

Dec 2025

Agenda Item: 9, Presentation
Meeting Date: December 17, 2025
Page 1 of 25

MTC/ABAG Plan Bay Area 2050+



**Delta
Stewardship
Council**

A CALIFORNIA STATE AGENCY

Acronyms

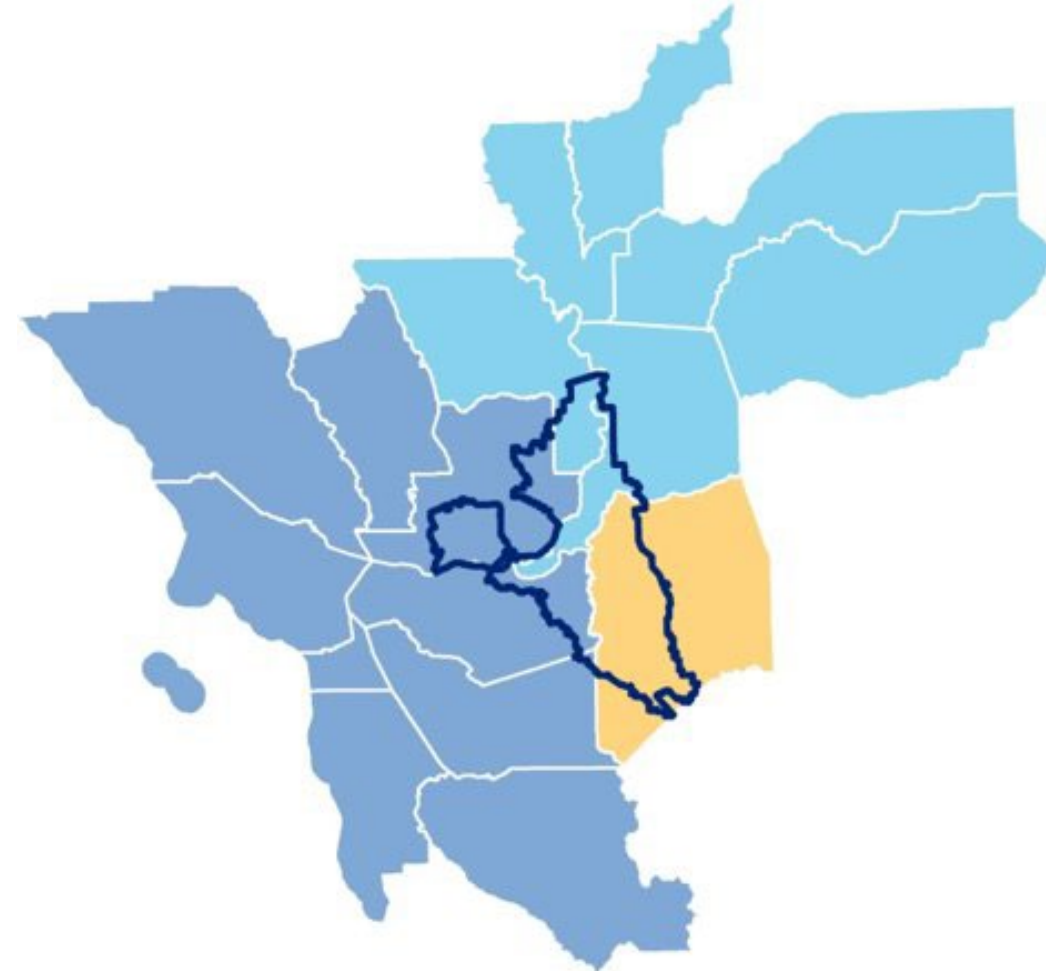
- **MTC** – Metropolitan Transportation Commission
- **ABAG** – Association of Bay Area Governments
- **MPO** – Metropolitan Planning Organization
- **MTP** – Metropolitan Transportation Plan
- **SCS** – Sustainable Communities Strategy
- **PCA** – Priority Conservation Area
- **PDA** – Priority Development Area
- **EIR** – Environmental Impact Report

Overview

- Review Council authority on regional plans and land use
- Describe Plan Bay Area 2050+ and its relationship to the Delta
- MTC's presentation: Plan Bay Area 2050+
- Review Council staff's findings / draft comment letter
- Discussion and Council action

Metropolitan Transportation Commission(MTC)

- MTC is a Metropolitan Planning Organization (MPO)
 - Designated by Federal Transit Administration to receive and distribute transportation funding
 - Prepares and maintains a Metropolitan Transportation Plan/Sustainable Communities Strategy (MTP/SCS)
- Strategy links land use, air quality, and transportation to achieve regional GHG emission reduction targets
- Other MPOs in the Delta
 - San Joaquin Council of Governments
 - Sacramento Area Council of Governments
- SCS are updated every 4 years



Council's Regional Planning Authority

Delta Reform Act (Wat. Code § 85212)

- Consistency of regional planning documents with Delta Plan
- Council's input to include but not limited to:
 - Consistency with Delta ecosystem restoration needs
 - Sufficiency of lands set aside for natural resource protection to meet ecosystem needs

Council's Regional Planning Authority

Delta Reform Act (Wat. Code § 85212)

- Requires MPOs preparing an RTP/SCS within primary and secondary zone of the Delta to consult regarding issues and policy choices related to Council's advice

Coordination Meeting

- October 19, 2023

Why This Matters

- Covered Actions exemption in secondary zone
- Transportation and land use authority
- Coordination and data sharing with MTC and Council





Draft Plan Bay Area 2050+: Overview

Delta Stewardship Council
December 18, 2025



Metropolitan Transportation Commission (MTC)

Federally-designated metropolitan planning organization (MPO) and State-designated regional transportation planning agency (RTPA)

Chair: Sue Noack, Pleasant Hill

Vice Chair: Stephanie Moulton-Peters, Marin County

Related Entities: BAHFA, BAIFA, BATA, SAFE



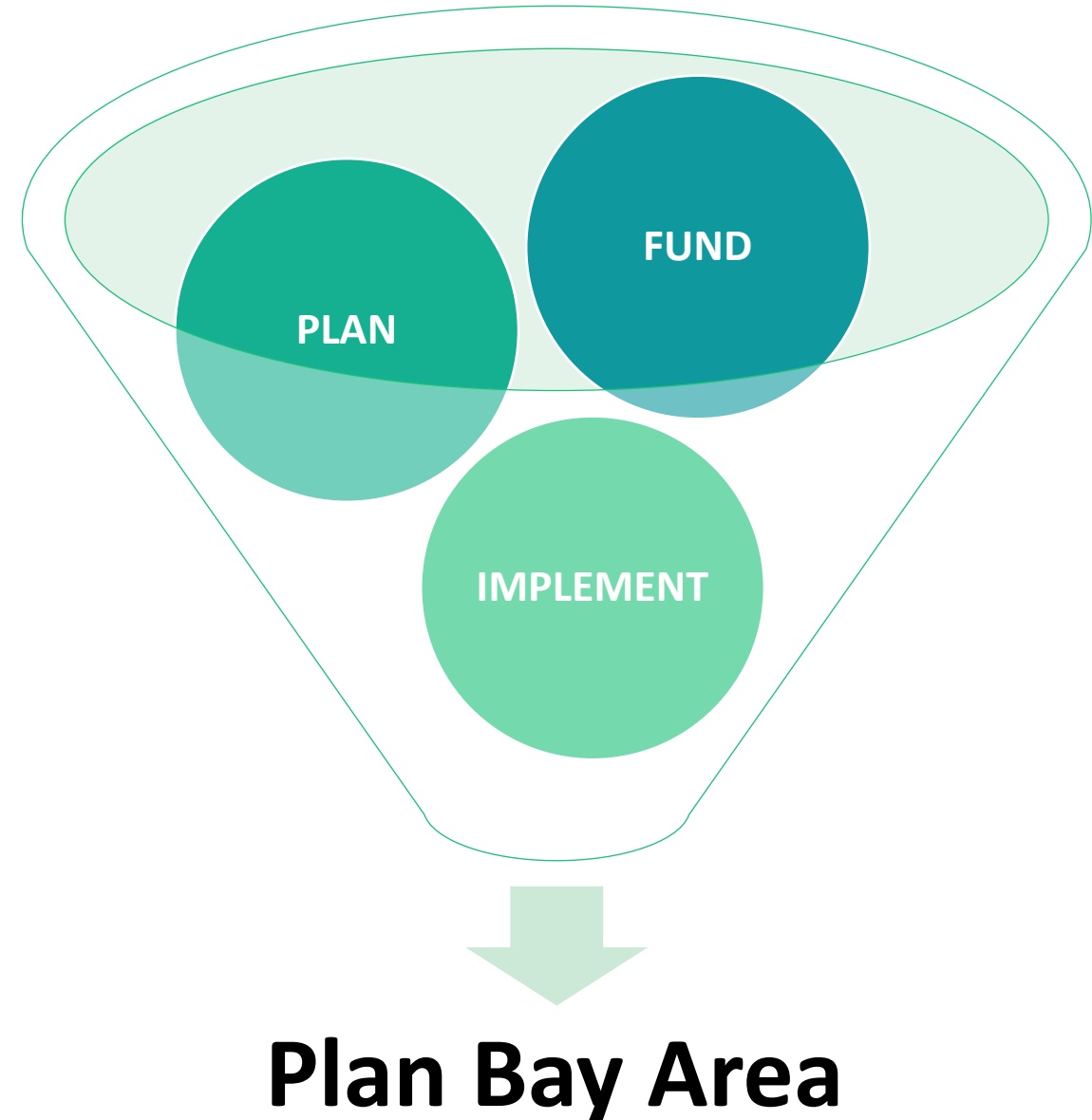
Association of Bay Area Governments (ABAG)

Member-supported council of governments (COG) with statutory responsibilities related to housing and land use, as well as additional environmental programs

President: Belia Ramos, Napa County

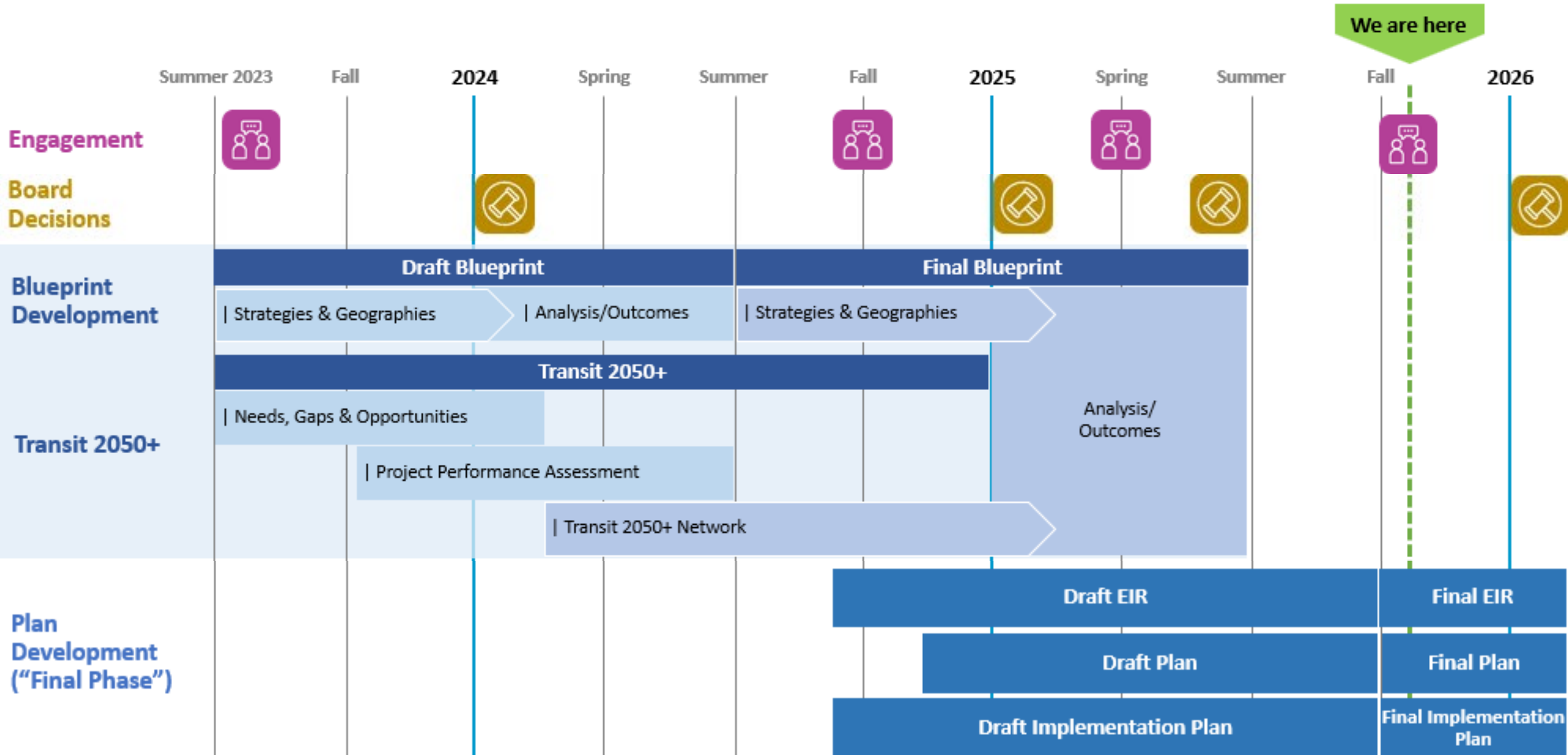
Vice President: Carlos Romero, East Palo Alto

Related Entities: BAHFA, SFEP



Plan Bay Area 2050+: Schedule

Agenda Item: 9, Presentation
Meeting Date: December 17, 2025
Page 10 of 25



* Dates are tentative and subject to change

Long-Range Planning: Federal and State Requirements

	Regional Coordination and Timing	Coordinate long-range transportation, housing and land use for the region every four years.
	Community Engagement	Include a robust, collaborative community engagement process.
	Transportation	Produce fiscally constrained Transportation Project List and identify transportation network to service regional needs.
	Housing	Accommodate future growth at all income levels.
	Environment	Meet per capita greenhouse gas reduction target and achieve air quality goals under the Clean Air Act.

Plan Bay Area does not:

- Override local land use authority
- Allocate money to projects or strategies
- Impose mandates
- Propose specific legislation

Long-Range Planning: From Plans to Reality

Since the adoption of Senate Bill 375 (2008), the region has made notable progress toward long-range planning priorities – increasingly building new homes near high-quality transit in locally-nominated Priority Development Areas (PDAs) while delivering a suite of projects that advance sustainability, mobility and environmental goals.

A Trend Toward Focused Growth

58% New Bay Area homes in PDAs, 2010-2020¹

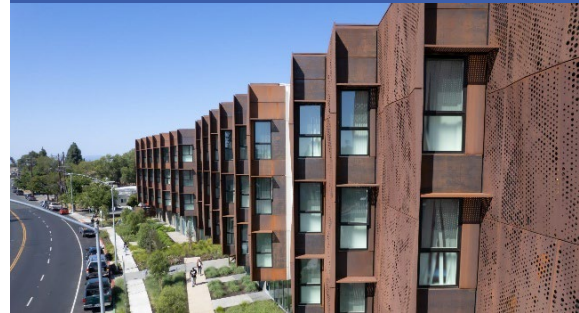
66% New Bay Area homes in PDAs, 2018-2023¹

¹. California Department of Housing & Community Development, ABAG-MTC

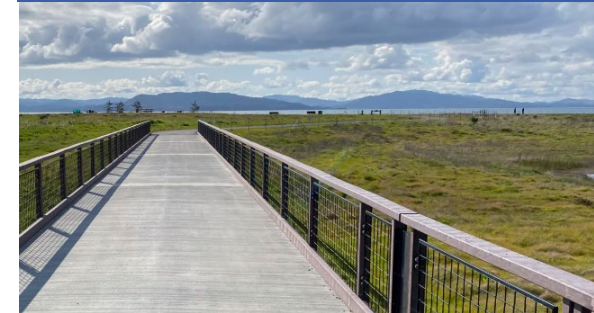
BART East Contra Costa County Extension



Vallejo Central Corridor West PDA



Dotson Family Marsh Restoration & Public Access



Plan Bay Area 2050+: Vision, Elements, and Themes

Vision

Ensure by the year 2050 that the Bay Area is *affordable, connected, diverse, healthy* and *vibrant for all*.

Elements



Themes

Plan Bay Area 2050+

35 Strategies Organized Into
11 Themes



Maintain and Optimize the Existing System



Create Healthy and Safe Streets



Build a Next-Generation Transit Network



Protect and Preserve Affordable Housing



Spur Housing Production at All Income Levels



Create Inclusive Communities



Improve Economic Mobility



Shift the Location of Jobs



Reduce Risks from Hazards



Expand Access to Parks and Open Space



Reduce Climate Emissions



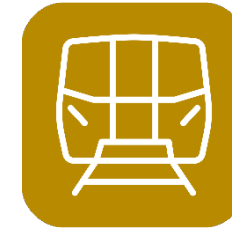
Navigating Post-Pandemic Realities

- Tackled **remote work's** impact on travel behavior
- Responded to **transit ridership** declines
- Addressed **rising office vacancies** and land use shifts



Planning Amid Financial Constraints

- Adjusted to an **\$80 billion reduction** in anticipated transportation revenues
- Recalibrated housing strategies to drive a **20+% reduction** in per-unit affordable housing construction costs



Reimagining Transit

- Launched **Transit 2050+** with a **collaborative co-management** model
- Prioritized **safety, frequency, and rider focused** improvements
- Advanced a more **unified regional transit network**



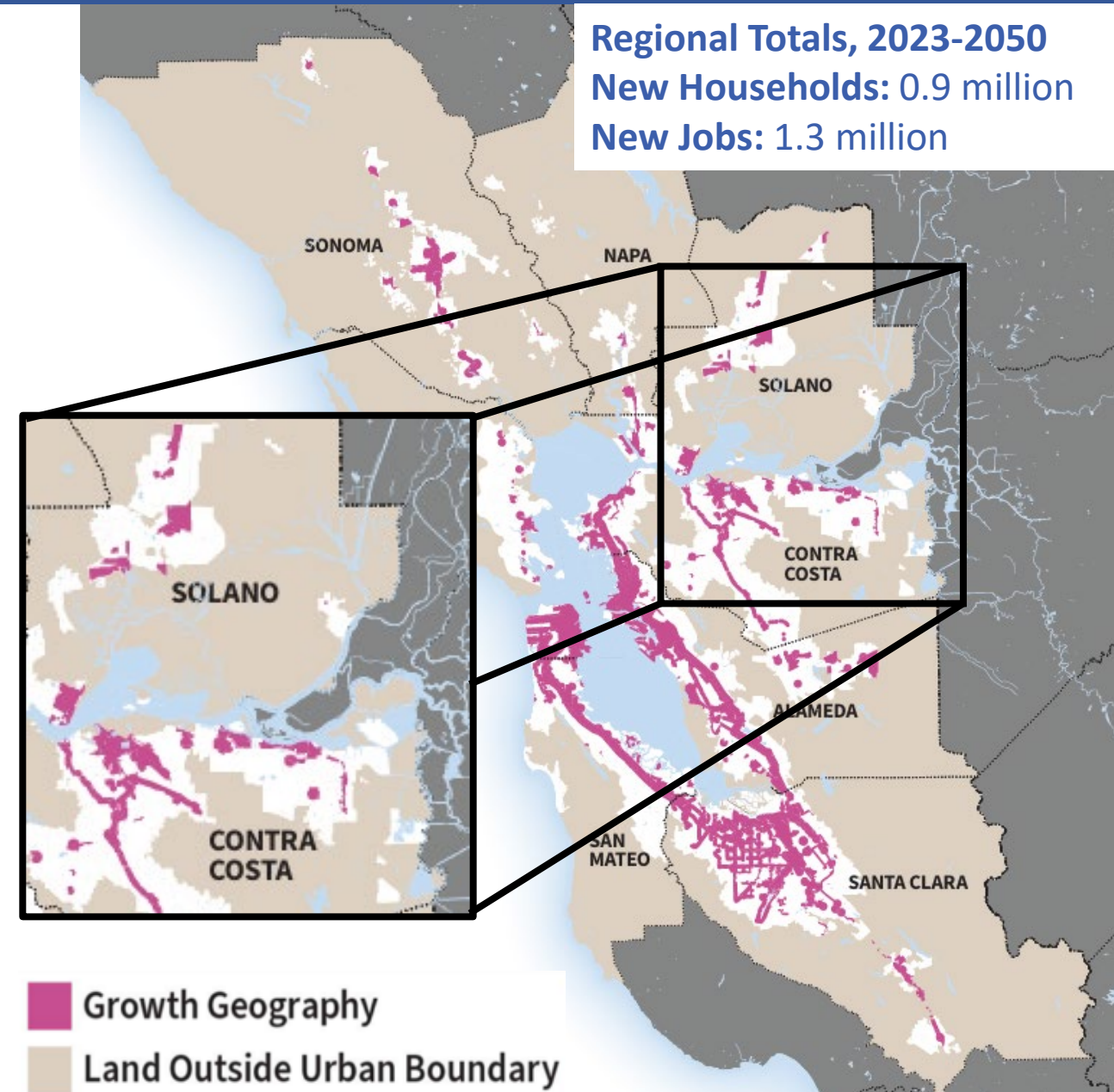
Elevating Resilience and Balancing Climate Goals

- Introduced the first-ever **Sea Level Rise Resilience Project List**, in collaboration with BCDC
- Implemented cost-effective solutions to achieve the plan's **aggressive, statutorily-required climate target**

Draft Plan: Growth Geographies

Agenda Item: 9, Presentation
Meeting Date: December 17, 2025
Page 15 of 25

- **95%** of the region's new households
- **72%** of the region's new jobs



Draft Plan: Select Strategies

Agenda Item: 9, Presentation
Meeting Date: December 17, 2025
Page 16 of 25

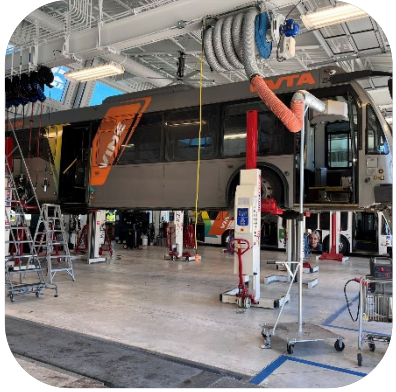


Photo: Britt Tanner

Strategy T1: Operate and Maintain the Existing System



Photo: Joey Kotfica

Strategy EN1: Adapt To Sea Level Rise



Photo: Karl Nielsen

Strategy T11: Enhance Transit Frequency, Capacity and Reliability



Photo: Joey Kotfica

Strategy EN5: Protect and Manage High-Value Conservation Lands



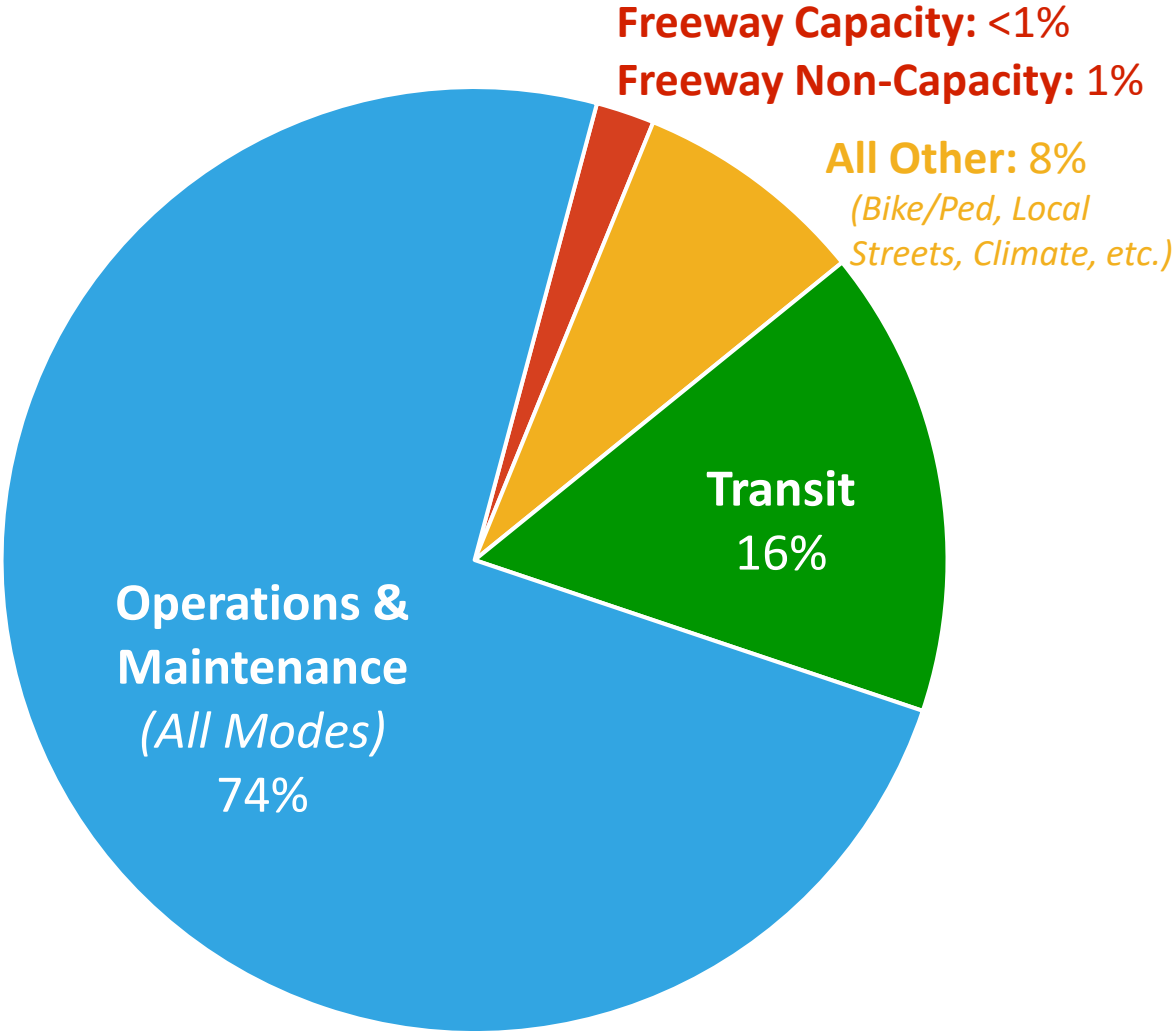
Photo: Karl Nielsen

Strategies H3 & EC4: Allow a Greater Mix of Housing & Land Use Densities & Types in Growth Geographies



Photo: Noah Berger

Strategy EN8: Expand Clean Vehicle Initiatives



**I-80/I-680/SR-12
Interchange Improvements**



**Soltrans Express Bus
Expansion**



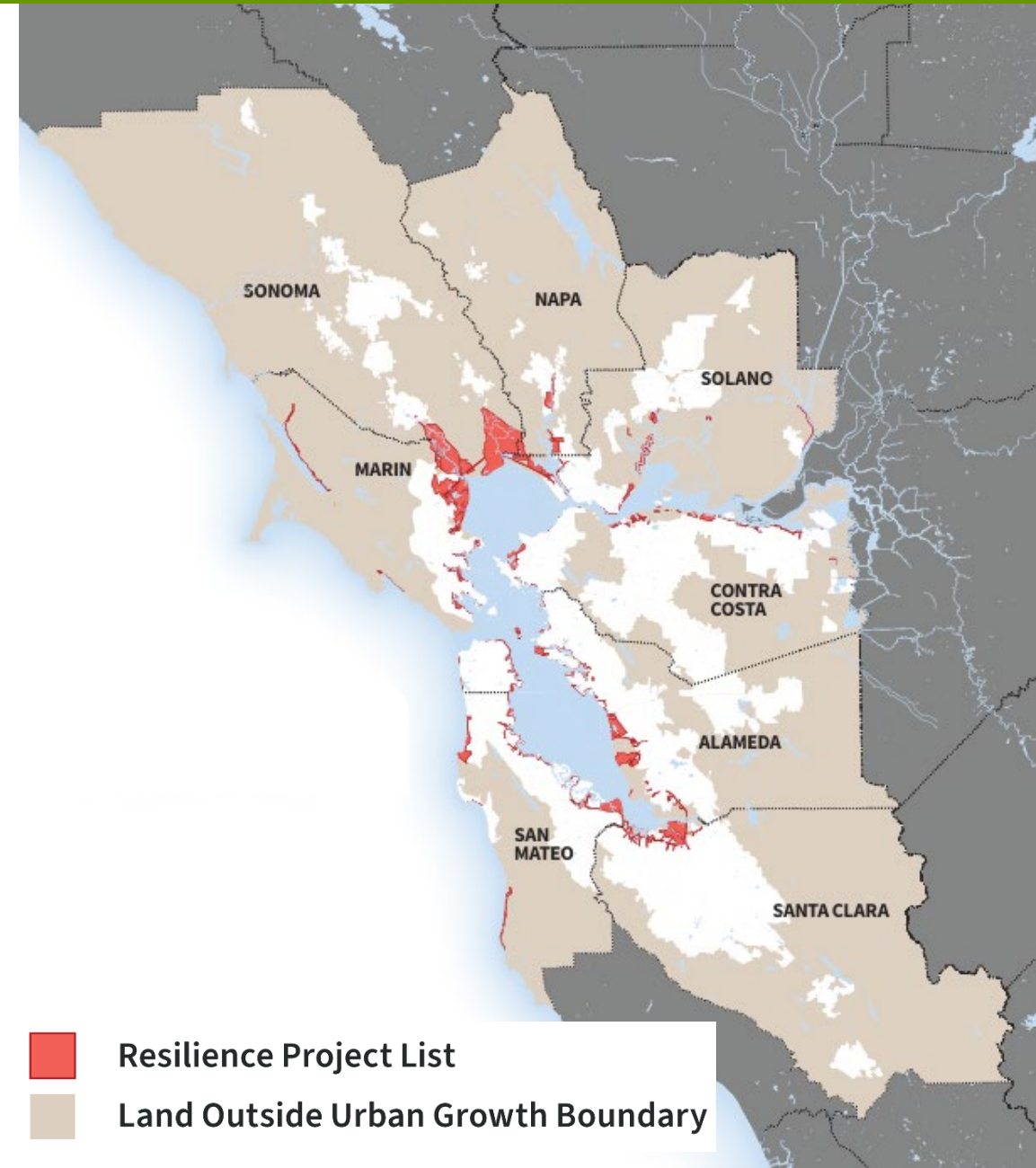
**I-680 Express Lanes
and Express Bus**



**Antioch-Brentwood
Bus Rapid Transit**

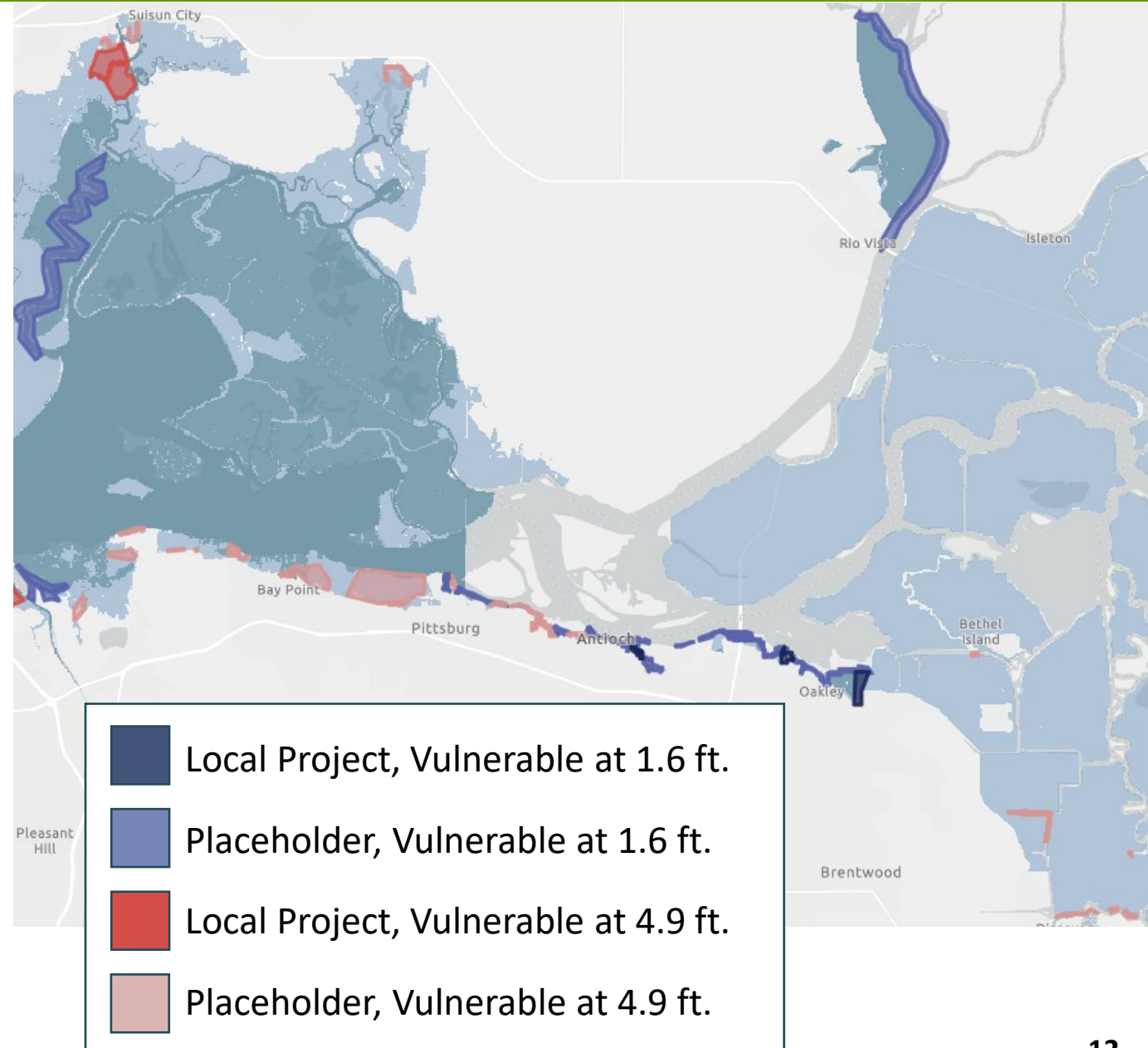


- Plan Bay Area 2050+ integrates a first-ever, fiscally-unconstrained list of sea level rise adaptation projects (Resilience Project List) within Strategy EN1
- The list includes 108 locally developed projects and 285 “placeholder” projects.





- Examples of existing local projects:
 - Big Break Regional Shoreline and Marsh Creek along Oakley shoreline.
 - Peytonia Slough near Suisun City.
- Examples of areas where additional adaptation planning and project specifics are needed:
 - Shoreline segments along Antioch, Oakley and Suisun City.



Performance and Equity: Key Outcomes by the Year 2050



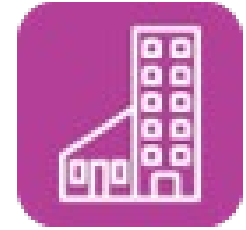
-25% housing and transportation cost burden for all households



+45% share of households near frequent transit



+40% jobs accessible via transit, biking or walking



+30% homeownership rate for low-income households



+110% share of people commuting via transit, biking or walking



+25% publicly accessible open space acres per capita



-21% per capita reduction in greenhouse gas emissions from light-duty cars and trucks



+60% per capita Gross Regional Product



Photo Credit: Karl Nielsen

FUND & ADVOCATE

- ❑ Pilot methods to accelerate conservation and transportation project delivery. Explore possible program benefits of a mitigation credit agreement.
- ❑ Defend climate action and adaptation policies and existing funding programs.



Photo Credit: Noah Berger

PLAN & COORDINATE

- ❑ Leverage findings from the Sea Level Rise Adaptation Funding and Investment Strategy to inform how sea level rise is addressed in Plan Bay Area 2060.
- ❑ Analyze the intersection of climate and natural hazards with existing and future land uses. Engage with state, local and regional agencies.



Photo Credit: Mark Jones

DELIVER & ASSIST

- ❑ Increase the portfolio of SFEP and MTC involvement in multi-benefit project delivery, similar to the current role on SR-37 and the Palo Alto Horizontal Levee project.
- ❑ Coordinate with partners to deliver streamlined and unified sea level rise technical assistance.

Next Steps

Fall 2025:

- Complete final round of engagement on draft plan; public comment deadline is 5pm Thursday, December 18th

Early Winter 2026:

- Request that MTC-ABAG policymakers adopt the Final Plan Bay Area 2050+, including Final Plan, Final EIR, and Final Implementation Plan

Mid 2026:

- MTC-ABAG intend to kick-off Plan Bay Area 2060, a major plan update that will include both “blue sky” and scenario planning for the region

For questions or comments, please reach out to: info@planbayarea.org

Consistency with the Delta Plan

- Determined using policies that tie to scope of Council's advice
 - ER P3 Protect Opportunities to Restore Habitat
 - DP P1 – Locate New Development Wisely
- Supported by Delta Plan recommendations
 - DP R5 – Roads and Highways
 - DP R11 – Recreational Opportunities

Delta Plan Policies
WR P1 - Reduce Reliance
WR P2 - Transparency in Water Contracting
ER P1 - Delta Flow Objectives
ER PA – Disclose Contributions to Restoring Ecosystem Function and Providing Social Benefits
ER P2 - Restore Habitats at Appropriate Elevations
ER P3 – Protect Opportunities to Restore Habitat
ER P4 – Expand Floodplains and Riparian Habitat in Levee Projects
ER P5 - Avoid Invasive Nonnative Species
DP P1 – Locate New Urban Development Wisely
DP P2 - Respect Local Land Use
RR P1 - Prioritization of Levee Investments
RR P2 – Require Flood Protection in Residential and Rural Areas
RR P3 – Protect Floodplain
RR P4 – Floodplain Protection
G P1(b)(1) – Coequal Goals
G P1(b)(2) – Mitigation Measures
G P1(b)(3) – Best Available Science
G P1(b)(4) – Adaptive Management

Staff Recommendation

- Staff recommends that Council find that the Plan Bay Area 2050+ is not inconsistent with the Delta Plan
- Staff recommends that Council approve resolution to submit the Plan Bay Area 2050+ and Draft EIR Comment Letter

Thank you

Connect with us!



Subscribe to
receive our email
announcements
by scanning the
QR code



Deltacouncil.ca.gov



@DeltaCouncil



@deltastewardshipcouncil



Delta Stewardship Council



@deltastewardshipcouncil