

Delta Watermaster Periodic Report to the Delta Stewardship Council

Jay Ziegler – Delta Watermaster
August 28th, 2025



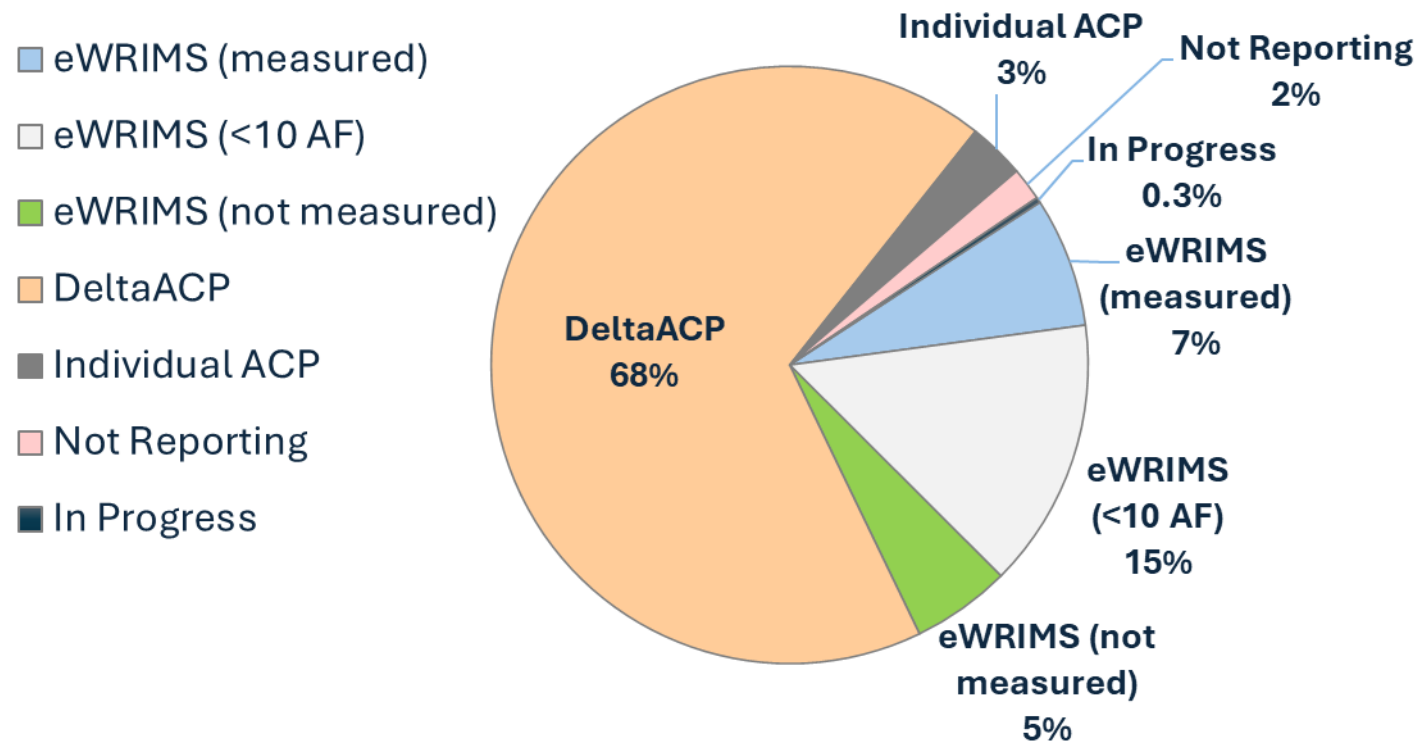
Office of the Delta Watermaster

August 2025 Delta Issues Summary

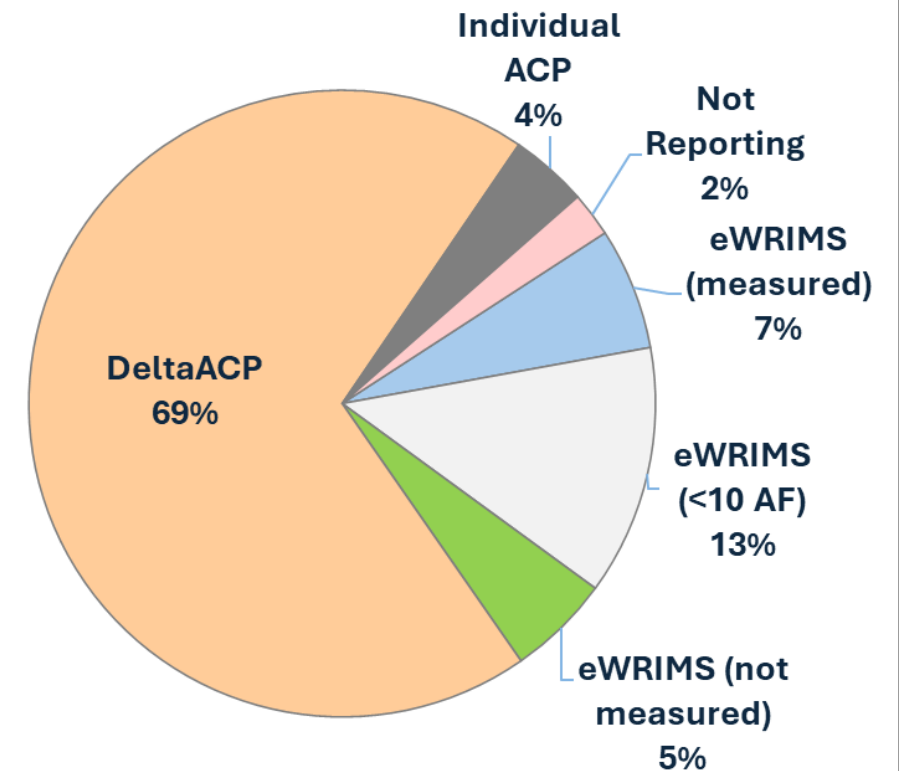
- **Water Reporting Update** – 98% Compliance for Water Year 2024
- **CalWATRS** – Reporting Database Transition
- **Delta Measurement Experimental Consortium (DMEC)**
- **Update on Delta Issues** – Sediment Removal, Habitat Projects
- **Delta Science and Monitoring Continuity**
- **South Delta Water Levels**
- **Water Quality Control Plan Update**

Water Rights Reporting Summary

Water Year 2023 (98%)



Water Year 2024 (98%)



Future Reporting for WY 2025: Migration to CalWATRS

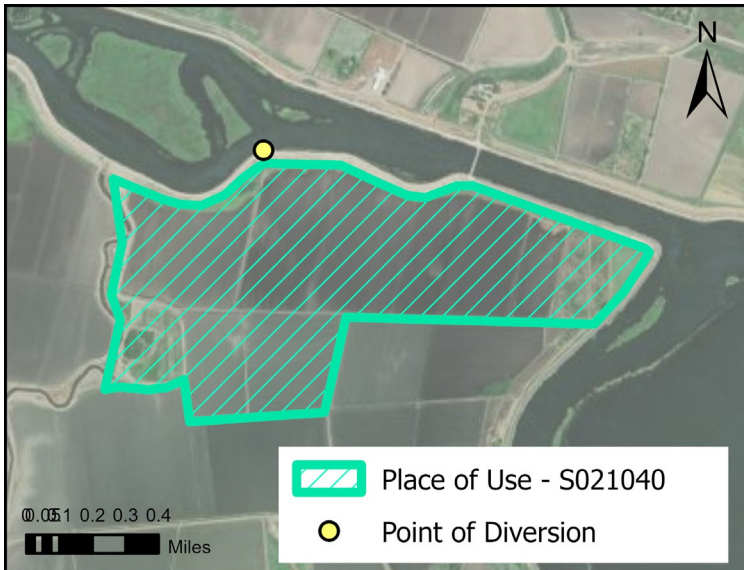
Legal Delta / Delta ACP filers

- ~2800 water rights in Legal Delta
- 69% filing with DeltaACP.com
 - +4% Individual ACPs w/OpenET
- ~125 DeltaACP agents to migrate to new CalWATRS system
- Places of Use delineated and aligned with Points of Diversion



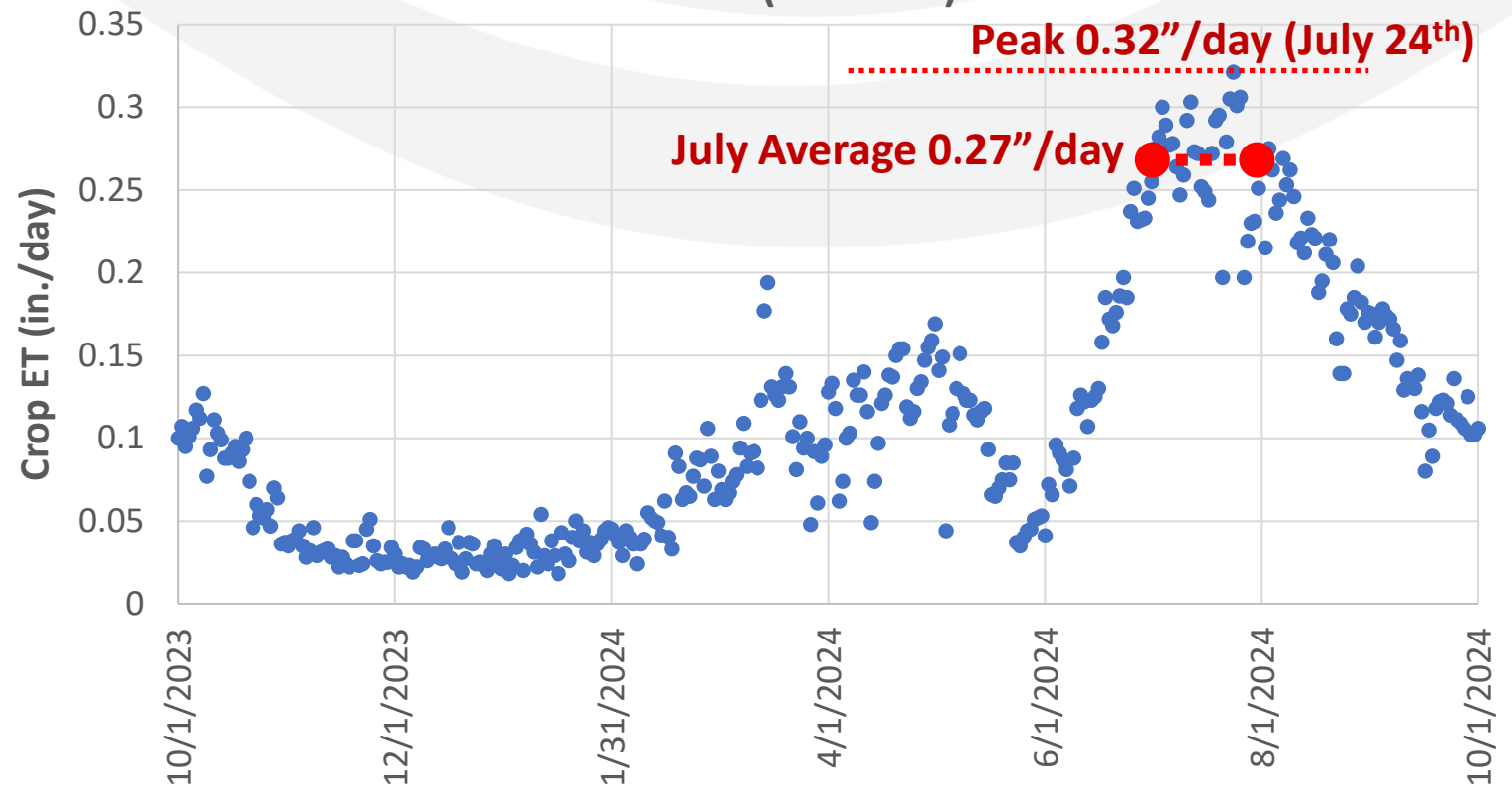
Example POU on Bacon Island (DeltaACP / CalWATRS)

Daily OpenET Crop Consumptive Use



Selected Place of Use
(306 acres)

WY2024 OpenET estimated Daily Consumptive Use on Bacon Island (S021040)



Delta Measurement Experimental Consortium (DMEC)

- Quarterly stakeholder group to assess methods to estimate Delta water use.
- Collaboration with OpenET org, UC-Cooperative Extension, Delta water agencies, local water users, consultants
- Pilot projects
 - Metropolitan WD of Southern CA – demonstration of measurement feasibility
 - The Nature Conservancy – measurement of tailwater drainage

South Delta Circulation & Channel Maintenance Update

Objectives:

- Engage Federal, State & Local Agencies
- Multi-Benefit Projects

Next Steps:

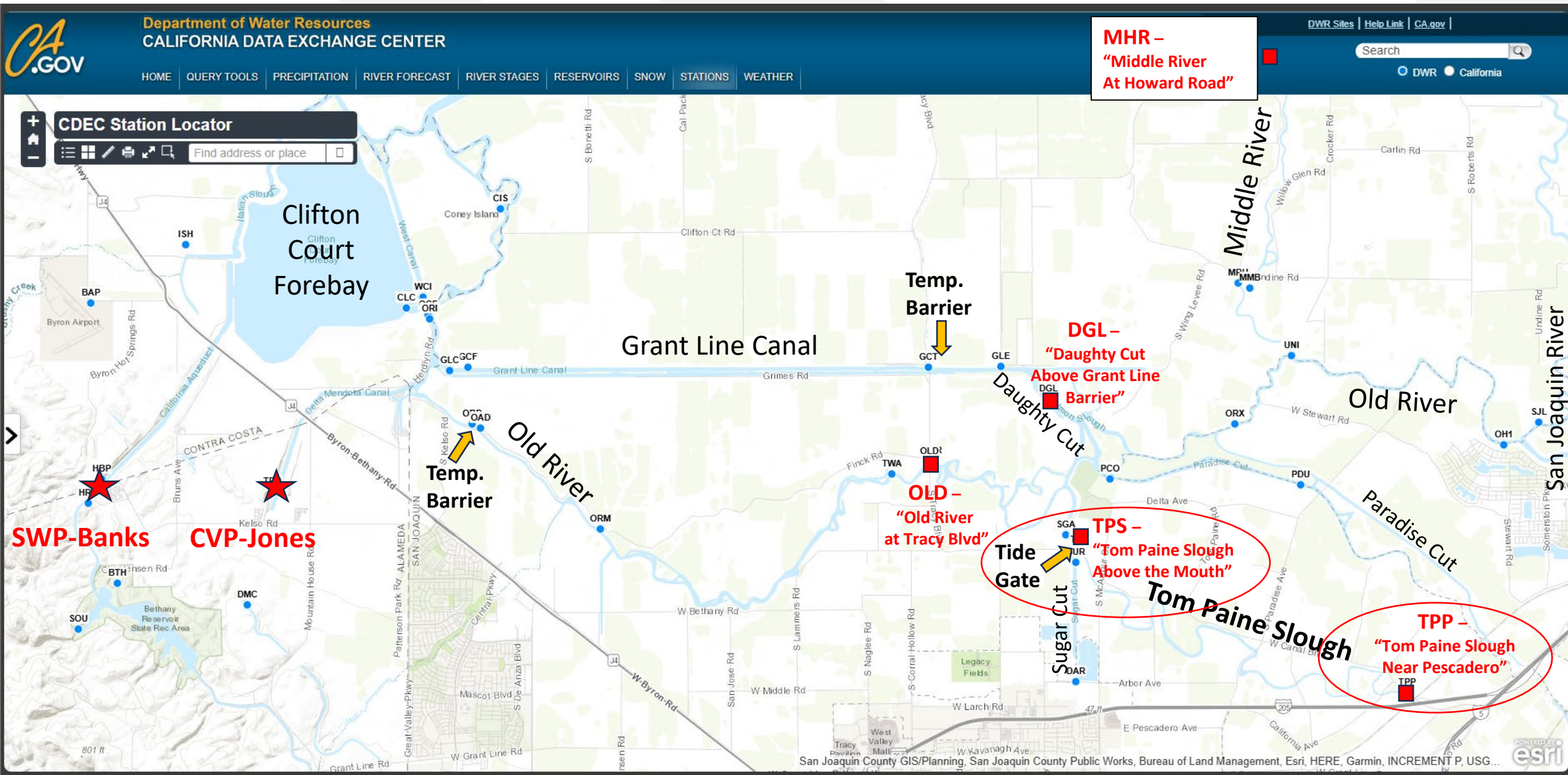
- Multi-Party MOU & Shared Work Program
- Paradise Cut Evaluation Study



FARMER-TO-FARMER
**GREAT VALLEY FARM
WATER PARTNERSHIP**

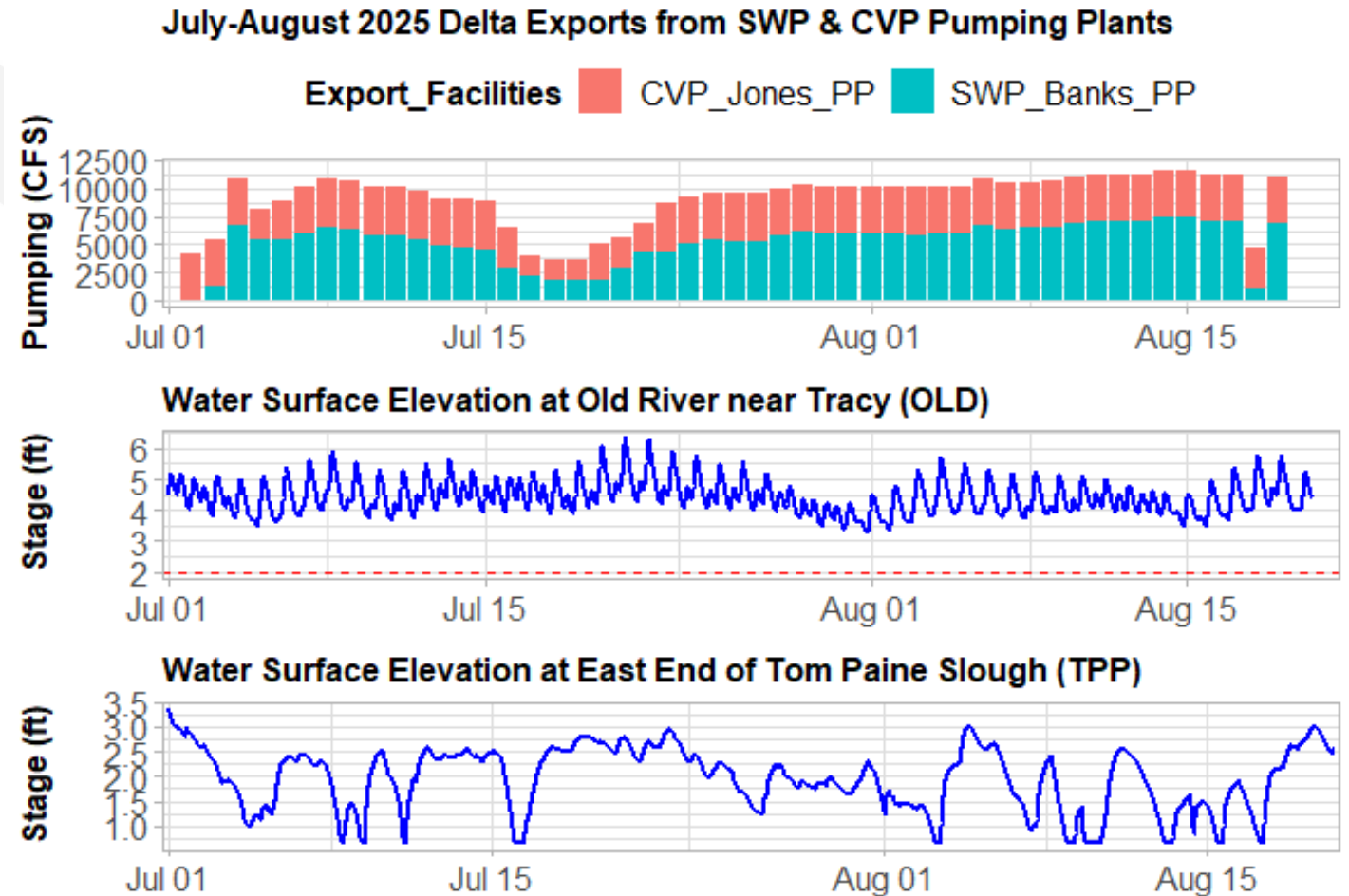


South Delta: Clifton Court to Tom Paine Slough



Project Exports and Tom Paine Slough Water Levels

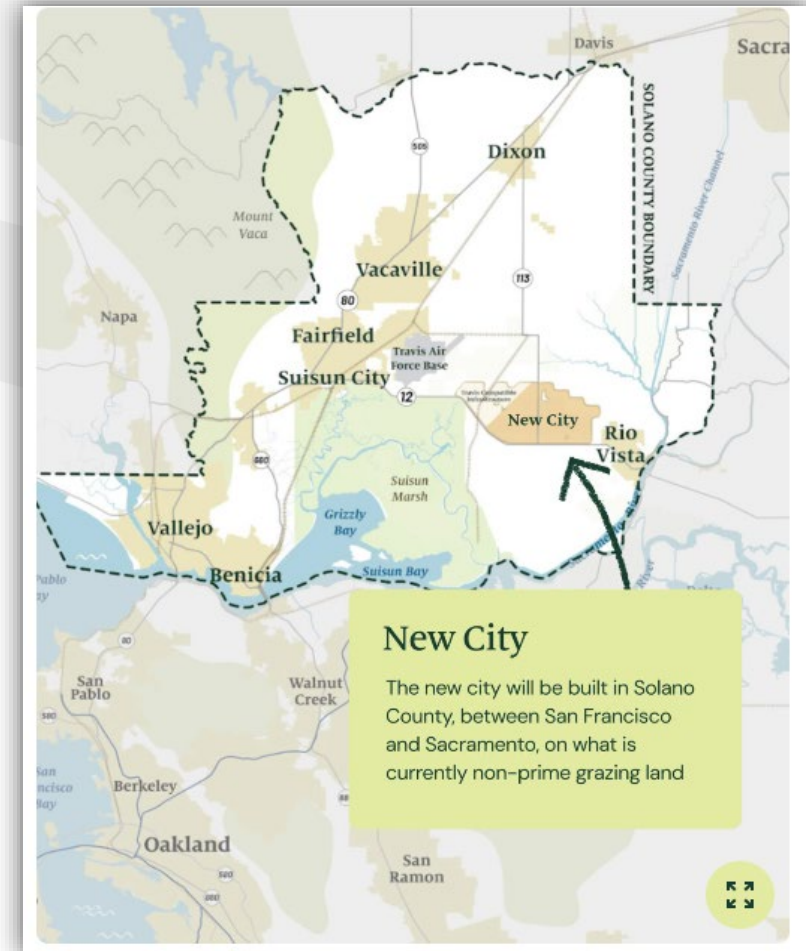
- Multiple factors impacting water levels and availability:
 - Lunar tidal cycle
 - Project diversions and operations
 - In-Delta diversions at seasonal peak
 - Sedimentation & Vegetation in Channels



Western Delta Water Supply Questions: California Forever

Agreement between CA Forever and Suisun City

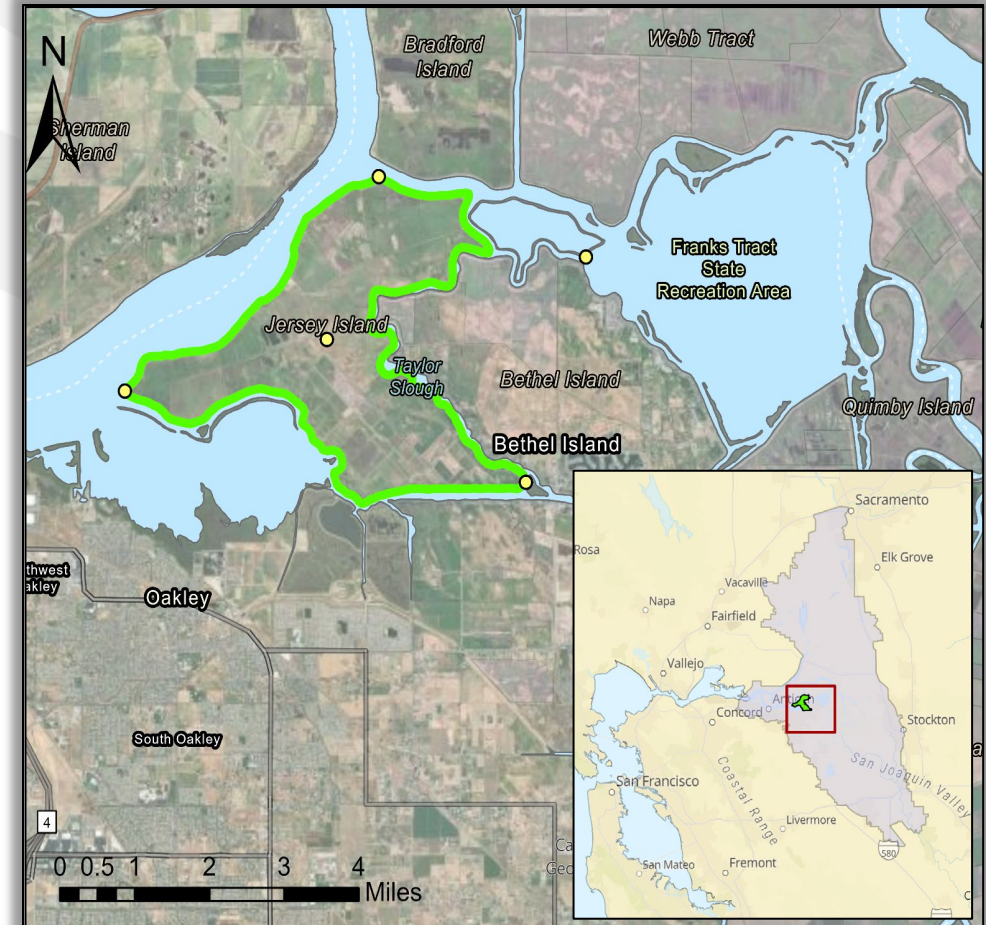
- Annexation of 15,737 acres into Suisun City
- Addition of up to 400,000 new residents
- Environmental Review Underway



Western Delta Water Supply Questions: Jersey Island

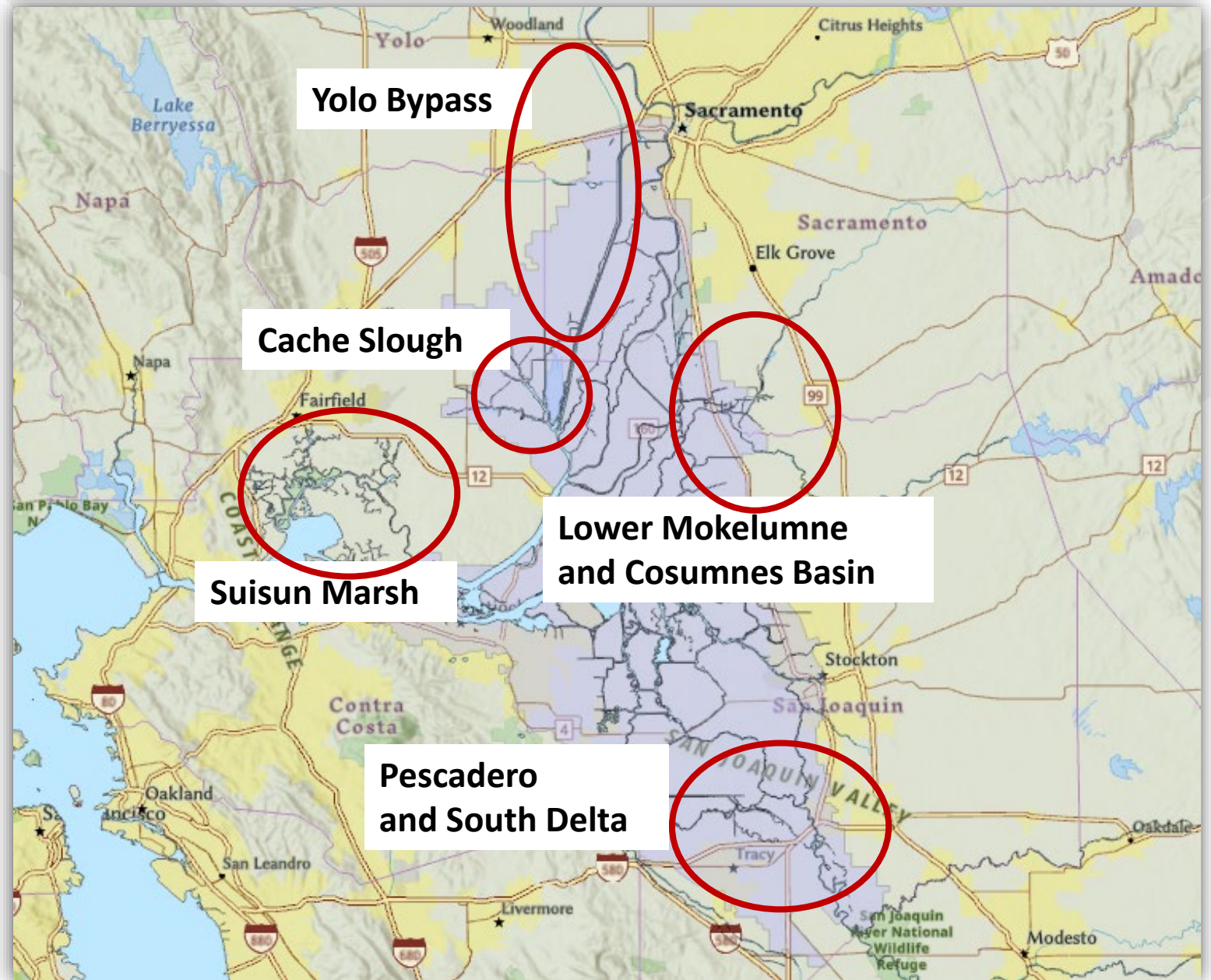
Jersey Island Proposed Acquisition by Diablo Water Agency

- Pending Proposals for State Grant Funding
- Stated Objectives:
 - Wetland Restoration
 - Sustainable Agriculture
 - Climate Resilience



Potential Multi-Benefit Project Areas

- Yolo Bypass
- Cache Slough
- Lower Mokelumne
- Suisun Marsh
- South Delta



Bay-Delta Plan: Next Steps



SWRCB will receive written comments by September 29, Public Hearing September 25-26.



Staff will review public comments to inform next steps on completion of the plan and next version of the staff report.



Board meeting to consider adoption of Sacramento/Delta updates to Bay-Delta Plan and final Staff Report.

Continuity in Delta Science & Monitoring

- Substantial Changes on Horizon. . .
 - USBR Contracting Out Delta Science and Monitoring Program
 - NOAA Oceanic and Atmospheric Research Office
 - DOI Office of Science Biological and Environmental Research
 - USFWS Monitoring Program Cuts

Thank you!

Jay Ziegler

Delta Watermaster

Jay.Ziegler@waterboards.ca.gov