



**Delta
Stewardship
Council**

A CALIFORNIA STATE AGENCY

Delta Adapts: Creating a Climate Resilient Future

INFORMATION SHEET | February 2024

The Delta Stewardship Council launched the *Delta Adapts* initiative in 2018 to improve resilience to climate change impacts in the Sacramento-San Joaquin Delta and Suisun Marsh by producing:

1. a climate change **Vulnerability Assessment**, approved in 2021, (rebrand.ly/dava24) that identifies risks posed by multiple hazards to Delta communities and a variety of regional assets, including agriculture, community facilities and services, water management and flood control infrastructure, parks and recreation, transportation, water supply, and ecosystems.
2. a regional **Adaptation Plan** that identifies a range of actions that would improve regional resilience to climate change, with a focus on human safety and wellbeing.

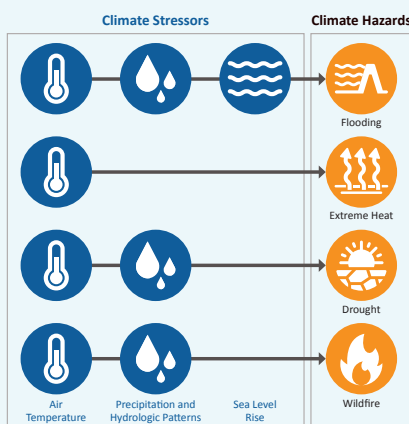
Background

California relies on the Delta. The Delta supplies a portion of the drinking water for 27 million Californians. It is also a biodiversity hotspot for more than 750 plant and animal species and home to nearly 600,000 people. **Changes in climate are already putting the Delta's—and the state's—water and food supply, public safety and utilities, biodiversity, agriculture, and economy and infrastructure at greater risk.**

Delta Adapts Goals

- » Provide information and recommend strategies for the Council and others to use
- » Integrate climate change into the state's prioritization of future Delta actions and investments
- » Serve as a framework to be built upon by the Council and others in years to come

What is the Vulnerability Assessment?



The Vulnerability Assessment examines these hazards:

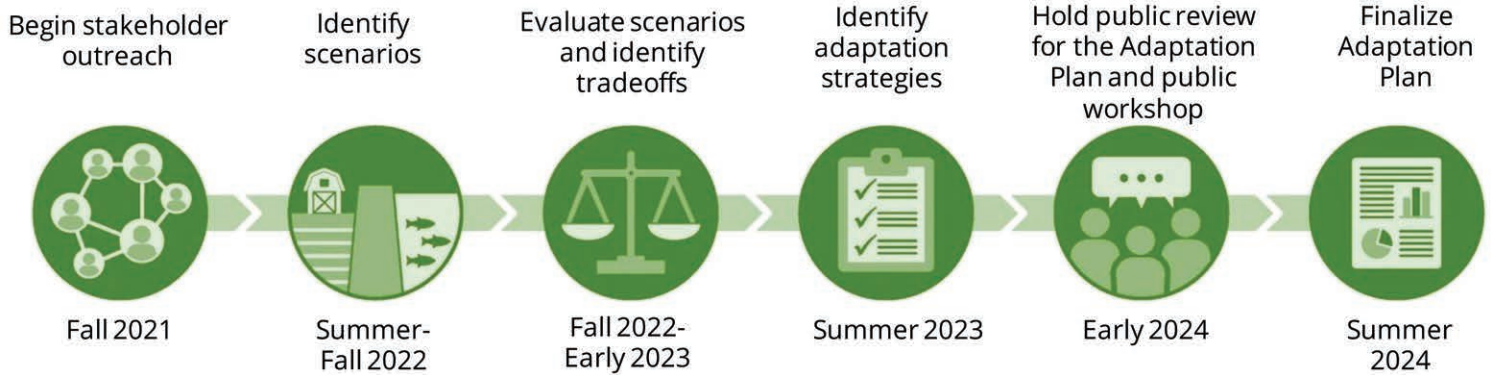
- » Flooding and sea level rise
- » Extreme heat
- » Drought
- » Wildfire smoke

Key takeaways:

- » Flooding will continue to get worse.
- » Climate change will not impact Delta residents equally.
- » Delta water exports will be less reliable in the future.

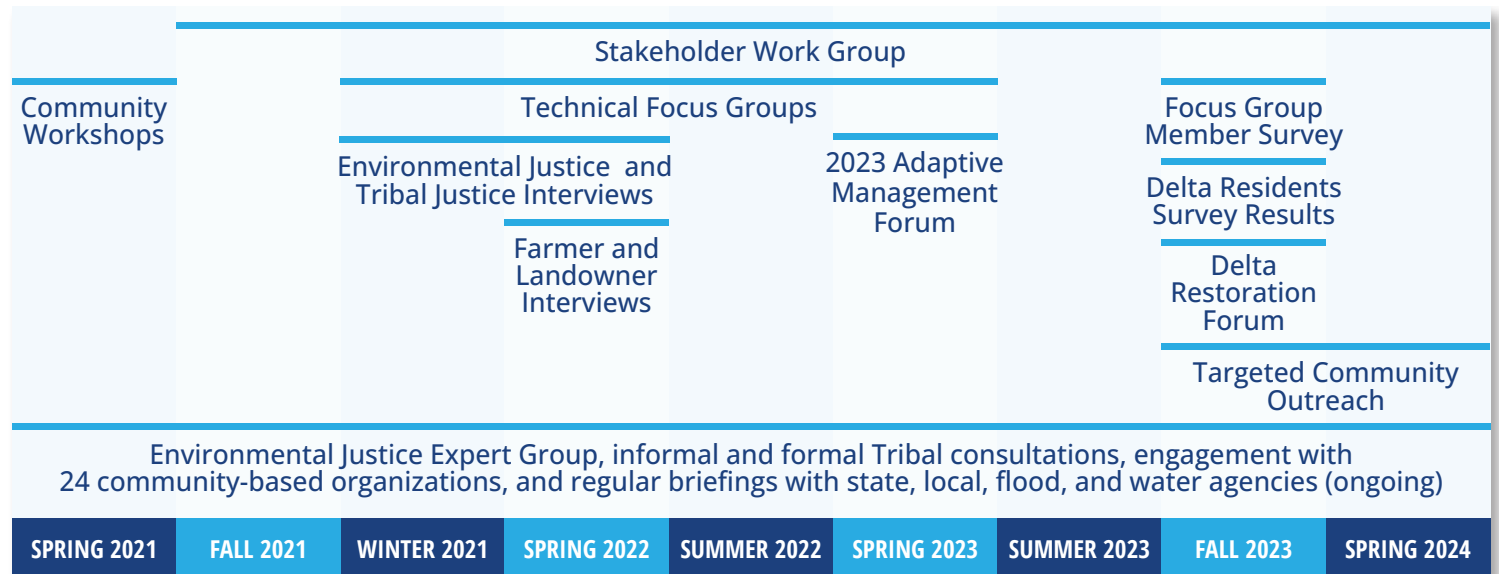
- » The existing water supply system does not provide enough storage to capture anticipated increases in runoff due to more variable precipitation.
- » In-Delta water uses may be threatened by water quality declines.
- » Delta ecosystems will continue to be stressed under climate change and have little room to migrate.
- » Agricultural production trends will shift with climate change.

Adaptation Plan Process and Timeline



Council staff is currently developing a public Draft Adaptation Plan, which will be released for a 60-day public comment period in spring 2024. The Adaptation Plan has been informed by a robust engagement process with a diverse array of interests, findings from the Vulnerability Assessment, and other literature and existing adaptation plans (see graphic below for more detail).

Partner Input



Learn More and Get Involved: To find out more about Delta Adapts, how you can help shape the Adaptation Plan, or for any questions, contact climatechange@deltacouncil.ca.gov or visit deltacouncil.ca.gov/delta-plan/climate-change. Subscribe to receive updates from the Delta Stewardship Council at rb.gy/kzlh4.