



# Demonstrating contributions to reduced reliance on the Delta and improved regional self-reliance

## November 2023

Katherine Marquez  
Program Manager III  
Delta Conveyance Office,  
Department of Water Resources

Jennifer Nevills  
Program Manager  
Bay-Delta Initiatives,  
Metropolitan Water District



# Presentation Agenda

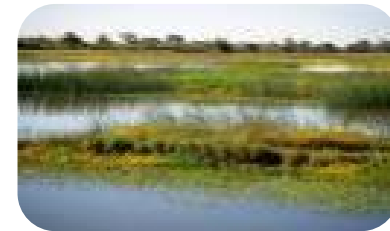
- Identifying a Need
- Developing a process
- Outreach
- Consolidating the data
- Conclusions and future use



# Delta Reform Act and the Delta Plan

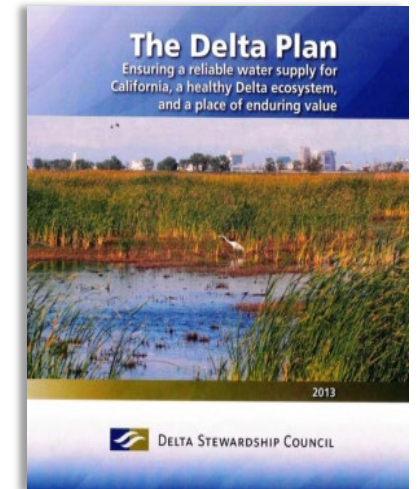
## The Delta Reform Act of 2009

- Coequal Goals
  - Reliable Water Supplies
  - Ecosystem Restoration



## The Delta Plan

- Further the coequal goals
- Protect Delta as an evolving place
- “Covered Actions” must be consistent





# Delta Plan Certification Process

## Covered Action

- State or local agency project
- In whole or in part in the Delta
- Significantly affects coequal goals or state flood control

## Certification of Consistency

- Submitted after CEQA review and agency approval of a proposed project but before implementation
- Detailed factual findings of consistency with applicable policies prepared by the agency approving the covered actions



# Delta Plan Reduced Reliance Policy WR P1

(Cal. Code Regs., tit. 23,  
§ 5003 )

## **Prohibits any covered action that would export water from, transfer water through, or use water in the Delta**

- Delta Conveyance Program
- Potentially multi-year cross-Delta water transfers

## **Unless the answer to at least one of the following is “no”**

- Has one or more water suppliers failed to adequately reduced reliance?
- Has the failure of one or more suppliers to reduce reliance significantly caused the need for the action?
- Will the export or use have a significant adverse impact in the Delta?



# Delta Plan Reduced Reliance Policy WR P1

(Cal. Code Regs., tit. 23,  
§ 5003 )

## Prohibits any covered action that would export water from, transfer water through, or use water in the Delta

- Delta Conveyance Program
- Potentially multi-year cross-Delta water transfers

## Unless the answer to at least one of the following is “no”

- Has one or more water suppliers failed to adequately reduced reliance?
- Has the failure of one or more suppliers to reduce reliance significantly caused the need for the action?
- Will the export or use have a significant adverse impact in the Delta?



# WR P1 subsection (c)(1)

## A supplier is contributing to reduced reliance on the Delta and improved regional self-reliance if it:

- (c)(1)(A) Has a DWR reviewed UWMP or AWMP
- (c)(1)(B) Documented implementation of locally cost effective and technically feasible programs and projects to reduce reliance on the Delta
- (c)(1)(C) Demonstrated a measurable reduction in Delta reliance within their UWMP or AWMP



# WR P1 subsection (c)(1)

## A supplier is contributing to reduced reliance on the Delta and improved regional self-reliance if they:

- (c)(1)(A) Have a DWR reviewed UWMP or AWMP?
- (c)(1)(B) Documented implementation of locally cost effective and technically feasible programs and projects to reduce reliance on the Delta?
- (c)(1)(C) Demonstrated a measurable reduction in Delta reliance within their UWMP or AWMP?





# Long-term Water Supply Planning

## What is an UWMP?

- Required by the Urban Water Management Planning Act
- Urban suppliers providing water for municipal purposes to more than 3,000 customers or serving more than 3,000 acre-feet annually
- Every five years demonstrating water supply capability in normal, single dry, and multiple dry water years
- DWR required to review and provide a report to the California Legislature



## What is an AWMP?

- Required by Water Conservation Act of 2009 (SB X7-7)
- Agricultural water suppliers serving more than 25,000 irrigated acres (excluding recycled water deliveries)
- Must include reports on the implementation status of specific Efficient Water Management Practices that were required under SB X7-7
- DWR required to review

Long-term  
Water  
Supply  
Planning



# Technical Approach Development & Coordination

## How can UWMPs and AWMPs be used to meet the data needs of a certification process?

- Plans provide data on past, current, and future water supplies, demands, and water use efficiency
- Required reporting may not be conducive to demonstrating reduced Delta reliance directly
  - Careful consideration of data is needed for each Supplier
- Goal was to create optional example approaches for Suppliers to demonstrate a measurable reduction in reliance on Delta water supplies
  - Separate UWMP and AWMP approaches



# Technical Approach Development & Coordination

## Technical Development Approach

- Collaborative development process with DWR, PWA's, and DSC staff
- DSC staff provided guidance on WR P1 policy language and interpretation
- DSC and DWR staff provided review of tables and draft guidance
- State Water Contractor agencies provided additional technical review and input



# Technical Approach Development & Coordination

**SEPTEMBER 2019**

**Coordination Meetings with DSC**

**AUGUST/SEPTEMBER 2020**

**Draft Guidebooks released and  
workshops**

**DECEMBER 2020**

**UWMP training on WR P1 calculations**

**DECEMBER 2020/ JANUARY 2021**

**DCP outreach letters to SWC suppliers**

**APRIL 2021/JULY 2021**

**2020 AWMPs due/UWMPs Due**



## 2020 UWMP Guidebook Appendix C

# Proposed UWMP Calculation Method

- 2015 UWMP reporting
- Setting a baseline
- Calculation of water use efficiency
- Calculation of regional self-reliance
- Calculation of reliance on Delta supplies
- Data considerations and documentation





## Proposed AWMP Calculation Method

### 2020 AWMP Guidebook Appendix C

- Available data
- Setting a baseline
- Implementation of Efficient Water Management Practices
- Change in delivery of Delta Water
  - Current conditions
  - Future water use including climate change

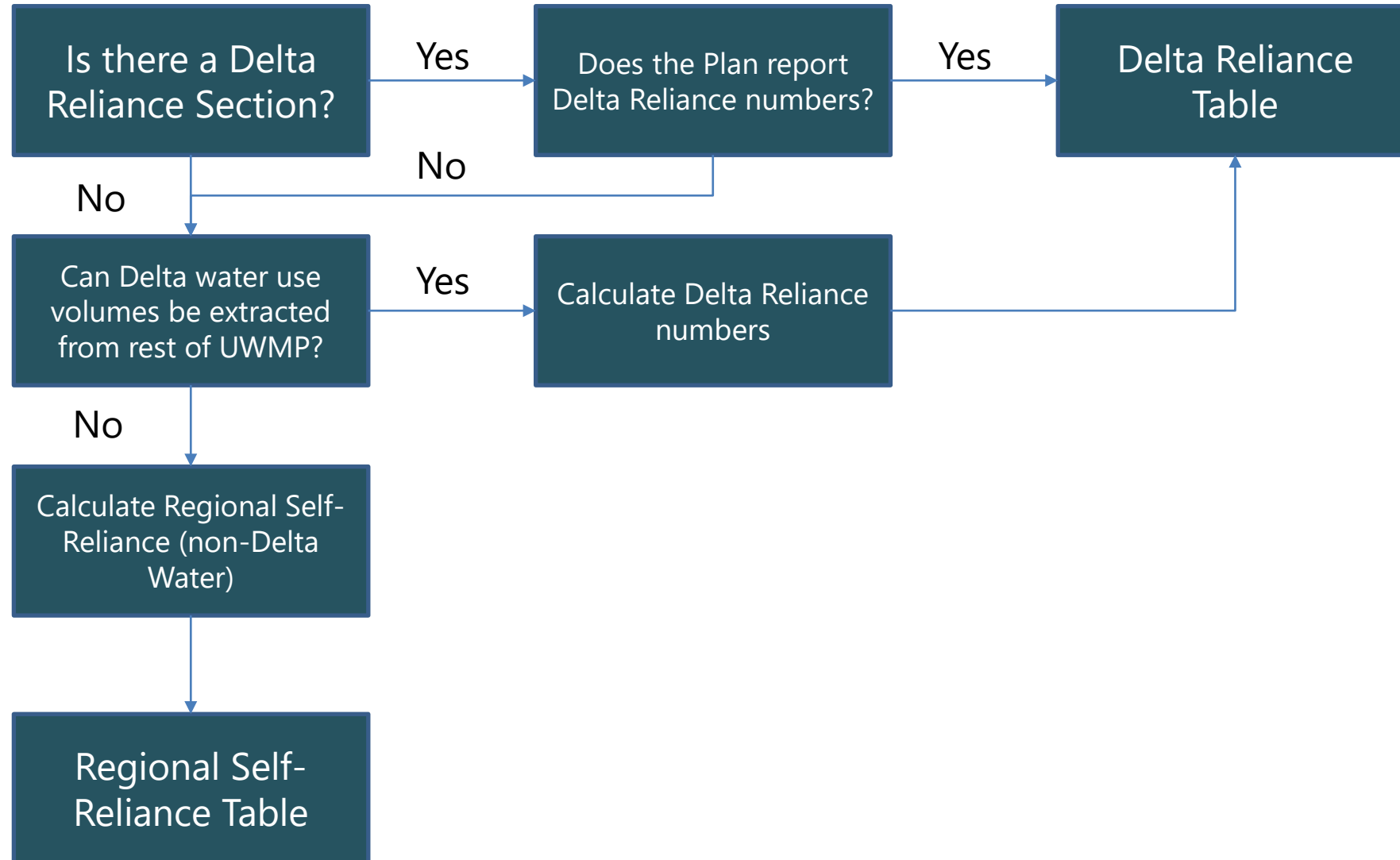


# Initial Review of UWMPs and AWMPs

- Quantification of reduced Delta Reliance
  - Reduction quantified as a volume and % of total demand
  - Documentation of water use efficiency and improved regional self-reliance
- Quantification of increased Regional Self Reliance
  - Quantification of water received through the Delta is infeasible
  - Increase in regional water quantified as a volume and % of total demand
- Documenting Efficient Water Management Practices from AWMPs



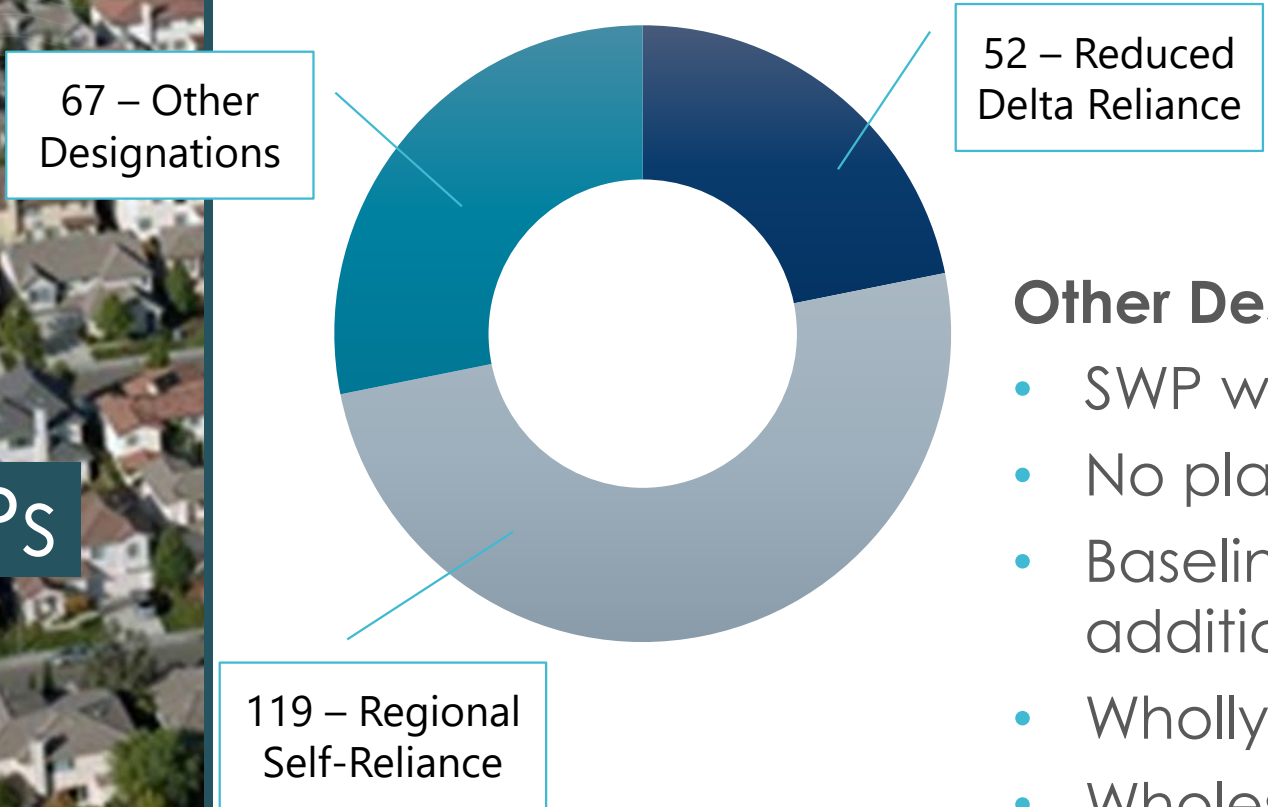
# Initial Review of UWMPs and AWMPs





238 UWMPs  
Assessed

## Designations for 238 UWMPs



### Other Designations Include:

- SWP water used for recharge
- No planned SWP use
- Baseline assumptions need additional review
- Wholly reliant on SWP
- Wholesaler without own demands
- Insufficient data in UWMP
- Doesn't demonstrate reduced delta reliance or increased regional self-reliance

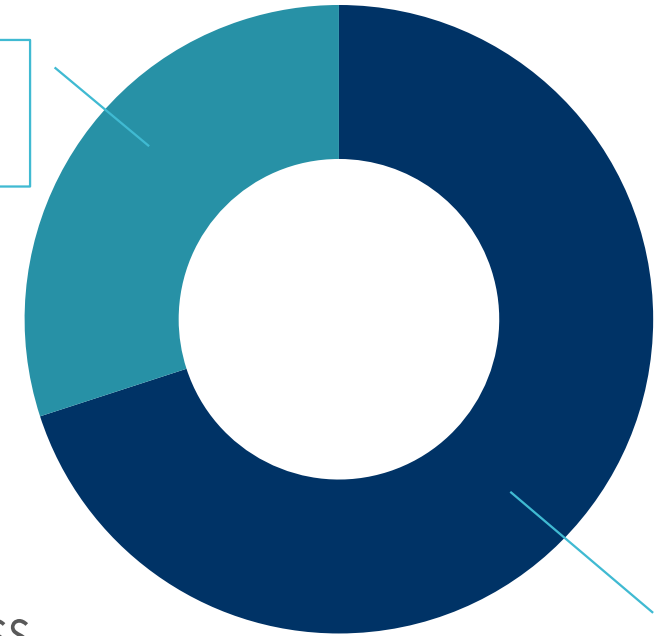


# 10 AWMPs Assessed

## Other Designations Include:

- Reduced SWP use from historical
- Expected future SWP use less than historical use
- Reduction in percentage of Delta supplies used for food crops and generation of revenue
- Production per unit of applied water increases

3 – Other Designations



7 – Reduced Delta Reliance



## Summary of Findings

- 225 UWMPs and 9 AWMPs demonstrate path to reducing reliance on Delta or increasing regional self-reliance
- Urban water use expected to drop from 2.3 MAF under baseline conditions to 1.95 MAF, a reduction of about 350 TAF or 15%
- Agricultural Water use expected to drop from 514 TAF under baseline conditions to:
  - 414 TAF under 2030 conditions, a 19% reduction
  - 374 TAF under 2070 conditions, a 27% reduction





## Conclusions

### Potential Future Uses of Assessment Data

- Helps answer one part of WR P1 - Has one or more water suppliers failed to adequately reduced reliance?
  - Produced and collected data that previously wasn't available in the format identified in the policy
- This information supports reporting for DSC performance measures
- Additionally, the data and techniques for analyzing the data are now available to support any future covered action



# Questions?