

AUG 2022

# Environmental Justice Issue Paper

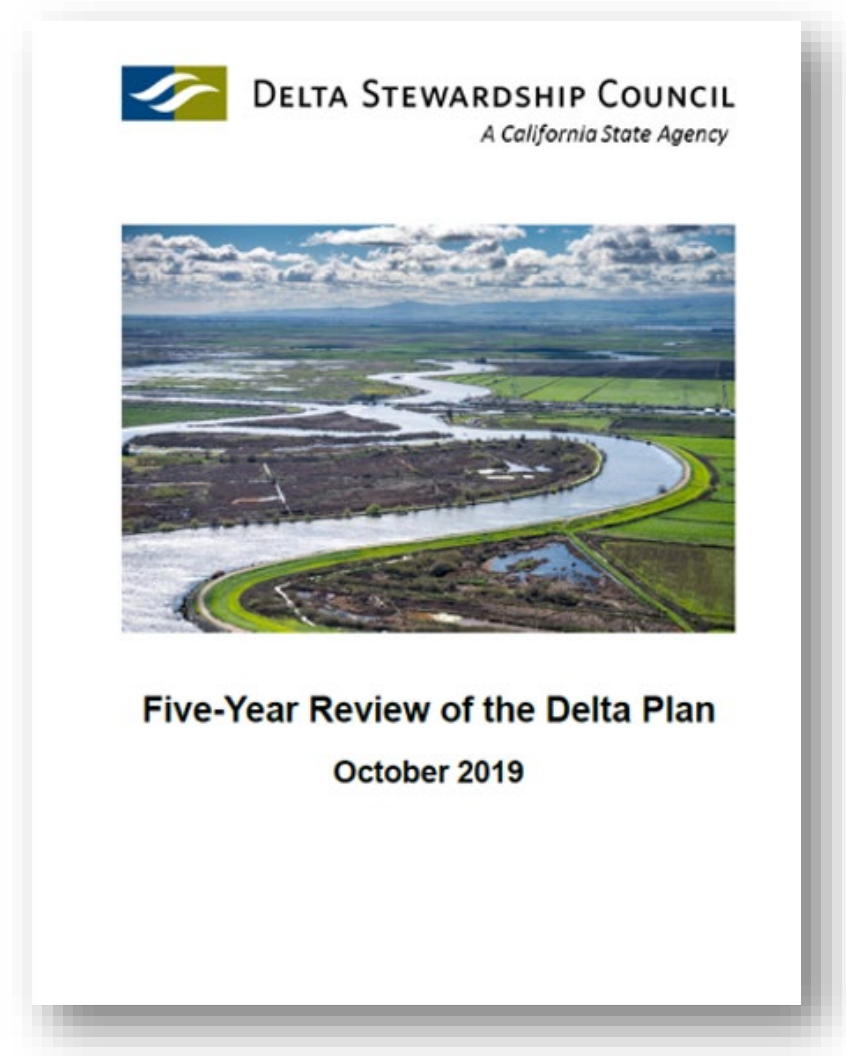


**Delta  
Stewardship  
Council**

A CALIFORNIA STATE AGENCY

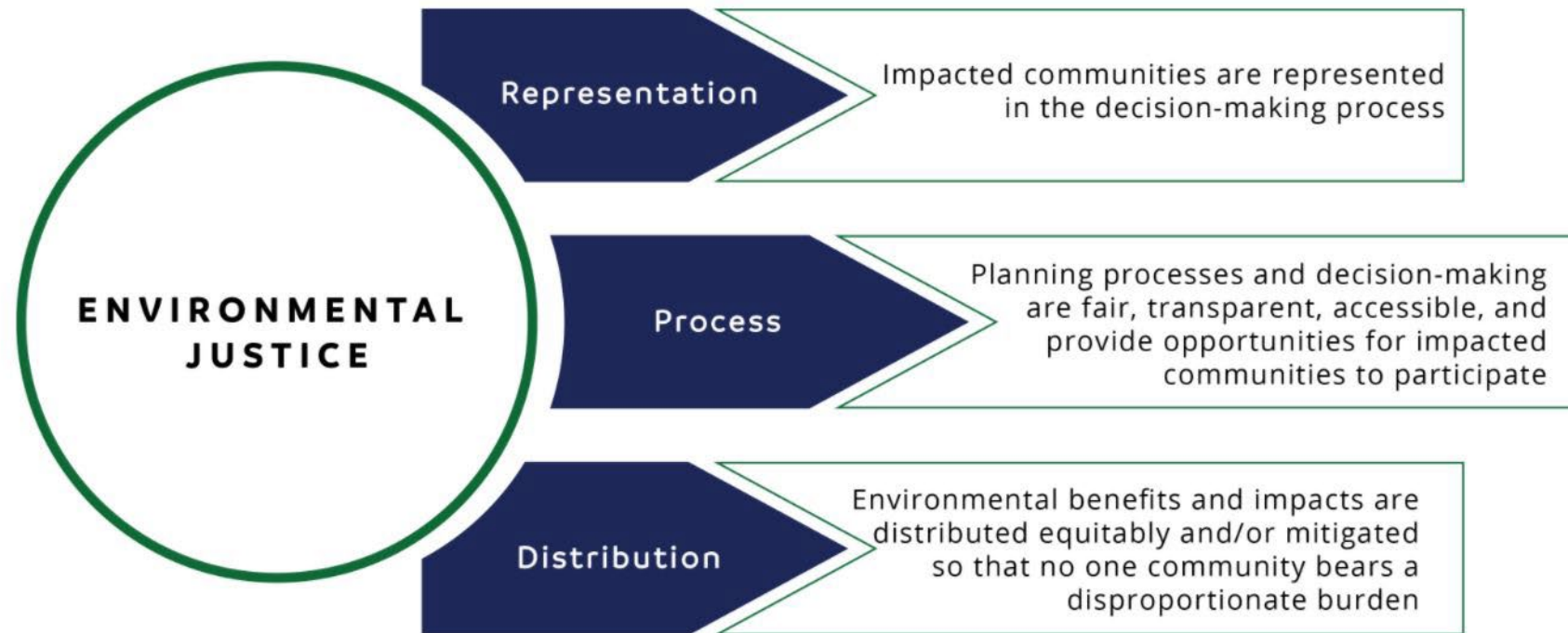
# Purpose

- The Council's 2019 **Five-Year Review** of the Delta Plan...
  - Identified EJ as a key emerging issue.
  - Recommended that staff **prepare an issue paper** "to investigate the potential need for additional strategies or responses within the Delta Plan to address disadvantaged communities and EJ."



# Environmental Justice (EJ)

- The fair treatment of people of all races, cultures, and incomes with respect to the development, adoption, implementation, and enforcement of environmental laws, regulations, and policies. (Gov. Code, § 65040.12, subd. (e)).



# Objectives of EJ Issue Paper



**Build a network** of community leaders and organizations to inform and support the Council's EJ work;

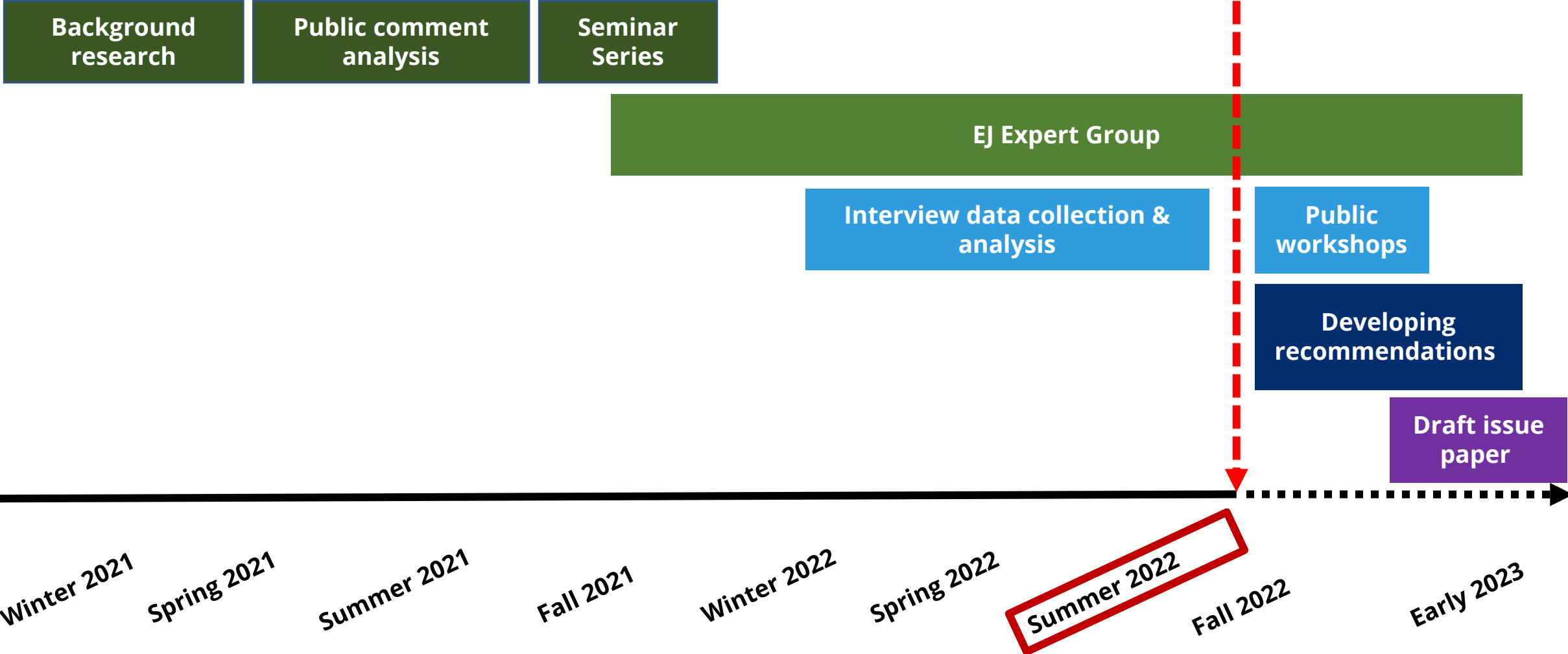


**Identify environmental justice issues** impacting communities in and around the Sacramento-San Joaquin Delta; and



**Identify options** to address those issues.

# Progress to date



## Expert Group

- **Barbara Barrigan-Parilla,**  
Restore the Delta
- **Bob Erlenbusch,**  
Sacramento Regional Coalition  
to End Homelessness
- **Matt Holmes,**  
Little Manila Rising
- **Sherri Norris,**  
California Indian  
Environmental Alliance

# Identifying EJ Issues in the Delta

(Word cloud of Delta EJ issues from interviews)



# Public Comment Analysis

## Representational Justice

- Delta towns/ communities
- Disadvantaged communities (DACs)
- EJ communities
- Terminology
- Tribal sovereignty
- Vulnerable communities

## Procedural Justice

- Language access
- Meaningful involvement
- Meeting support
- Transparency

## Distributive Justice

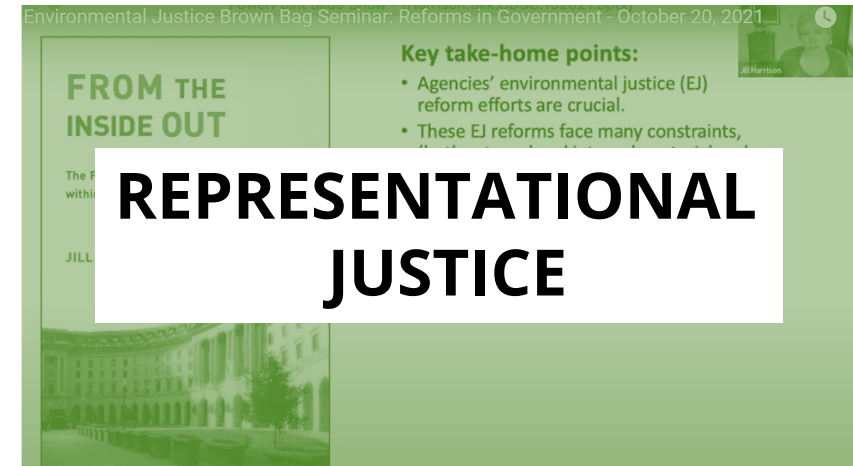
- Climate change impacts
- Cultural resources
- Drinking water supply
- Flood risk
- Food access
- Harmful algal blooms
- Human right to water
- Job access
- Levee investments
- Public health
- Subsistence fishing
- Tribal cultural resources
- Urban development
- Water affordability
- Water quality



# Seminar Series with EJ Scholars



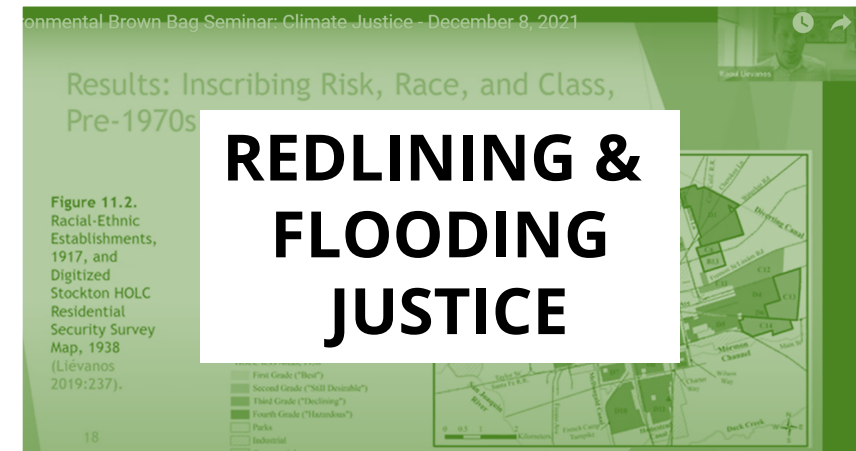
Dr. Kristen Dobbin (UC Berkeley) & Laurel Firestone (State Water Board)



Dr. Jill Harrison (CU Boulder)



Dr. Kyle Whyte (U. Michigan)



Dr. Raoul Lievanos (U. Oregon)

# In-Depth Interviews



Stockton Environmental Justice Initiative (CalEPA)

# Overview of Interviews

- **22 interviews** with EJ and community-based organizations
- Targeted **issue diversity** and **regional geographic** coverage

## Interviewees' focus areas:

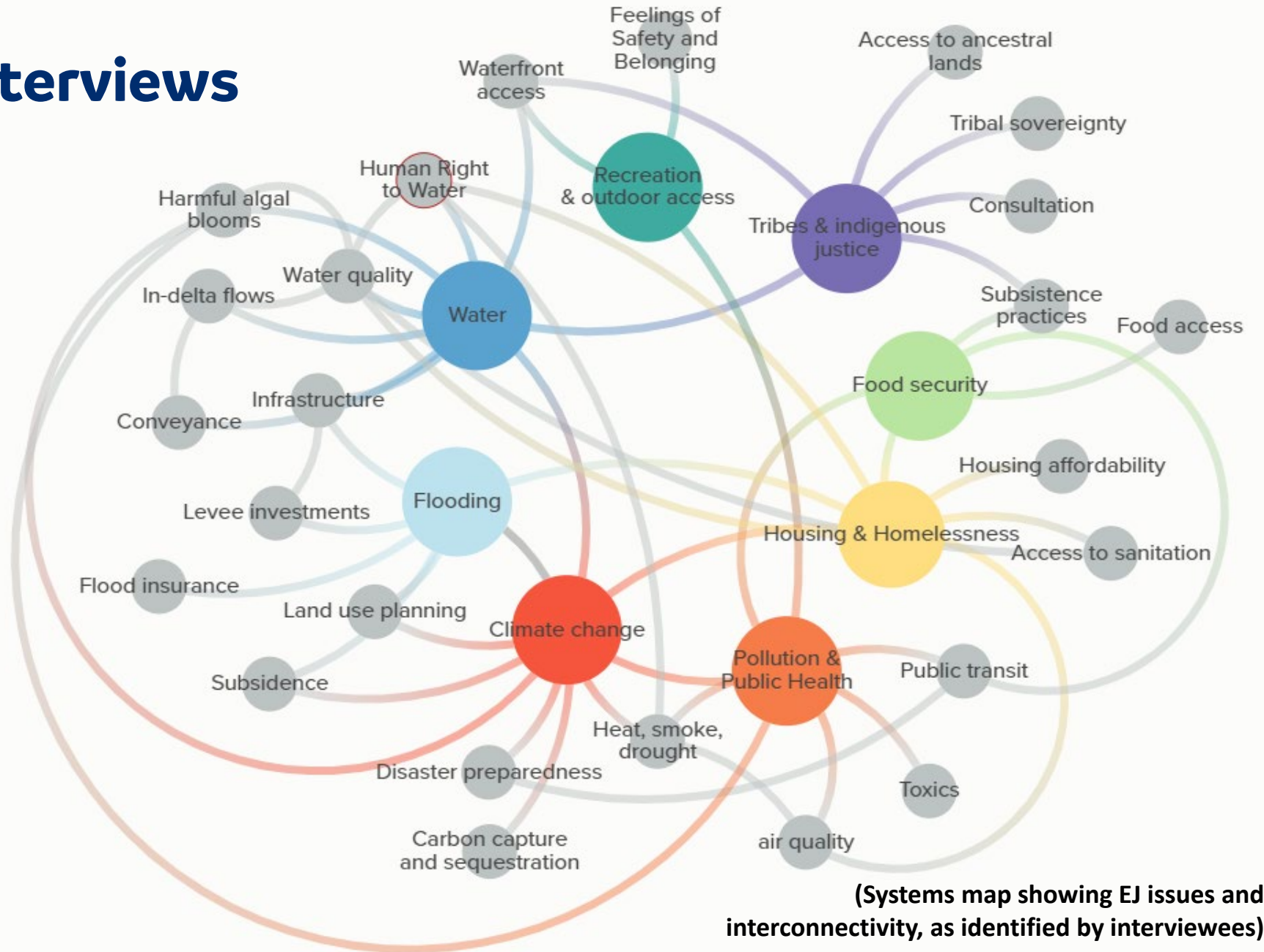
- General EJ
- Water
- Public health
- Jobs/ workforce training/ education
- Housing & unhoused communities
- Basic services (healthcare, food, housing)
- Latino/a advocacy
- Outdoor/ recreation access
- Tribes & indigenous groups
- Disability justice
- Local service providers

## Geographic coverage of interviewees:

- Interior Delta (n = 2)
- Sacramento (n = 4)
- Stockton (n = 6)
- Contra Costa County (n = 4)
- Bay Area (n = 3)
- Statewide (n = 3)

# EJ issues from Interviews

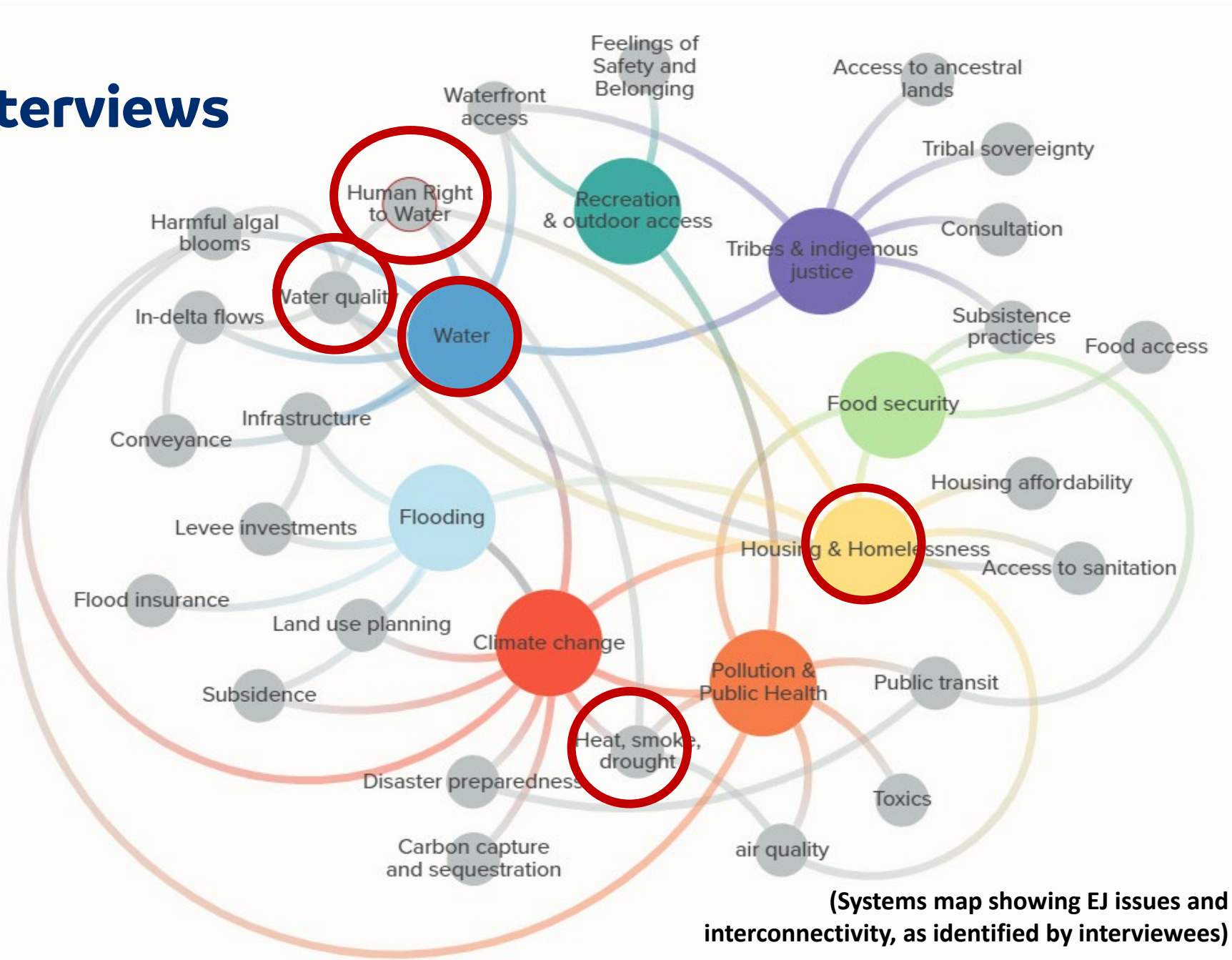
*“Everything is connected. When you change one thing, it will change another. We must use that intersection to build [broader] community with groups that are not explicitly focused on the issue at hand.”*



**(Systems map showing EJ issues and interconnectivity, as identified by interviewees)**

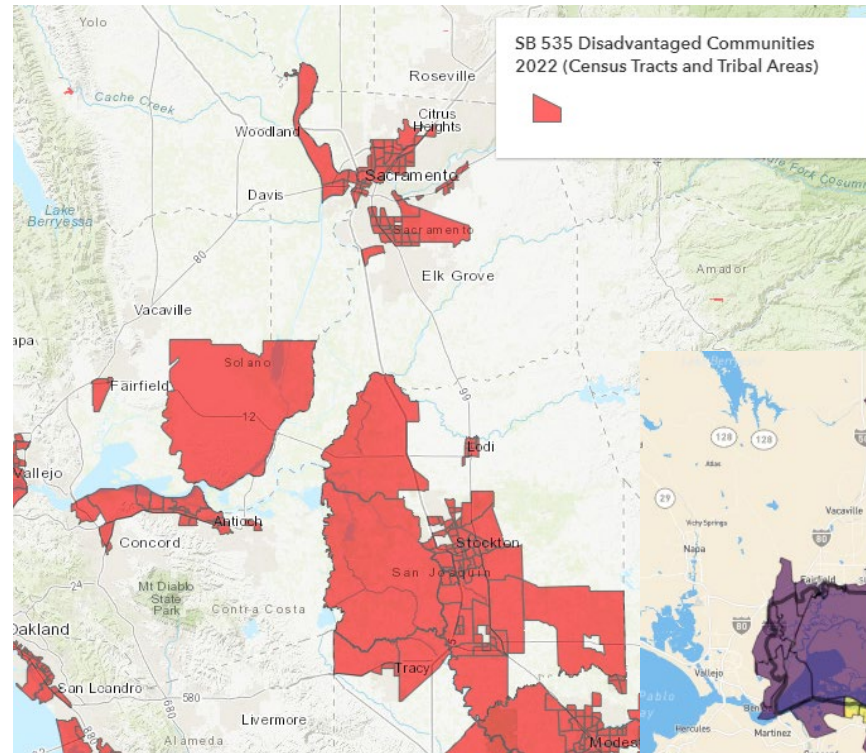
# EJ issues from Interviews

*“Everything is connected. When you change one thing, it will change another. We must use that intersection to build [broader] community with groups that are not explicitly focused on the issue at hand.”*

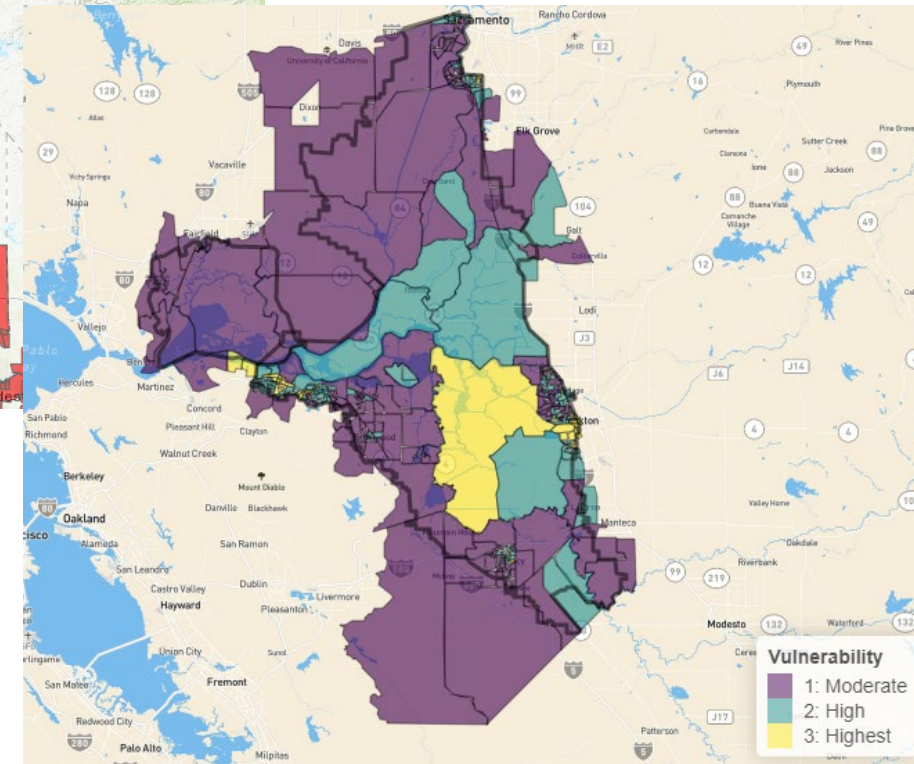


# Representational Justice: Communities Impacted by EJ Issues in the Delta

- Minority communities/communities of people of color
- Low-income communities
- Tribes and Indigenous communities
- Immigrant communities
- Undocumented immigrants
- Renters
- Unhoused communities
- Food insecure communities
- Youth (youth at risk, foster youth)
- Elders/seniors
- People with disabilities
- LGBTQ+
- Delta legacy town residents

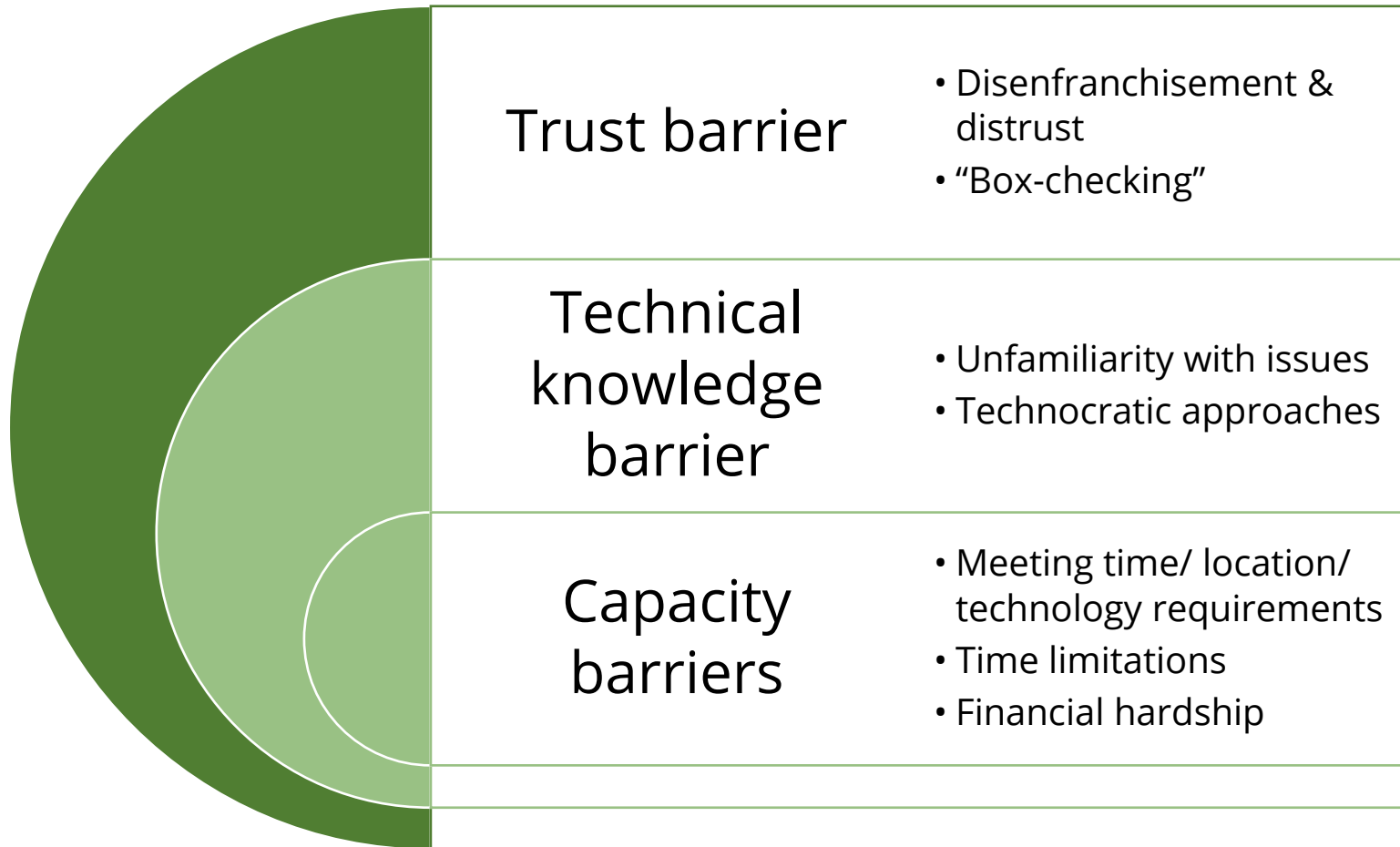


SB 535 Disadvantaged Communities: Census Tracts & Tribal Areas (CalEPA, 2022)



Social Vulnerability to Climate Change in the Delta (Delta Adapts, 2021)

# Procedural Justice: Fairness, Transparency & Accessibility of Decision-Making Processes



*“There’s so many agencies that want to help but it’s a lot of lip service or they just disappear. You can only have so many meetings before you think, “when is something tangible actually going to happen?”*

*“Meet people where they are. Address immediate issues [first], before people can care about bigger picture/longer-term issues. Bring together people that have trusted relationships with residents and trained organizers.”*

# Distributive Justice: Water

## Water supply:

- Water rights priority system
- Insufficient in-Delta flows
- Impacts versus benefits of Conveyance

## Water quality:

- Agricultural pollution and industrial contaminants
- Harmful algal blooms
- Poor groundwater quality

## Water affordability:

- Water rates & rate structures
- Insufficient funding for water systems to address concerns

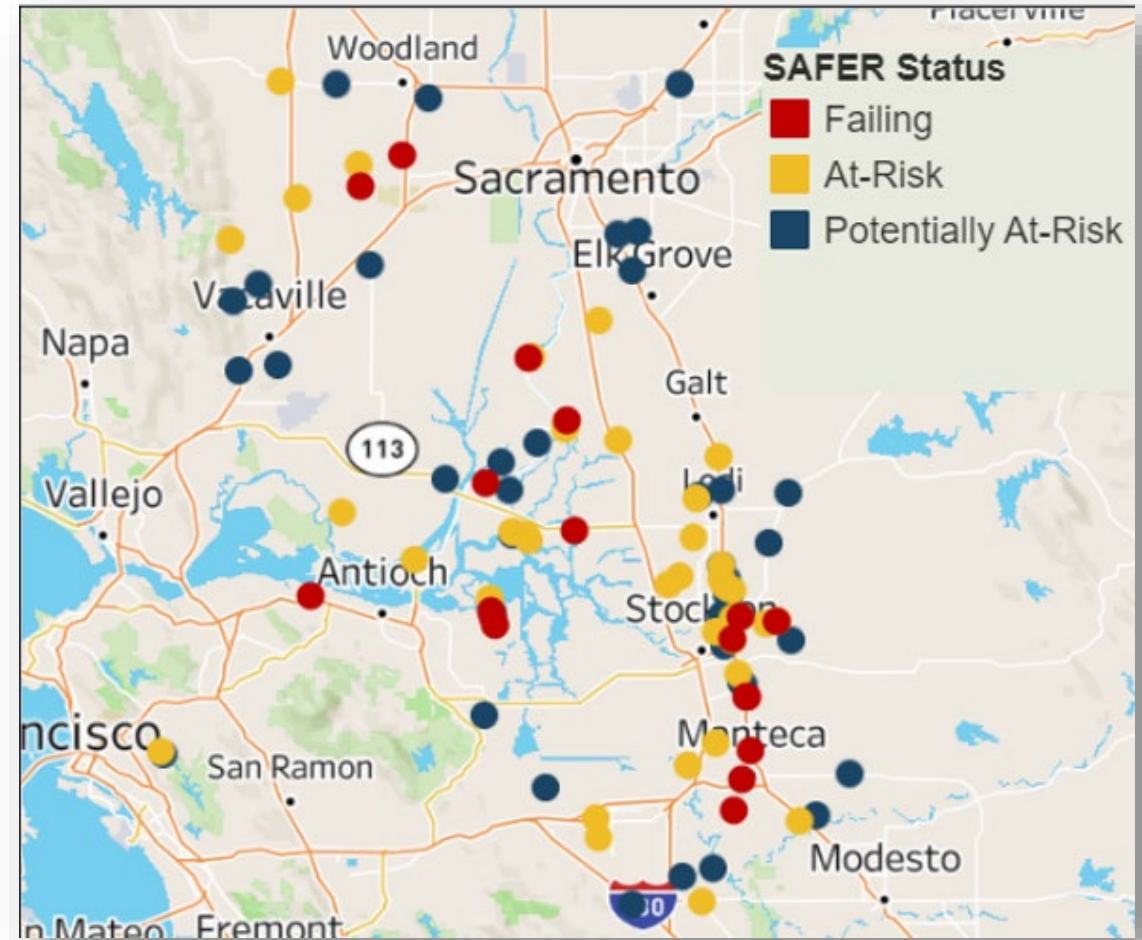
*"...[We] send water away from the Delta, while communities in the Delta...[have] water barely above acceptable standards for drinking."*

*"A day will come when water is the highest cost commodity. Those who can afford it will, and those who can't will get substandard water to drink."*



# Human Right to Water Violations in the Delta

- Across 5 Delta counties, 99 Community Water Systems, serving 188,000 people are **failing**, **at risk** or **potentially at risk** of failing HR2W standards:
  - 19 systems (89,000 people) failing
  - 39 systems (37,000 people) at risk of failing
  - 41 systems (62,000 people) potential at risk of failing



CA Drinking Water Needs Assessment (SWRCB, updated May 2022)

**EXPERT PERSPECTIVE:**

Restore the Delta

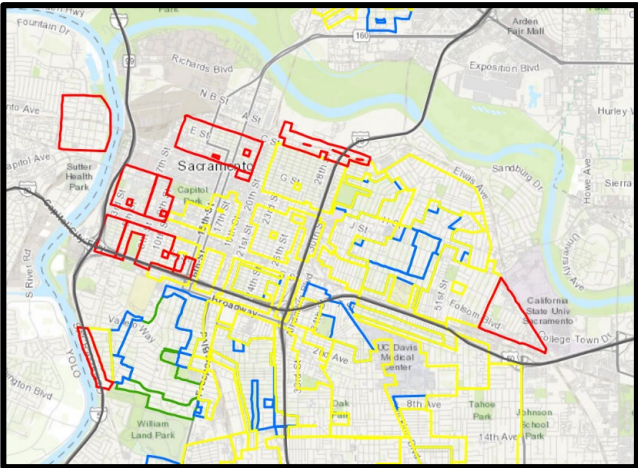
# Distributive justice: Pollution exposure & public health inequities

- **Historic redlining** and present-day **land use planning** resulting in disproportionate exposure to environmental harms
- Long-term, generational **health impacts due to pollution exposure**, lack of access to health services, public transport, & healthy food

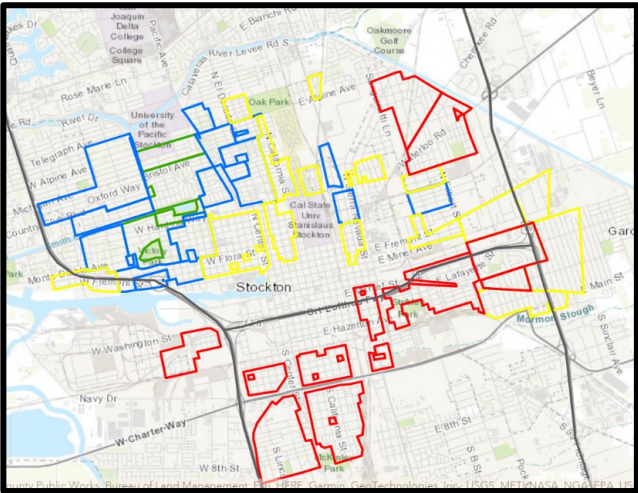
*“Everything in EJ is intersectional – affordable housing, vulnerable communities, public health, air pollution, inequity.”*

# Redlining Histories and Cumulative Pollution Burden in the Delta

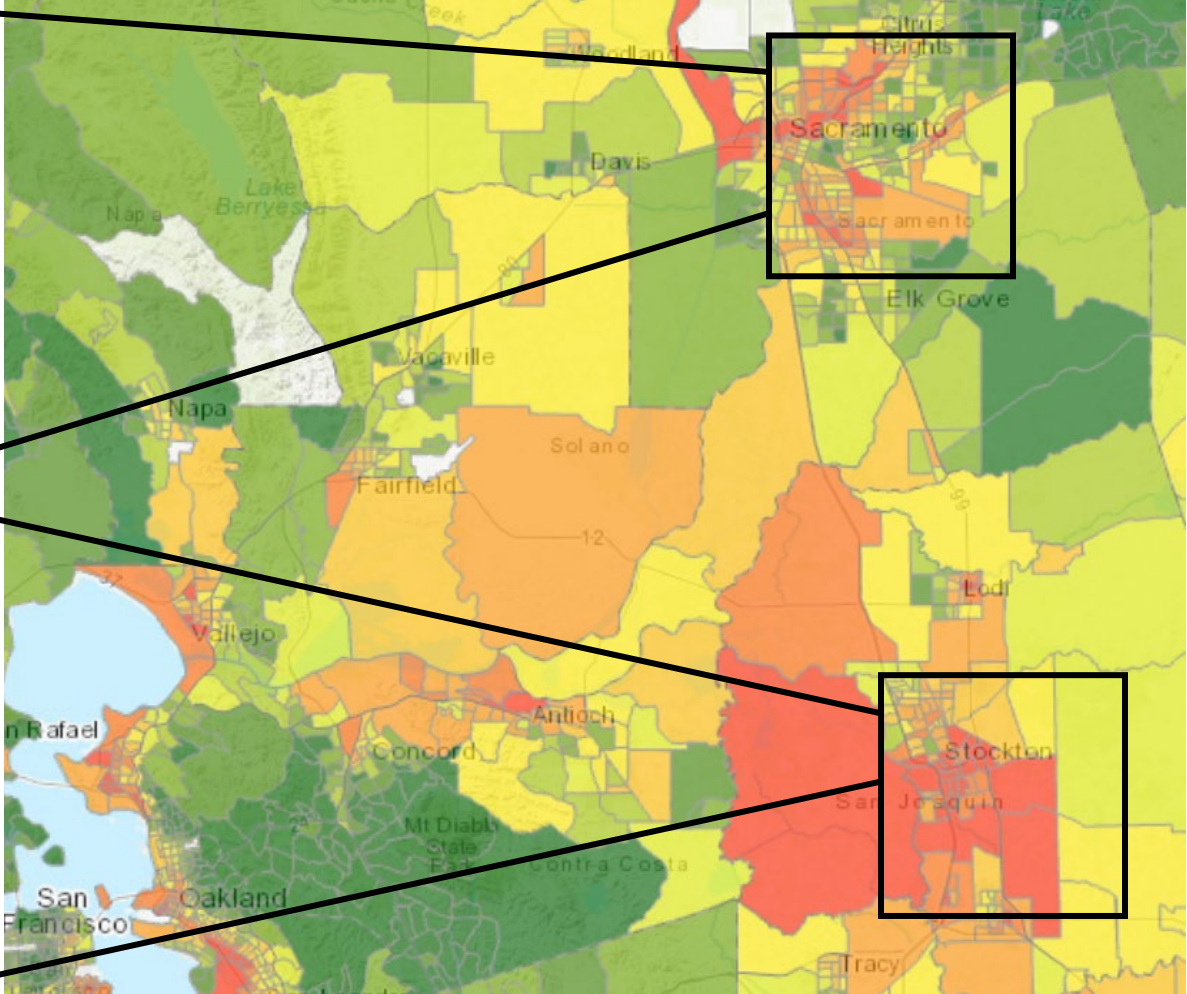
Sacramento



Stockton



**Redlining maps**  
(CalEPA, Pollution and Prejudice)



**Cumulative Pollution Burden**  
(CA OEHHA, CalEnviroScreen 4.0)

**EXPERT PERSPECTIVE:**

Little Manila Rising

# *Stockton's Little Manila*

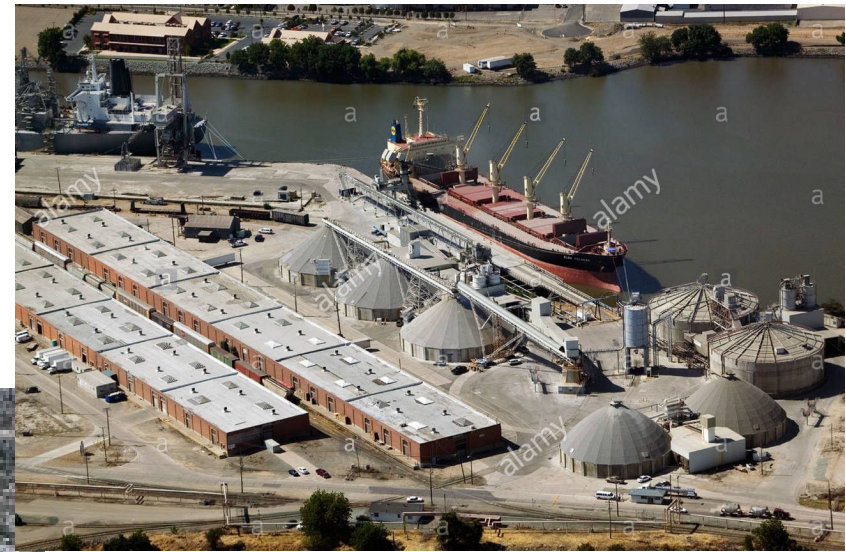
Marginalization, Resilience, & Renaissance



# Amazon Fulfillment Center



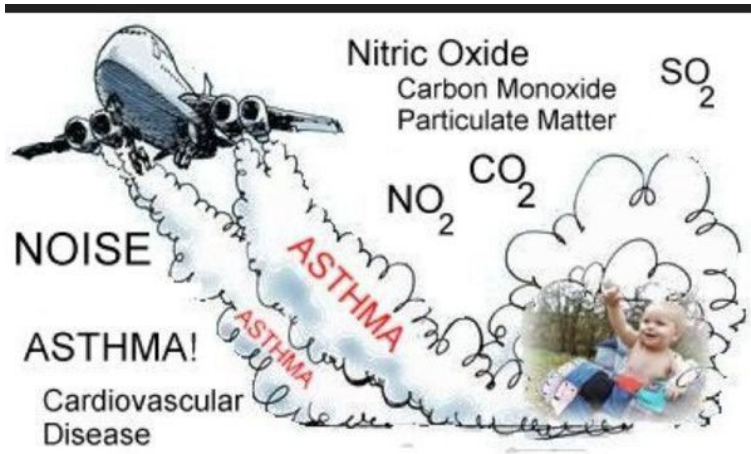
# Port Of Stockton



# Converging Rail



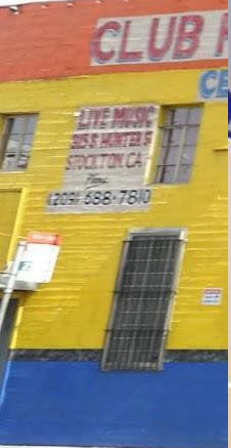
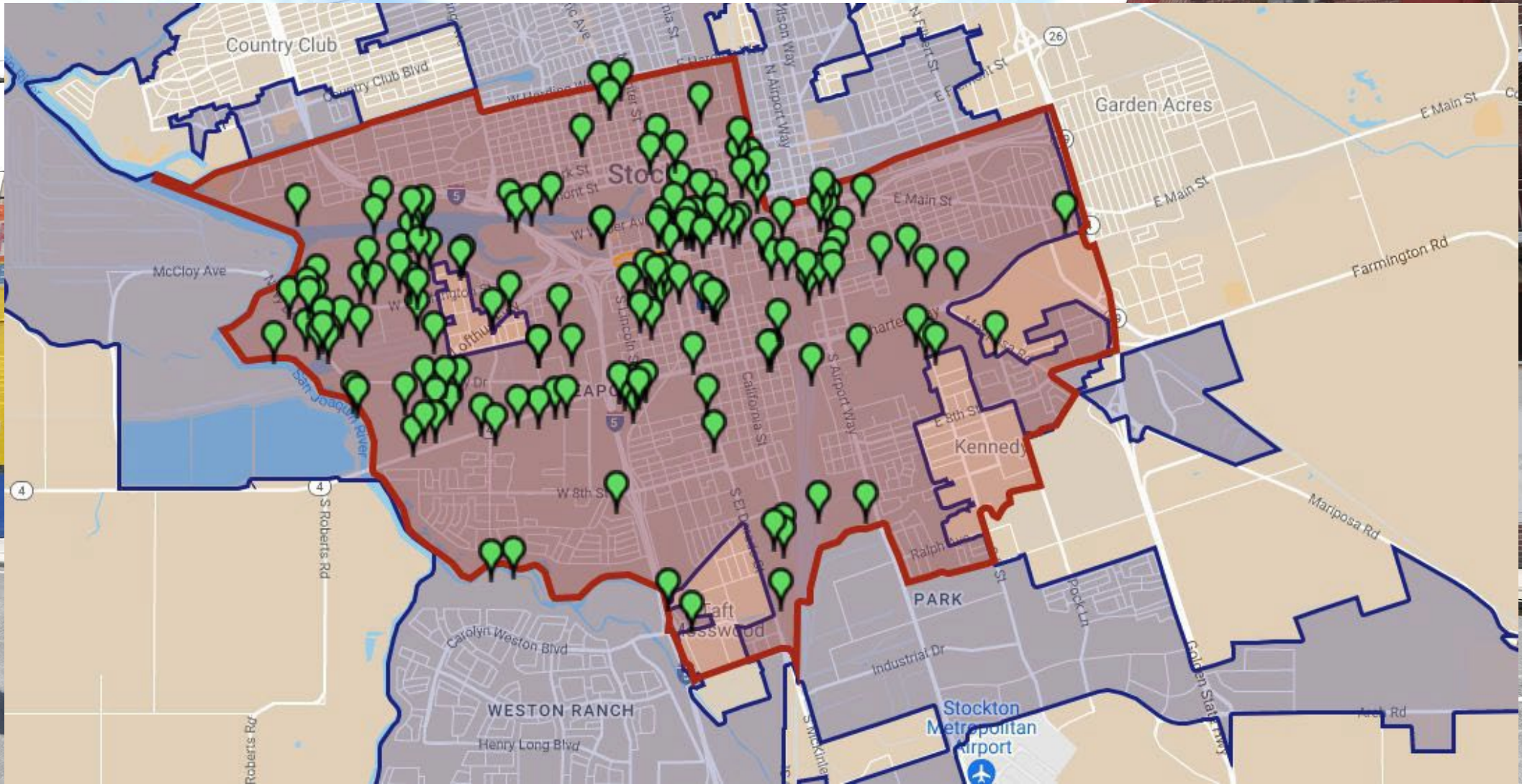
# Growing Airport



# 3 Major Freeways

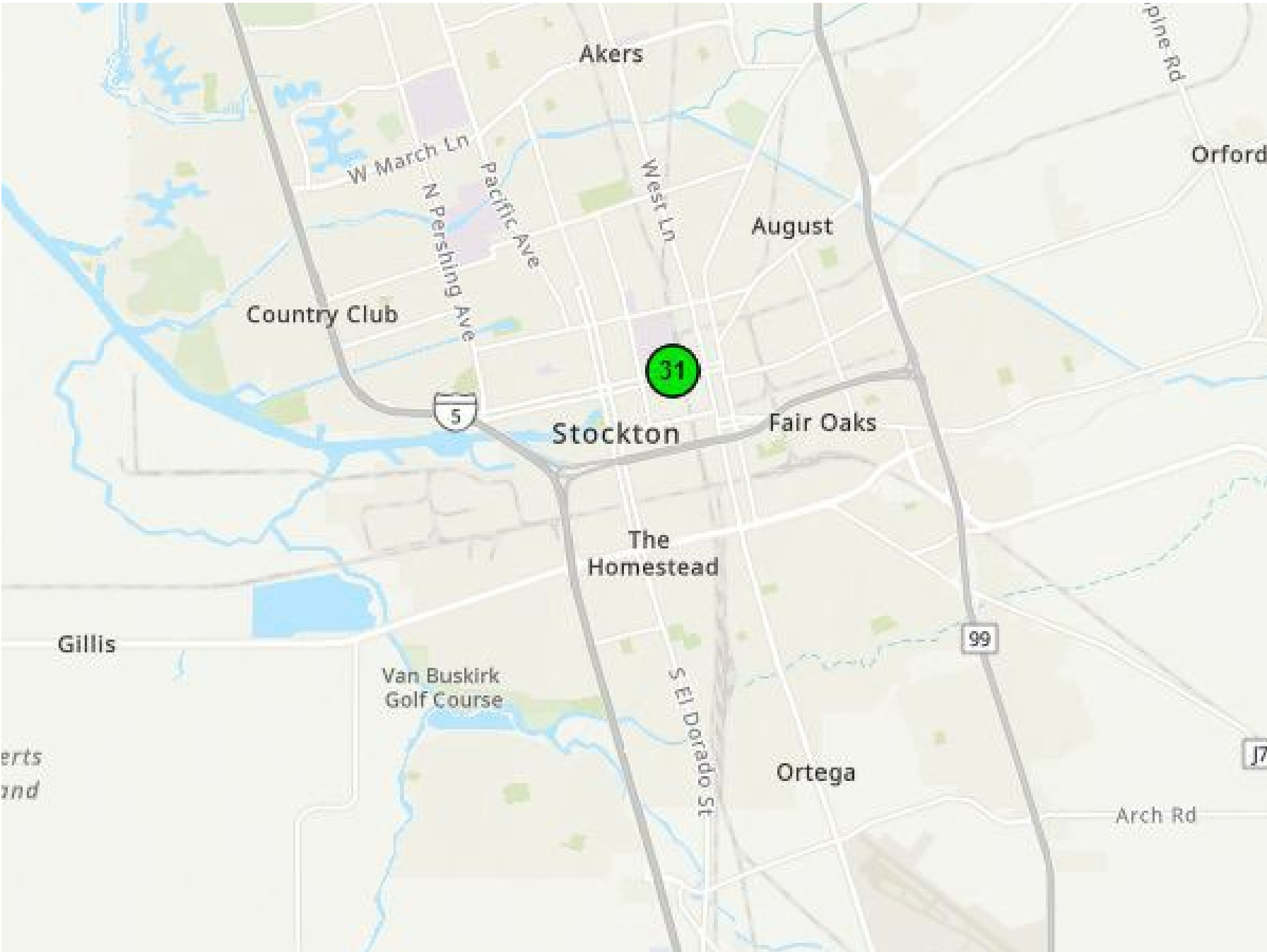


# Stationary Sources of Pollution in AB617

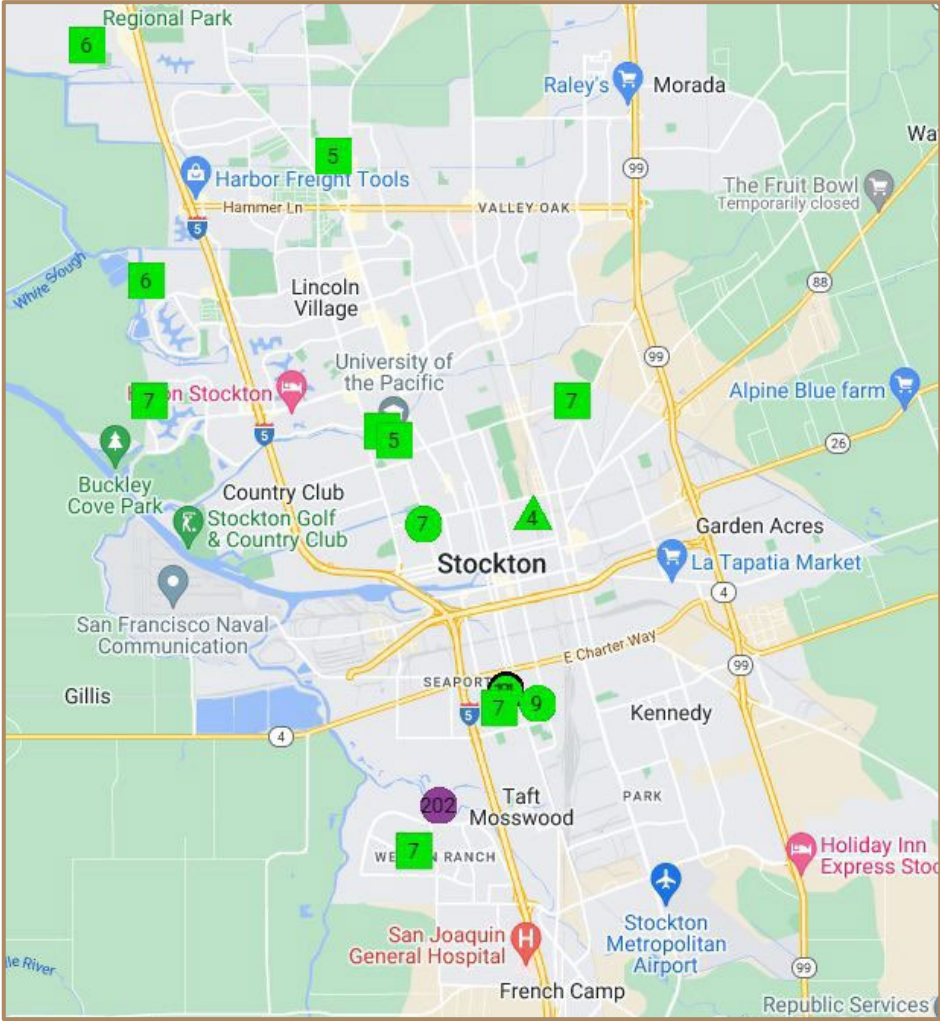




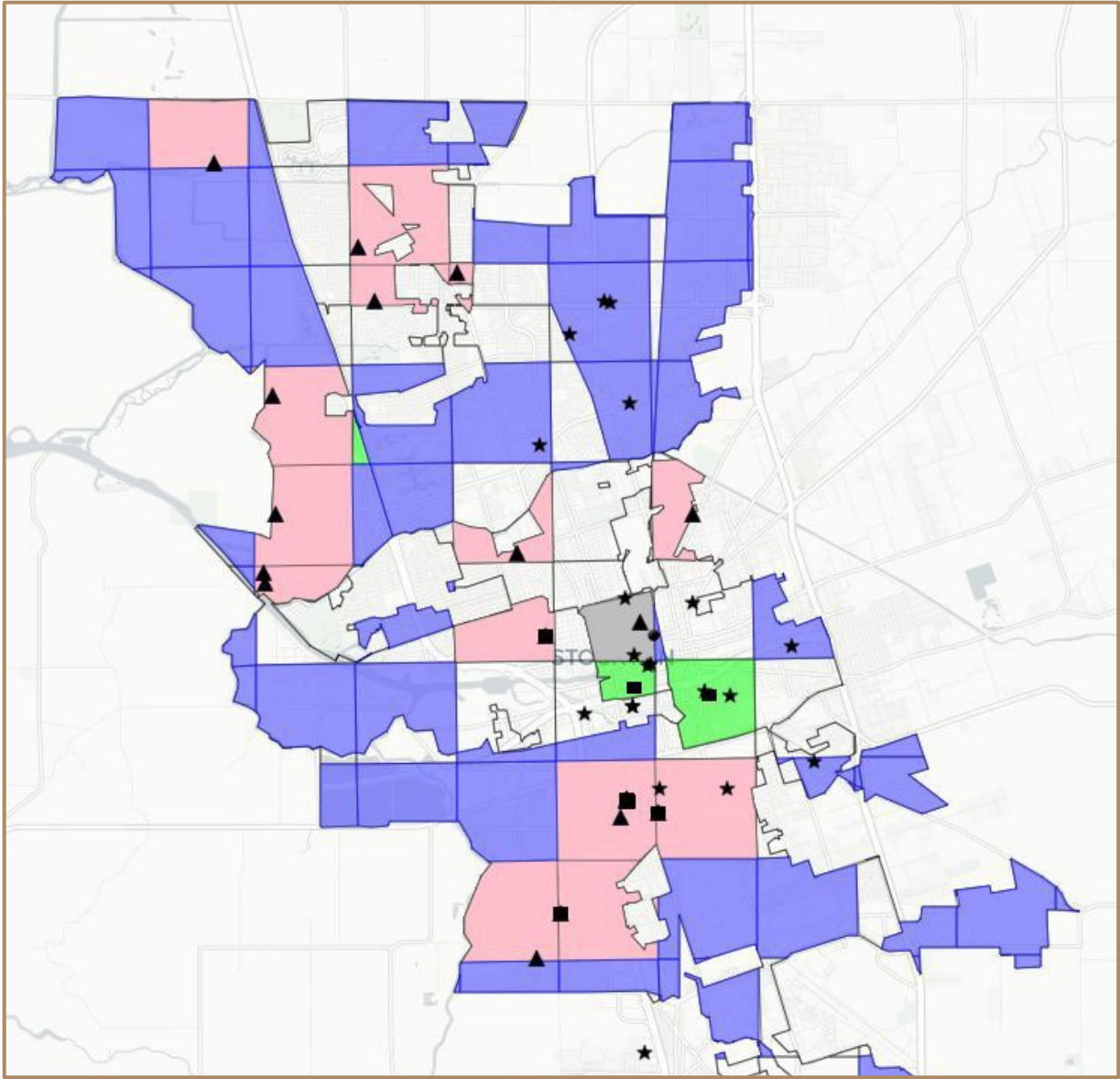
# One Lonely air now Monitor



# Distribution of Monitors



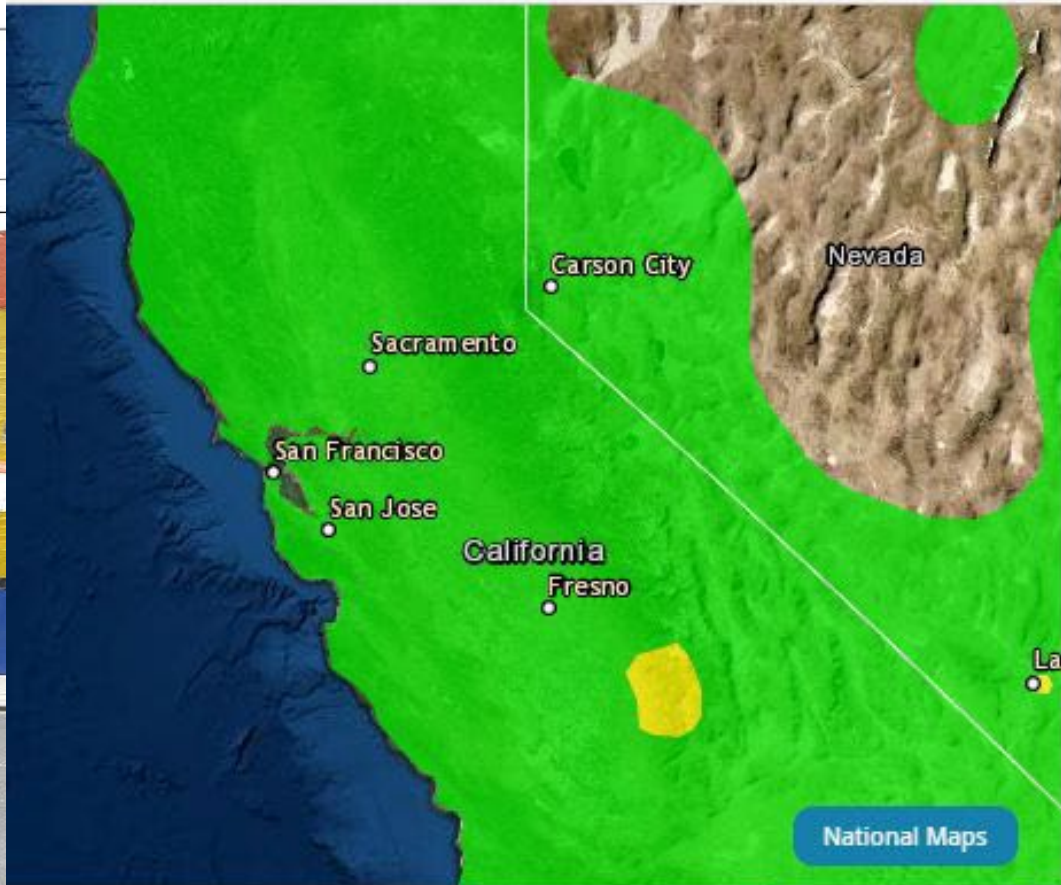
**Current Monitor locations  
(approx 17 w/ 7 located at All Saints)**



**70 Additional Monitors to be distributed across Stockton**

# Current Dispersion Modeling

## Current Air Quality



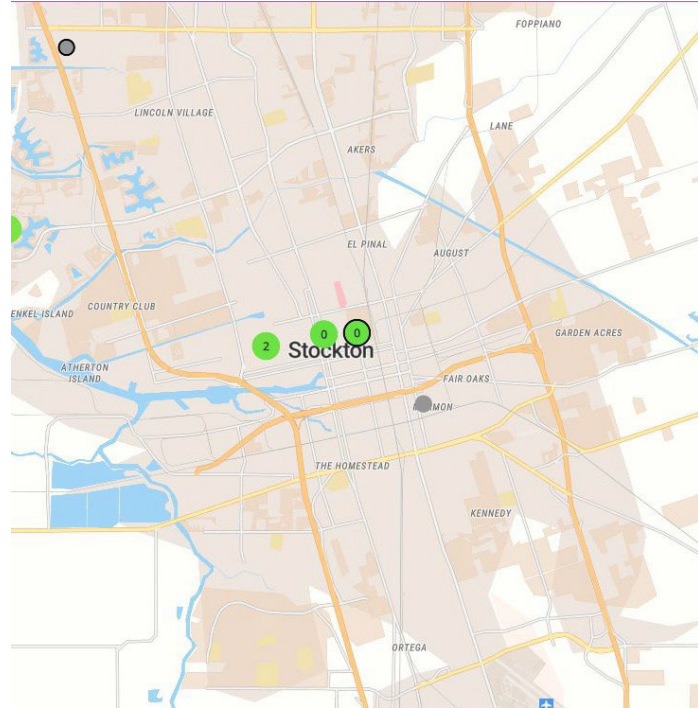
**Primary Pollutant**  
This pollutant currently has the highest AQI in the area.

▼ OZONE **31** Good  
Enjoy your outdoor activities.

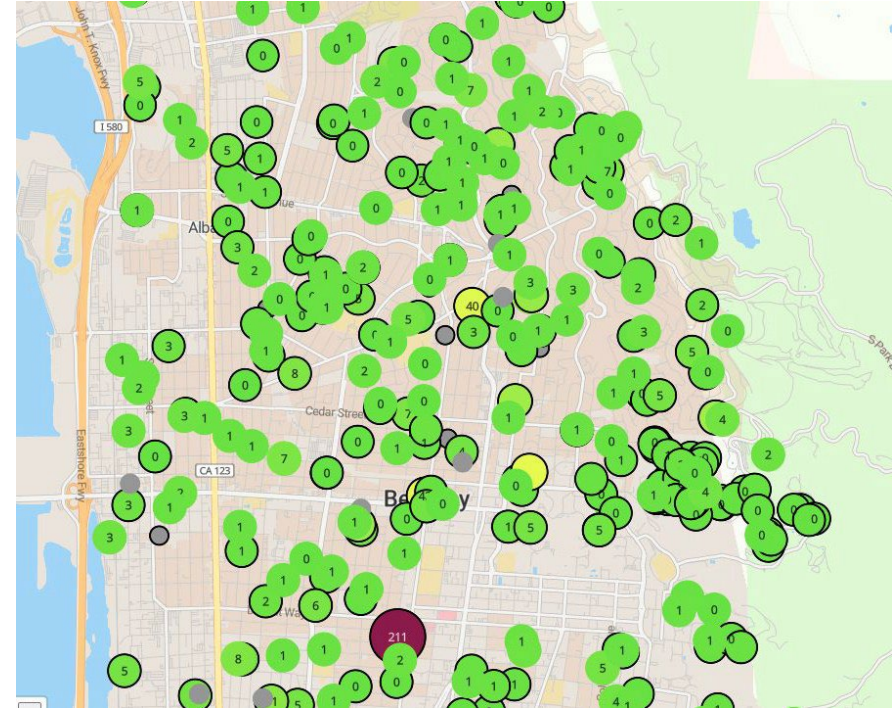
▶ PM2.5 **15** Good



# Community Air Monitoring Plan



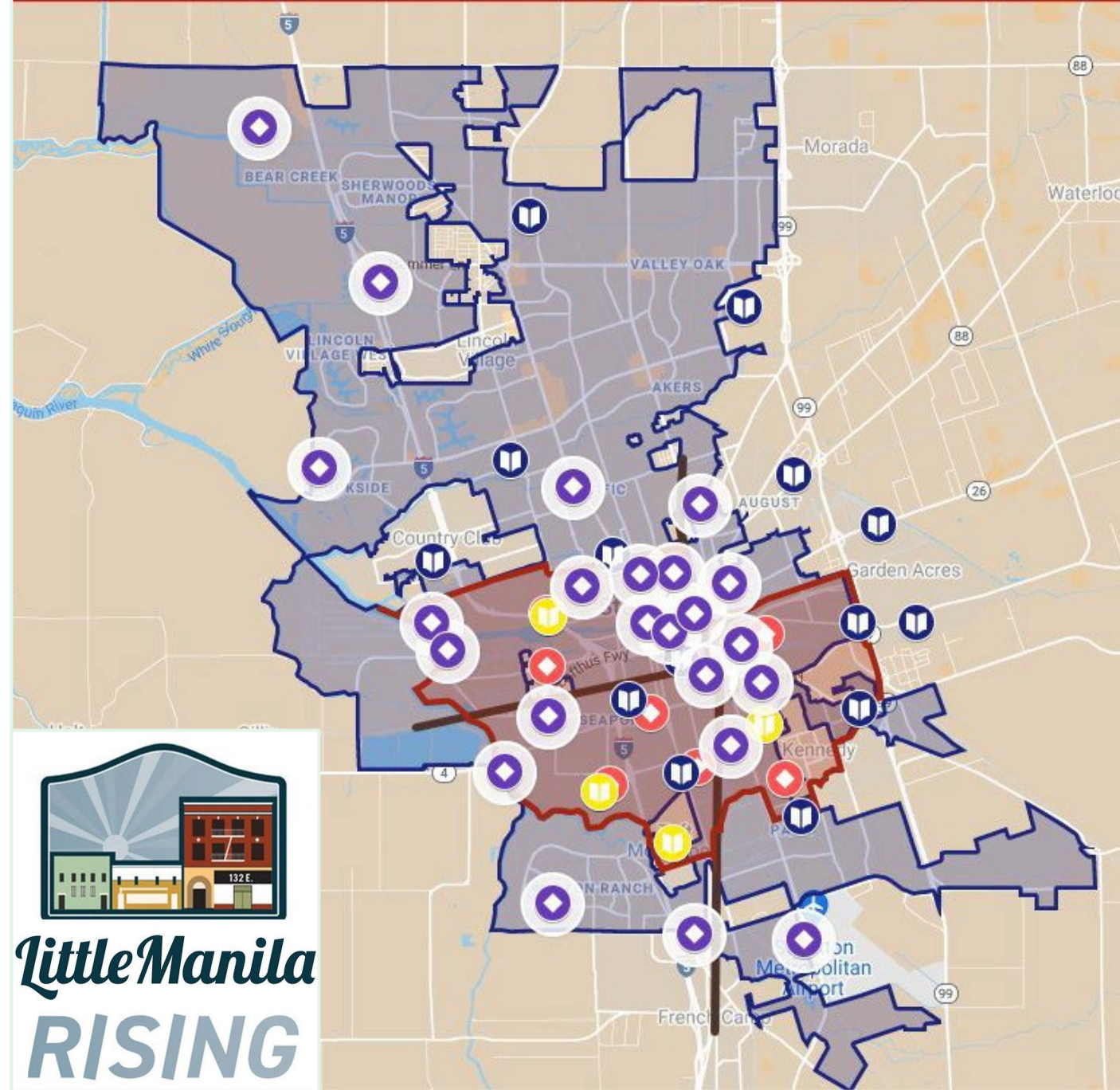
Stockton

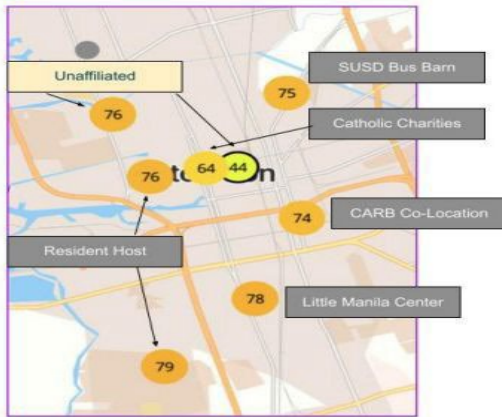


Berkeley

# Stockton Skywatch Little Manila

- Follow us on Social Media  
@littlemanilastockton  
#StocktonSkywatch





## Skywatch Elements



**Air Monitoring**

**Job training & Academic Partnerships**

**Biomonitoring**

**Behavioral Interventions**

**Electrification Equity Advocacy**

**Policy Watchdog**

### Community Air Monitoring

A Remote Sensor Network of Purple Air particulate sensors will form the backbone of our air quality (AQ) work by monitoring the air we breath, block-by-block and in real time to inform residents. Currently Central California Asthma Collaborative has provided 12 initial monitors that are collecting *baseline* and *reference data*. There are currently (6) calibrated sensors online and live at PurpleAir.org, (6) more are slated for key emission sources.

## Skywatch Elements

### Job Training & Academic Partnerships

In partnership with UC Merced and the CA Department of Justice, Little Manila Rising will deploy an additional 70 remote sensors across South Stockton as part of a larger (150) sensor array stretching South along the I-5 & 99 corridors to characterize Transportation Related Air Pollution (TRAPS).



UNIVERSITY OF CALIFORNIA  
**MERCED**

Deployment of the sensors will allow us to develop an Environmental Monitoring career pathway that bridges the public health, technology and utility sectors so that we can create meaningful and lasting jobs that serve and protect our communities.



**OEHHA**  
California Office of Environmental  
Health Hazard Assessment

### Biomonitoring

The California Office of Environmental Health Hazards Assessments (OEHHA) is partnering with Little Manila Rising to facilitate a "Biomonitoring" study in a South Stockton Elementary School. *Biomonitoring* entails comparative urine analyses that demonstrate the benefits of designing air filtration in schools with scientific control measures that assure both the sufficient *fresh air intake* mandated by AB 841 and which mitigates the chronic air pollution in our AB617 defined study area.

## Skywatch Elements

### Behavioral Intervention

Partnering with Central Valley Air Quality Coalition (CVAQ) to distribute Wildfire "Protect Yourself" information and N95 masks to "hard to reach" migrant farm workers. We're delivering *personal protective equipment* and *know your rights* information so that farm workers can protect themselves when their employers fail to do so.



### Electrical Vehicle Equity

*Personal Cars* ~ Little Manila Rising is partnering with the Central California Asthma Collaborative (CCAC) on their Electrical Vehicle (EV) Equity program. We are Integrating public information from the Eevee Equity program into our existing Outreach and engagement programs to help identify underserved communities who are disproportionately impacted by transportation burdens. Many of our neighbors are already eligible for existing funding through the state, the automobile retail industry and the San Joaquin Valley Air Pollution Control District to ensure that our residents are not left behind during the electrical vehicle Revolution.



*Electric Buses* ~ LMR has been retained by the World Resources Institute to co-design their technical assistance strategy and to shape their advocacy work around the global transition to electric bussing using Stockton as a case study community.



WORLD  
RESOURCES  
INSTITUTE

## Skywatch Elements

### Policy Reform

Little Manila Rising's role on the Stockton AB617 Community Steering Committee has established us as a leading voice around environmental justice, regional air quality, and statewide climate change policy.

**Delta Stewardship Council (DSC) - Environmental Justice Policy Statement**  
Building on our successful rollout of the DSC : *Climate Vulnerability Assessment* this past spring, we have been engaged to help draft a policy statement to ensure vulnerable communities in the Delta region become valued stakeholders.



Delta  
Stewardship  
Council



**CARB's AB617 - South Stockton Community Emissions Reduction Plan (CERP)**  
With the CERP Implementation Phase underway we chair multiple subcommittees to maintain guardrails in the implementation of AB617 to ensure that our hard-won victories are delivered as promised by the San Joaquin Valley Air Pollution Control District.

**CARB's AB32 - Environmental Justice Advisory Committee (EJAC)**  
Executive Director Dillon Delvo was nominated and appointed to EJAC who has statutory authority to approve or reject the State of California *Carbon Neutrality Scoping Plan*. This statewide policy has major implications for Stockton as the plan not only calls for nature based solutions, and emissions reductions, it also hopes to accelerate carbon neutrality by burying massive CO2 Emissions 4,000 Feet under the Delta.



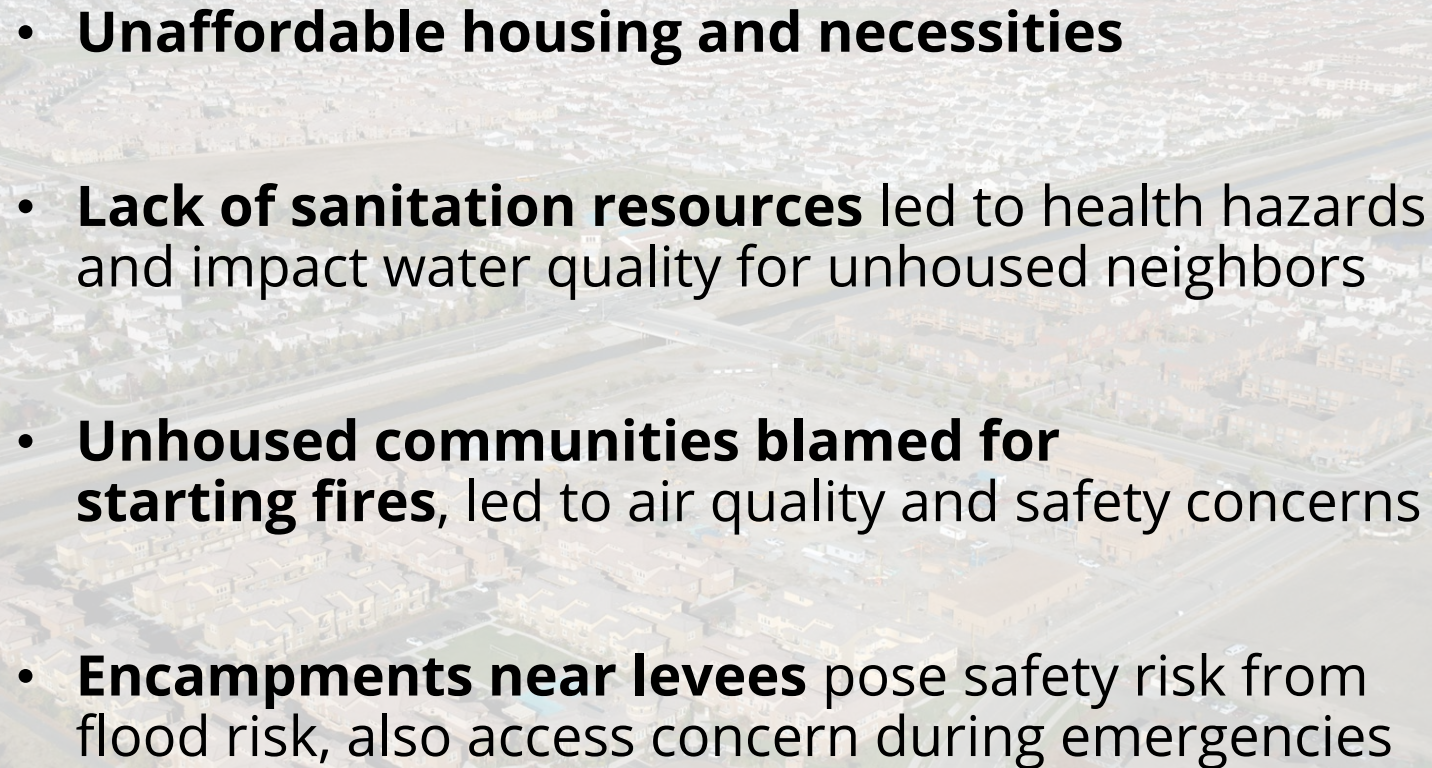
# *Stockton's Little Manila*

Marginalization, Resilience, & Renaissance



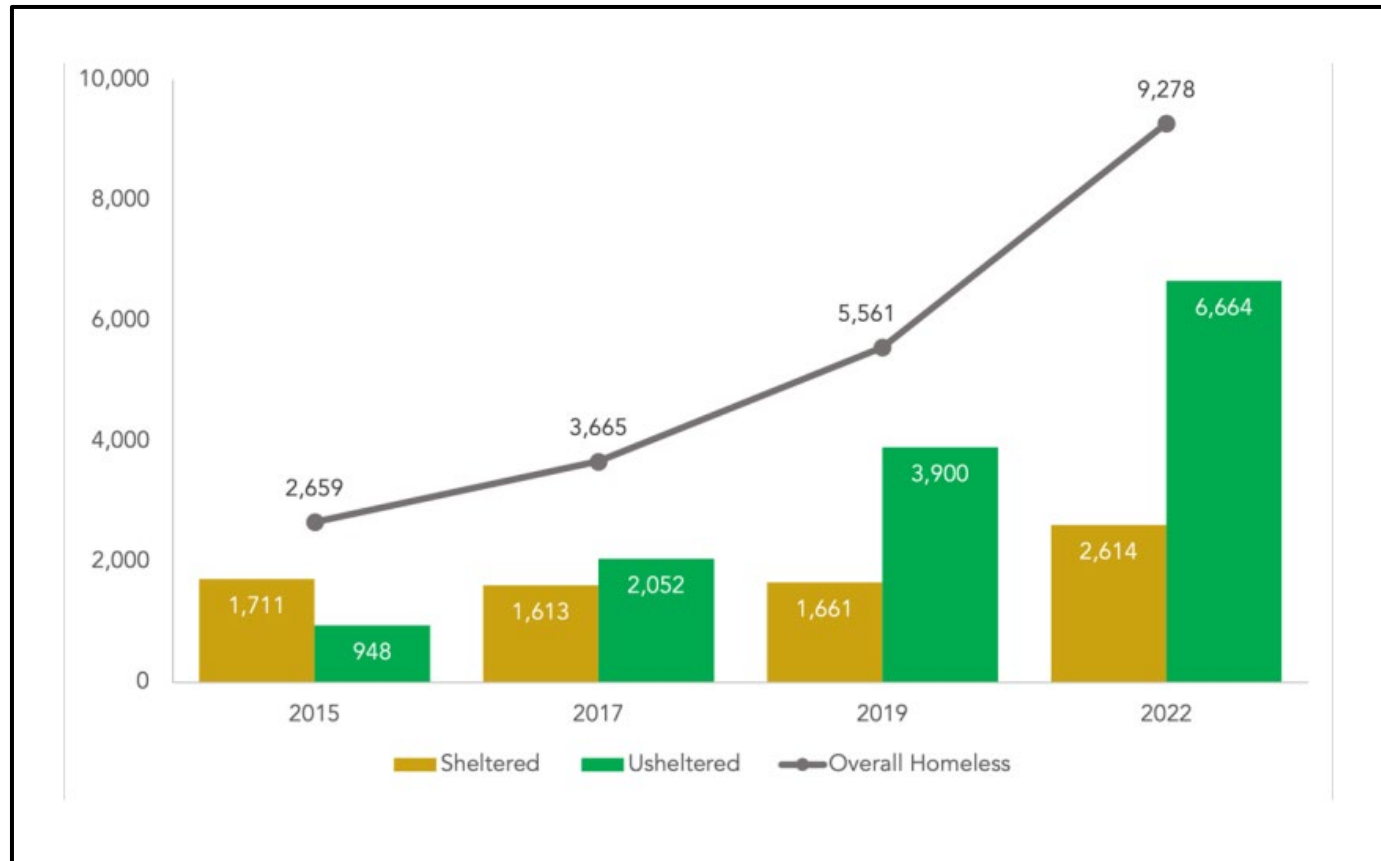


# Distributive Justice: Housing Injustices & Unhoused Communities

- 
- **Unaffordable housing and necessities**
  - **Lack of sanitation resources** led to health hazards and impact water quality for unhoused neighbors
  - **Unhoused communities blamed for starting fires**, led to air quality and safety concerns
  - **Encampments near levees** pose safety risk from flood risk, also access concern during emergencies

*“Lack of shelters and affordable housing... spill over into lack of sanitation, water quality, and public health issues. Thousands of people [sleep] outside and [the government] is not being proactive on the issue.”*

# Increasing Unhoused Population in Sacramento County



- Early 2022 survey **estimated 9,278 individuals** experiencing homelessness throughout Sacramento County
- **67% increase** in nightly homelessness since the last survey count in 2019
- **Highest estimate on record** of unhoused individuals per capita in Sacramento County

Estimates of unhoused individuals in Sacramento County 2015-2022  
("Homelessness in Sacramento County 2022 Report", CSUS)

# **EXPERT PERSPECTIVE:**

Sacramento Regional Coalition to  
End Homelessness

# Indigenous & Tribal injustices

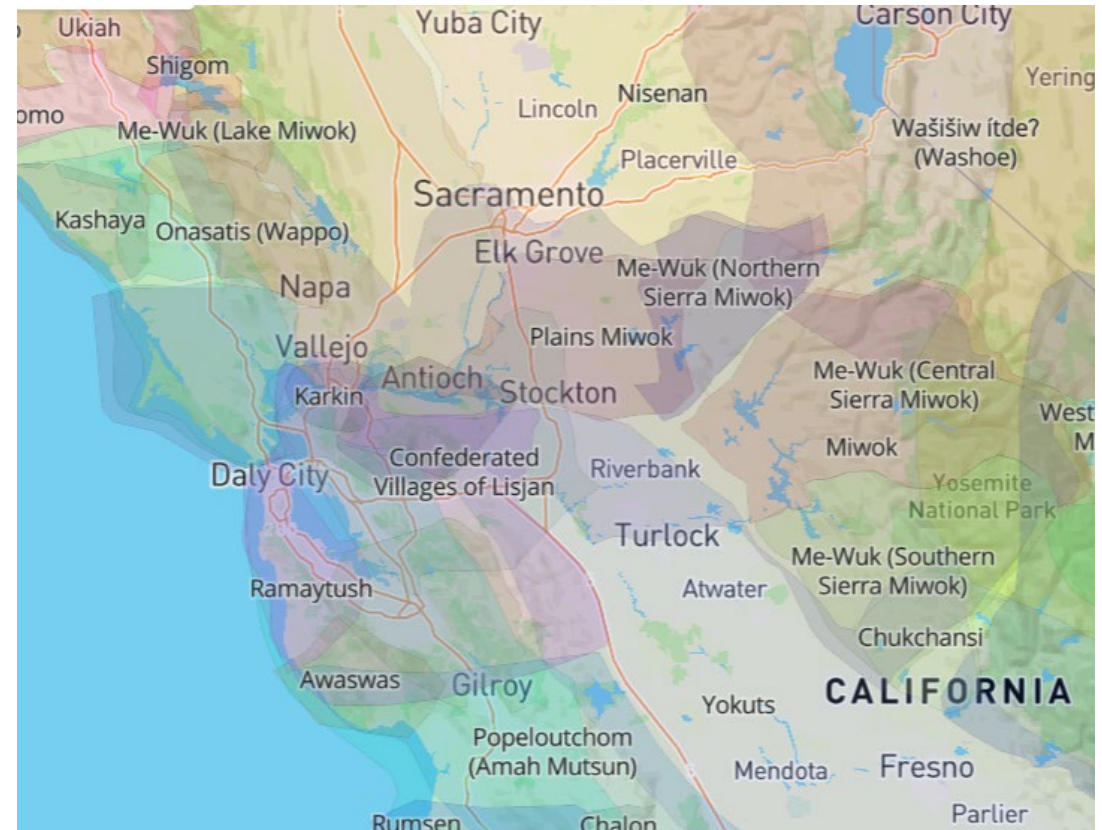
- Lack of recognition of **tribal sovereignty**, preservation, and Traditional Knowledge
- **Marginalization and exclusion** from decision-making processes and **inadequate Tribal Consultation**
- Disproportionate exposure to **environmental hazards**- water contamination, heat, air and noise pollution

*“This has become agencies telling the Tribes what they intend to do, but not providing opportunity for ‘free and prior informed consent’ to the action”*

# Indigenous Ancestral Lands in the Delta



Tribal ancestral lands in CA  
(parks.ca.gov)



Tribal ancestral lands in Northern-Central CA  
(native-lands.ca)

**EXPERT PERSPECTIVE:**

California Indian Environmental  
Alliance

# Key Takeaways

- **EJ issues in the Delta are wide-reaching, encompassing topics** very familiar to the Council, and areas traditionally outside of the Council's scope
- **EJ issues are extremely interconnected**; thus directions forward will need to be innovative, collaborative and multi-scale
- **EJ action is needed on multiple fronts**: government-community relations, public engagement, research, environmental monitoring and data collection in overburdened communities, analysis of policy options, planning, regulation, enforcement
- **EJ organizations were happy to share their experiences** and expertise and pleased to see Council's efforts starting with listening to communities

*"We need champions to push for change from within the system."*

# Next Steps and Timeline

## FALL 2022

- Finalize interview data analysis
- Community engagement and input on issues and recommendations
- Develop recommendations based on interview data and Expert Group

## WINTER 2023

- Drafting of issue paper in collaboration with Expert Group

## SPRING 2023

- Finalize issue paper, Council consideration of options





# Thank you

Connect with us



Scan the QR code  
to subscribe to our  
listserv



[Deltacouncil.ca.gov](http://Deltacouncil.ca.gov)



[@DeltaCouncil](https://twitter.com/DeltaCouncil)



[@delastewardshipcouncil](https://www.instagram.com/delastewardshipcouncil)



[Delta Stewardship Council](https://www.linkedin.com/company/DeltaStewardshipCouncil)



[@delastewardshipcouncil](https://www.facebook.com/delastewardshipcouncil)