

OCT 2021

# Visualizing Zooplankton Data from the Sacramento San Joaquin Delta

Luis Lechuga  
Intern, JVS



Delta  
Science  
Program

DELTA STEWARDSHIP COUNCIL

# Why visualize zooplankton data?

## Plankton are the Foundation of the Sacramento San Joaquin Delta Food Web

Zooplankton and phytoplankton support the world's largest and complex food webs

Without zooplankton, larger aquatic animals that human economies rely on couldn't exist

## Population Estimates are Telling of the Delta's Health

Increasing and decreasing population trends can illustrate the effects of climate change and overexploitation

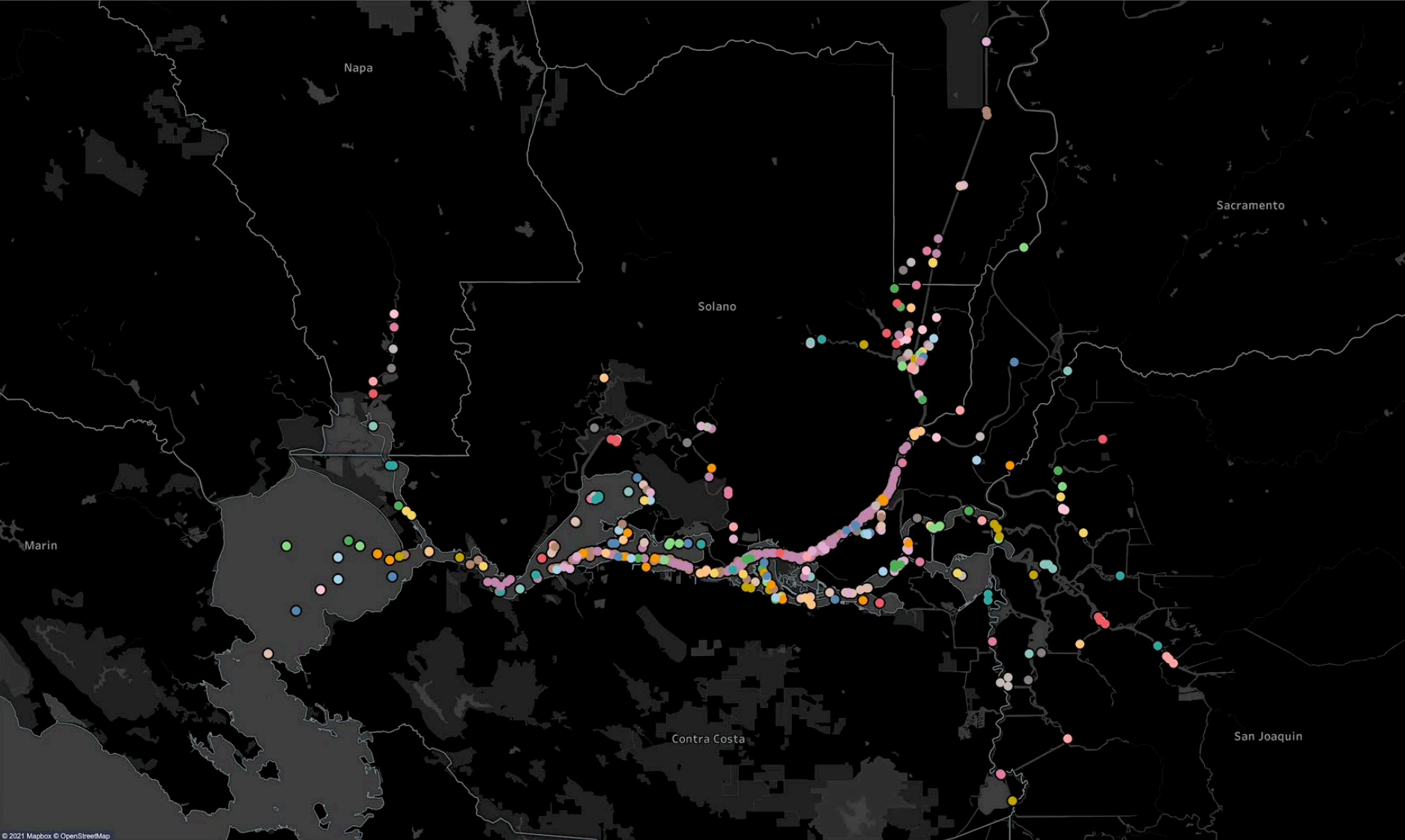
## Native and Invasive Species

Zooplankton data visualizations can clearly depict the introduction and growth of invasive species, as well as the health of native species

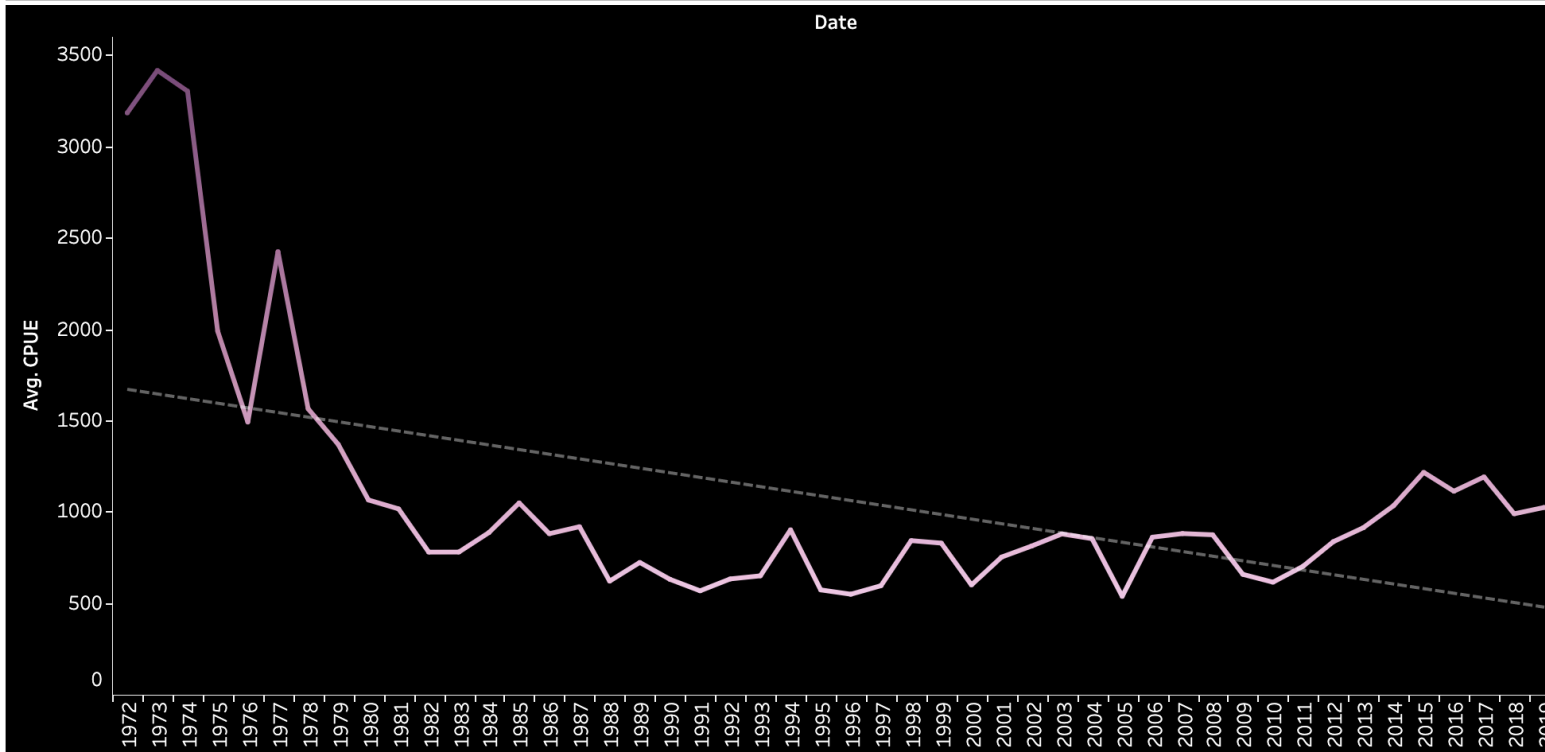
## Creating a Narrative for Local Communities

Data is extremely valuable, but also meaningless if affected communities cannot comprehend it. Visualizations make scientific data more accessible

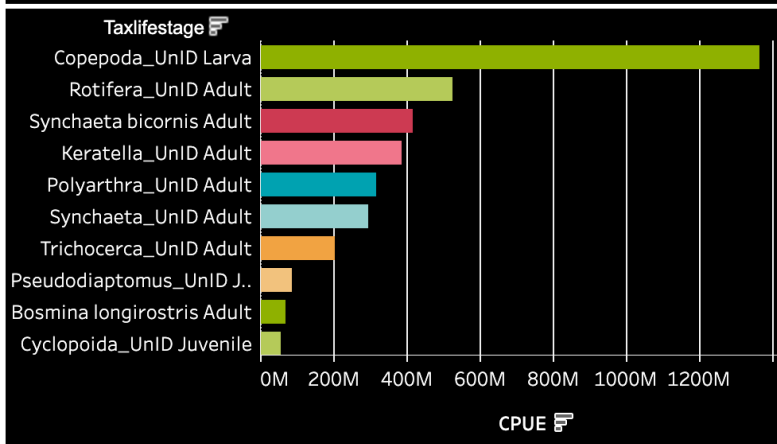
Stations around the Sacramento San Joaquin Delta



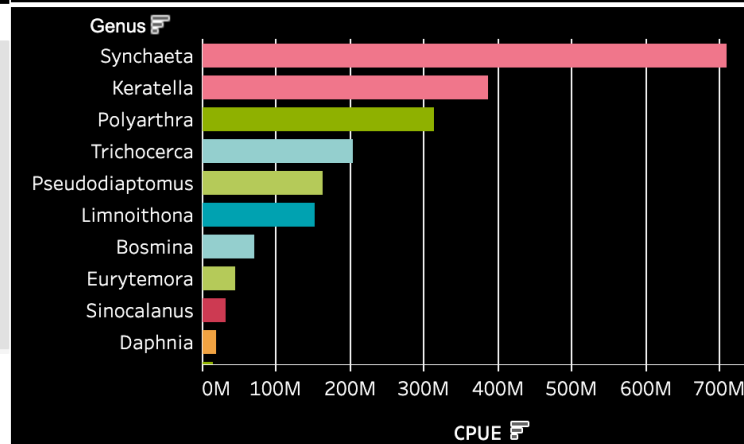
# Zooplankton Population Over Time



## Top 5 Zooplankton by Population

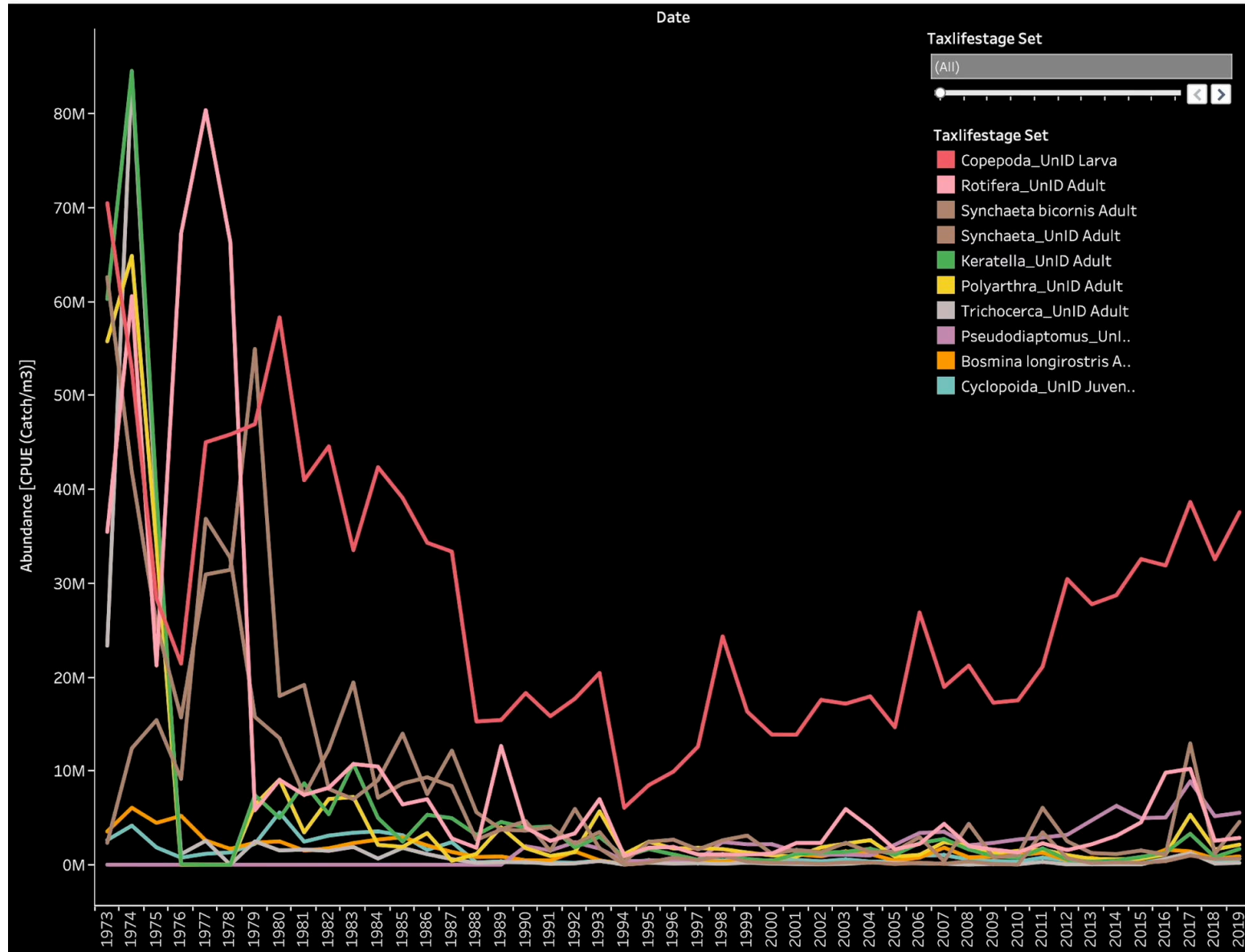


## Total Population by Genus

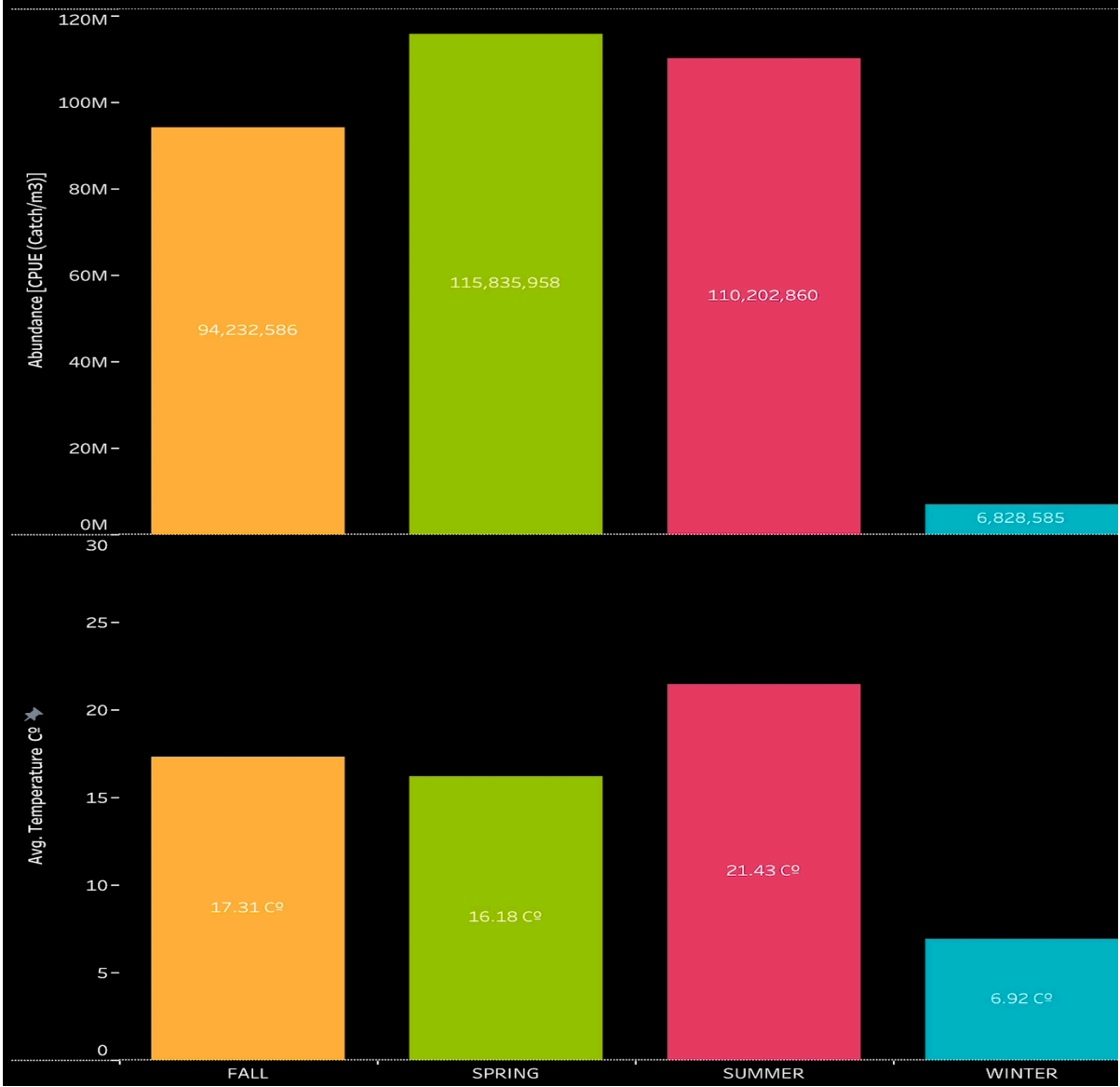


# Top 10 Zooplankton Populations Over Time

## All



# CPUE v TEMP SEASON 1972



All  
All

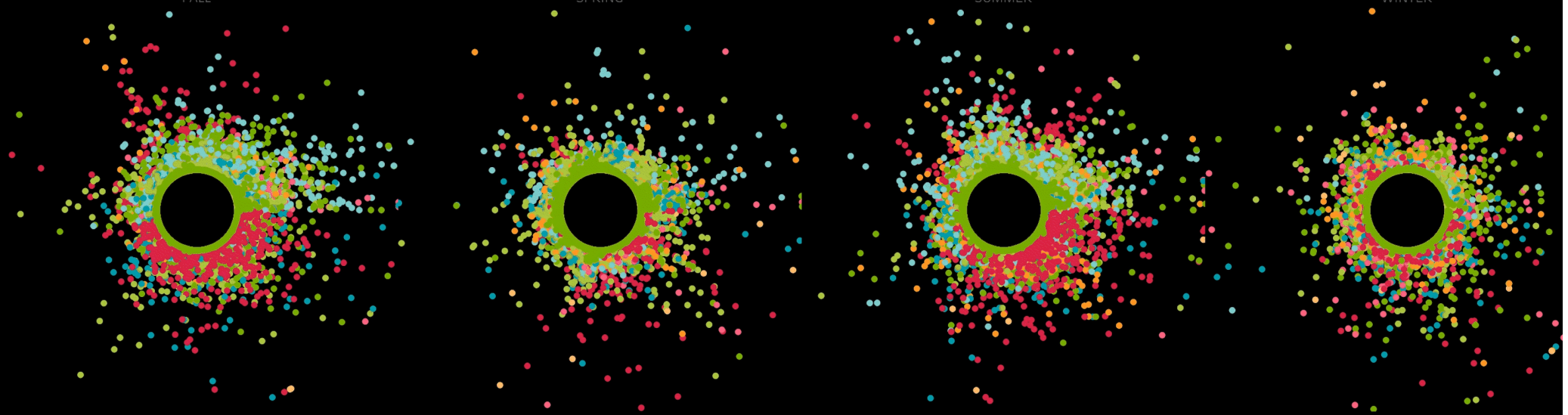
FALL

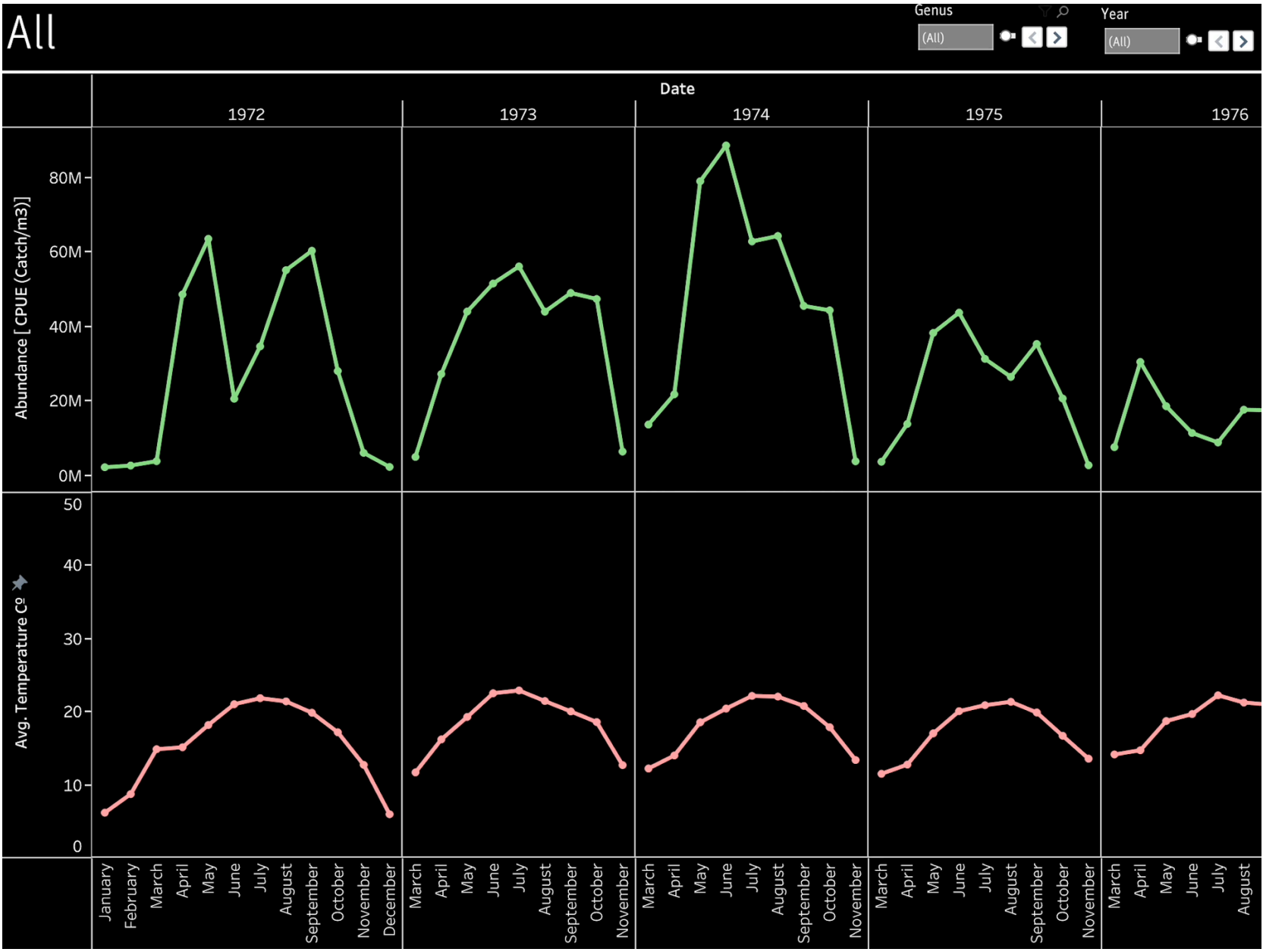
SPRING

SEASON

SUMMER

WINTER







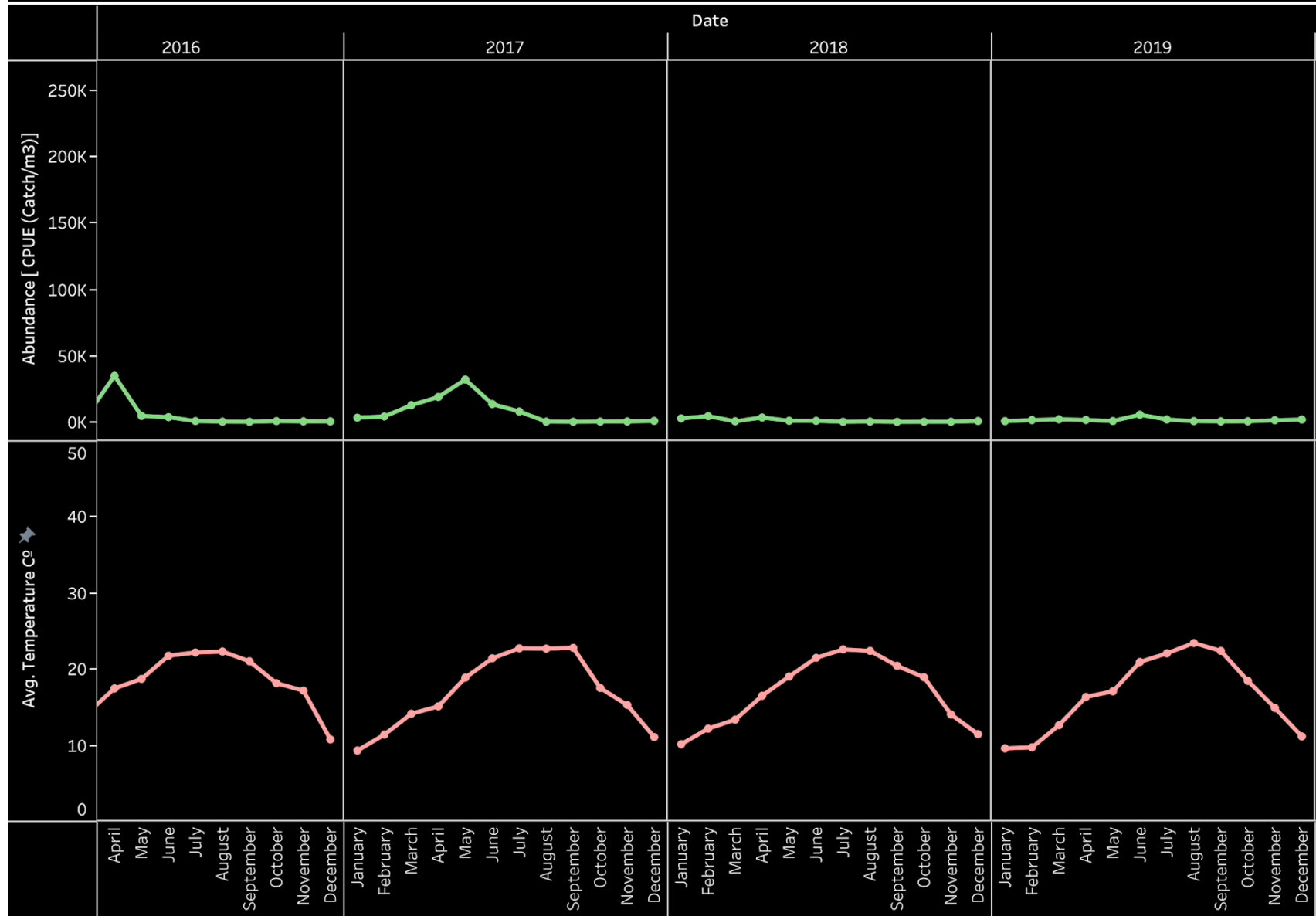
# Acanthocyclops

Genus

Acanthocycl...

Year

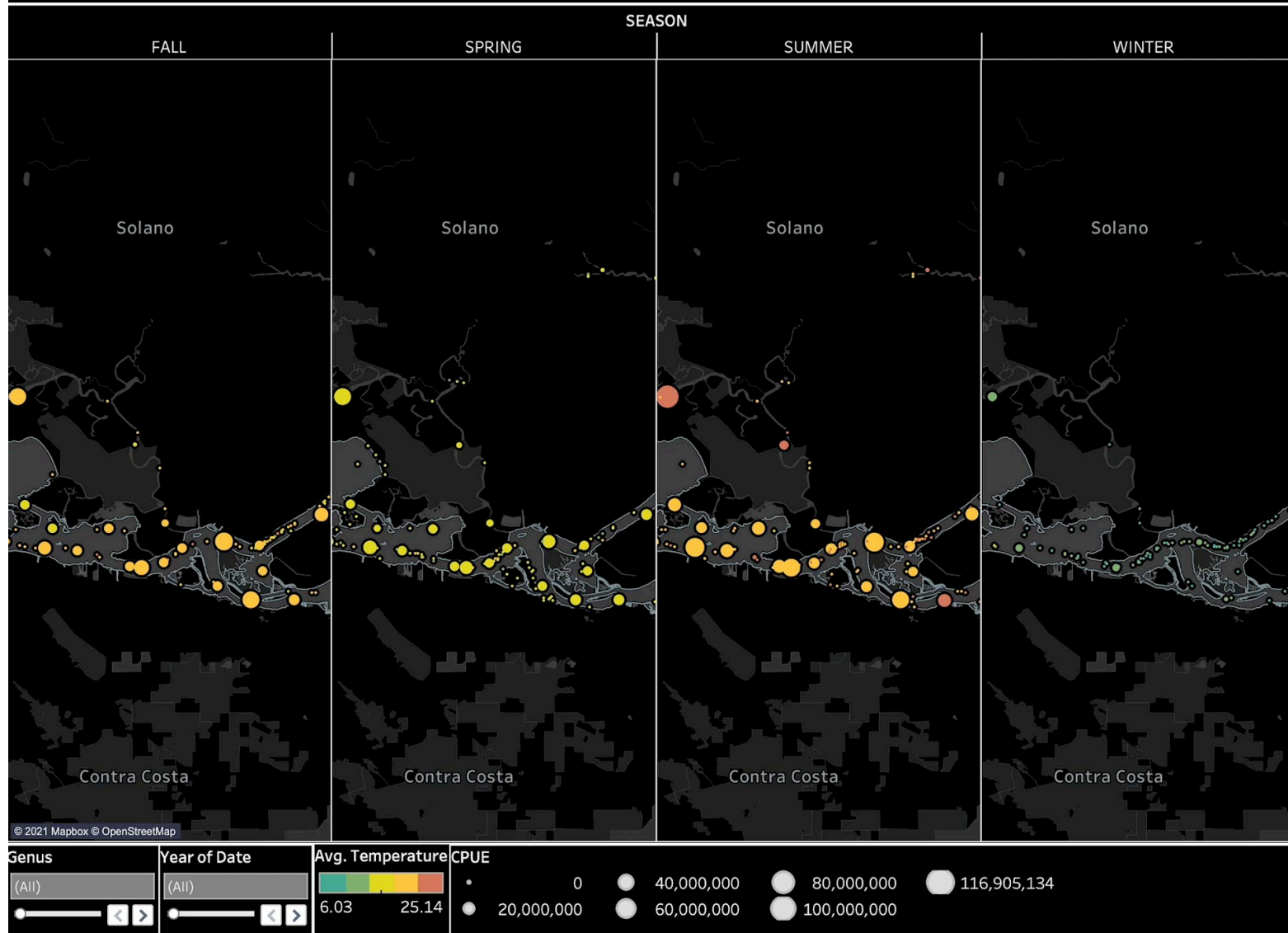
(All)



# Seasonal Zooplankton Populations and Average Water Temperatures

All

All





**THANK YOU**