

9.23.2021

Sea Grant Delta Science and State Policy Fellows

Delta Stewardship Council Meeting

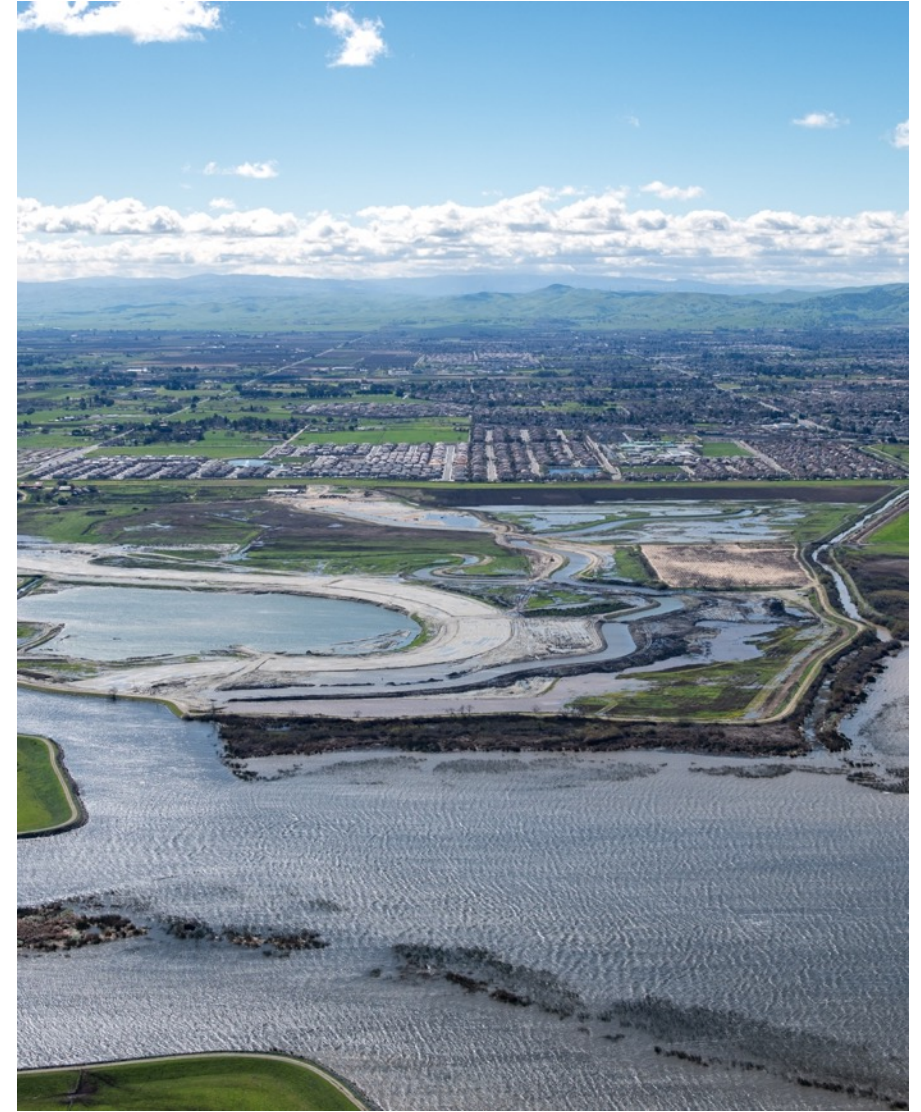


Delta
Science
Program

DELTA STEWARDSHIP COUNCIL

Sea Grant Delta Science & State Policy Fellows

- Background
- Delta Science Fellows Program
- State Policy Fellows
- Requested Action



Background

- Long-standing Fellowship Funding Partnership between Delta Science Program & CA Sea Grant
 - Supports Delta Science Program mission which includes funding research
 - 107 graduate and post-doctoral Delta Science Fellows since 2003
 - 25 State Policy Fellows since 2013
- California Sea Grant
 - Largest of 34 nationwide NOAA Sea Grant College Programs
 - Administered by UCSD Scripps Institution of Oceanography, La Jolla
 - Sponsors and administers scientific research, fellowships, and panels of science advisors

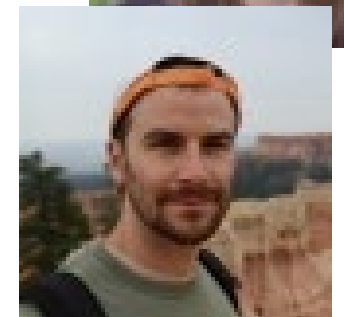
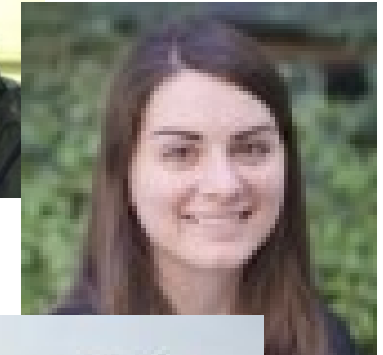
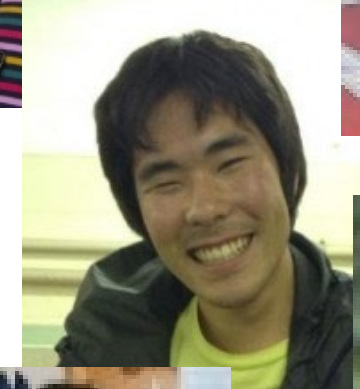
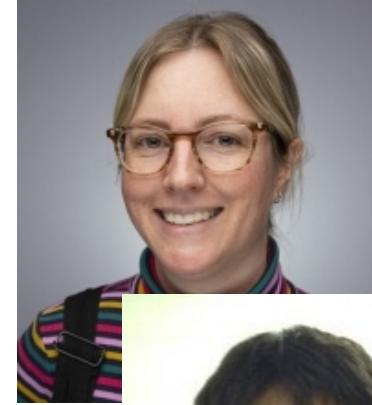


**Delta
Stewardship
Council**

A CALIFORNIA STATE AGENCY

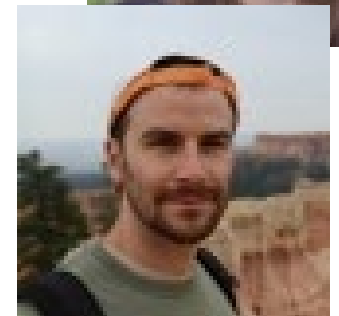
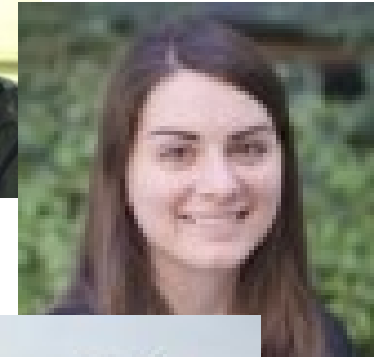
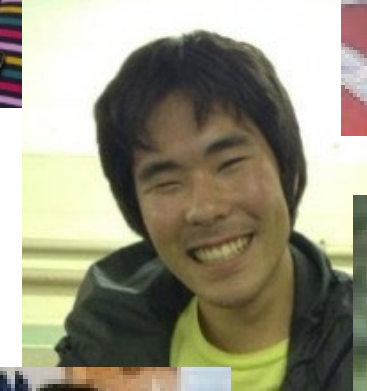
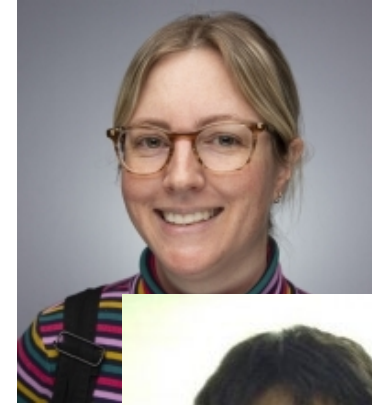
Delta Science Fellows Program

- Next generation Delta scientists work with academic and community mentors on high priority science actions in 2017-2021 Science Action Agenda
- Research highlights include
 - A new model that can forecast river temperatures in response to stream flow management
 - Increased understanding of fish behavioral responses to stressors associated with drought and climate change
 - Use of remote sensing technology to monitor changes in vegetation in restoration sites
 - Understanding Delta farmers' decision-making and adoption of soil and water management practices



Delta Science Fellows Program

- Next generation Delta scientists work with academic and community mentors on high priority science actions in 2017-2021 Science Action Agenda
- Research highlights include
 - A new model that can forecast river temperatures in response to stream flow management
 - Increased understanding of fish behavioral responses to stressors associated with drought and climate change
 - Use of remote sensing technology to monitor changes in vegetation in restoration sites
 - *Understanding Delta farmers' decision-making and adoption of soil and water management practices*





Jessica Rudnick
*Sea Grant Social
Science Extension
Specialist in the Delta*



Delta Science Fellowship 2017–2019

Understanding Delta farmers' decision-making and adoption of soil and water management practices

- Interviewed and surveyed Delta farmers on drivers of farm management decision-making
- Partnered with UC Cooperative Extension Delta Crops advisor, San Joaquin County and Delta Water Quality Coalition and Delta county Resource Conservation Districts
- Developed skills and appreciation for applied research, extension and outreach, and working on complex social-ecological challenges.... Which inspired my motivation to pursue extension career path and to apply for DSC-CASG extension specialist position!

State Policy Fellows

- Recent MS or PhD graduates interested in exploring a career path in the public sector at the science-policy interface
- State Policy Fellows work with Council staff in the Science and Planning Divisions for 12 months on high priority tasks



Karen Gutierrez

Science Communication,
Synthesis, & Decision
Support



Emily Ryznar

Collaborative Science
and Peer Review



Jennica Moffat

Science Based Adaptive
Management



Sarah Farnsworth

Planning and
Performance

Council Fellow in the Science Communication, Synthesis, & Decision Support Unit, *Karen Gutierrez*

Lead Scientist Reports

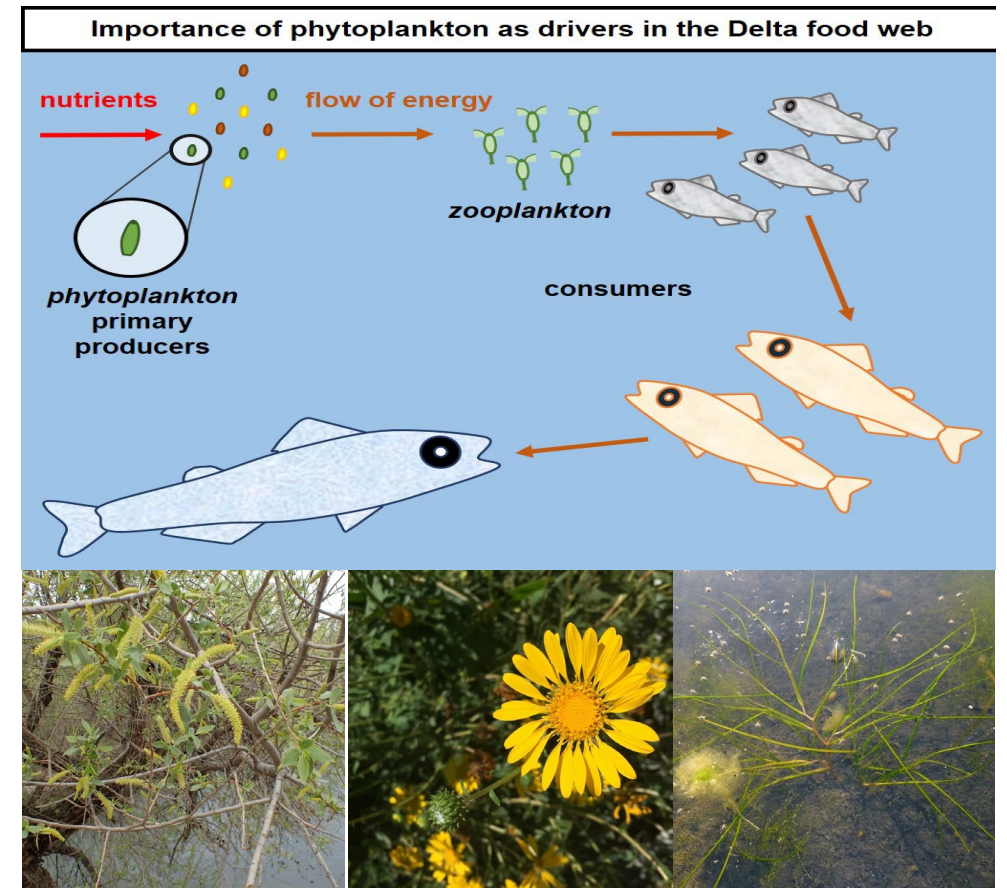
Collaborate with Dr. Laurel Larsen to brainstorm and draft topics for upcoming Lead Scientist Report.

Science Friday Posts

Put together social media posts for Science Friday series. Get creative with topics, writing, and visuals!

Fall Brown Bag Series

Coordinate and organize Environmental Justice-themed brown bag talk series, a joint effort of the Delta Science Program and California Sea Grant.



Council Fellow in the Collaborative Science and Peer Review Unit, *Emily Ryznar*

Science Funding

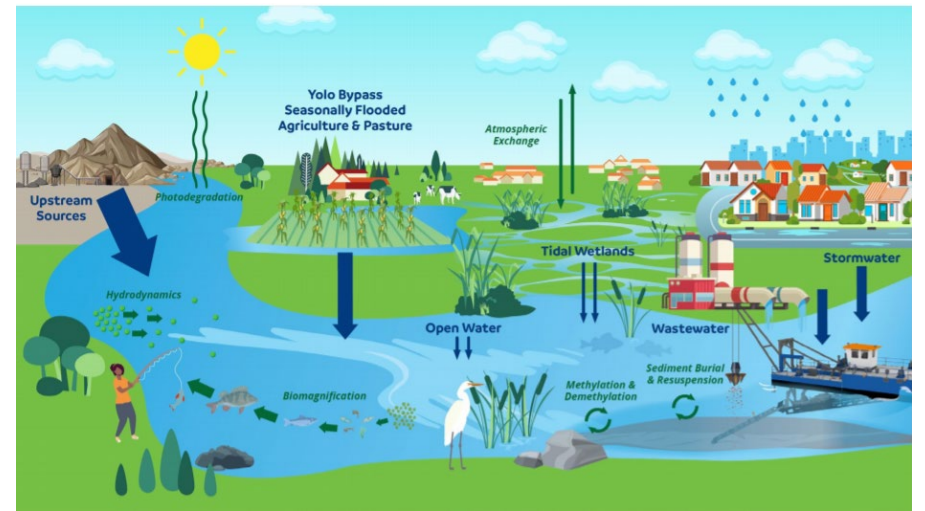
Help coordinate proposal review and selection of high-priority Delta science, communicate selections, and manage contracts

Peer Review

Facilitate peer review process and communicate findings via information sheets, graphics, and social media

Collaborative science

Aid prioritization of Science Actions and solicitation of stakeholder input for Science Action Agenda, facilitate Delta Science Plan draft



Council Fellow in the Science Based Adaptive Management Unit, *Jennica Moffat*

Delta ISB - Monitoring Enterprise Review

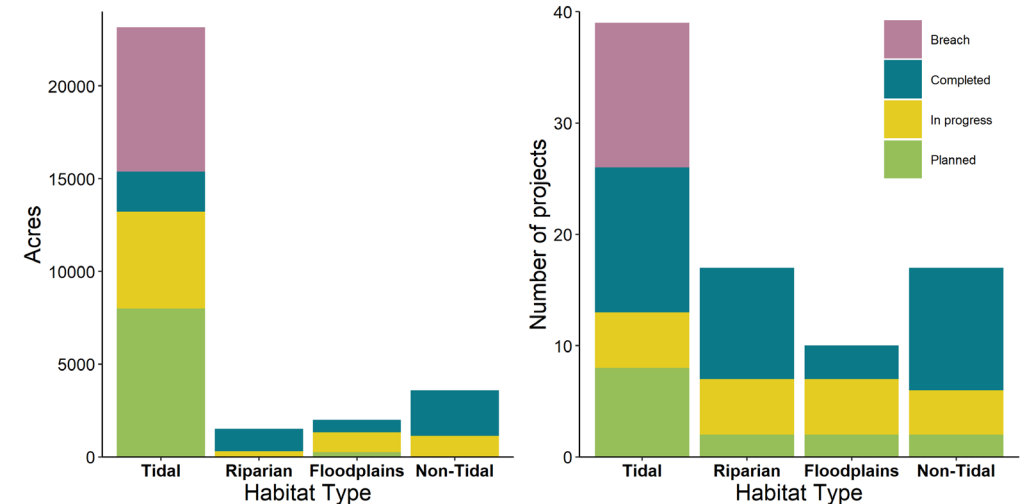
Assisting with editing and writing sections of the report. Conducting interviews, synthesizing results, producing figures.

Symposium: Adapting Restoration for a Changing Climate

Helping to plan a symposium on restoration in the context of climate change in the SF Estuary.

Restoration Synthesis

Restoration acreage analysis: quantifying and summarizing restoration to date in the Delta and Suisun Marsh.



Council Fellow in the Planning and Performance Division, *Sarah Farnsworth*

Covered Actions

Review weekly CEQA submissions to address potential covered actions and help with the review process

Delta Adapts

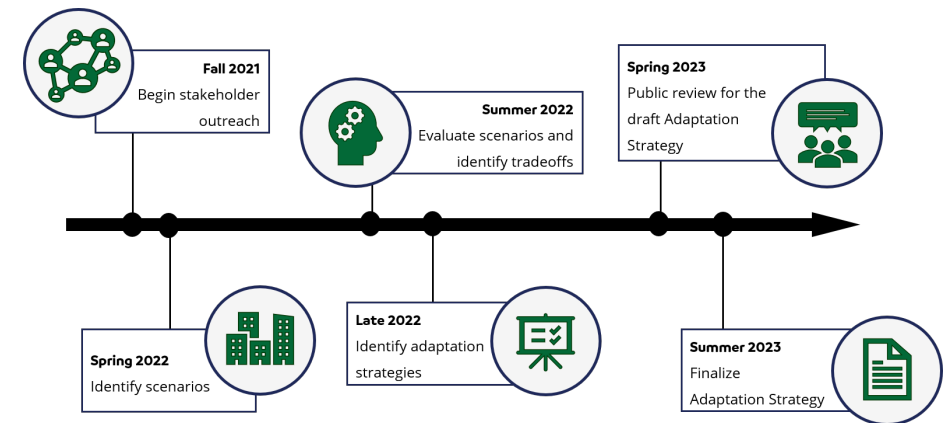
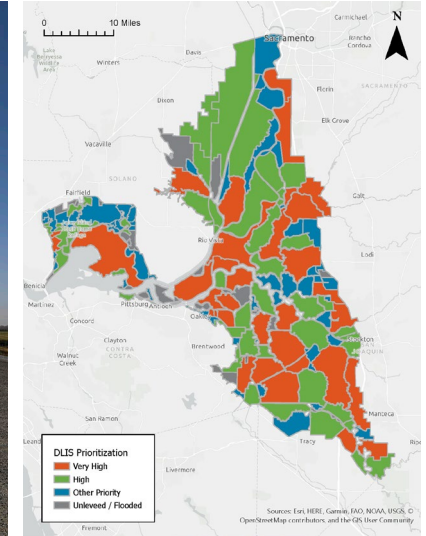
Assist with stakeholder outreach and developing the approach to climate adaptation and resilience in the Delta

Environmental Justice White Paper

Help compile public comment and literature research and assist with stakeholder outreach

Delta Levees Investment Strategy

Use ArcGIS software to develop maps and informative materials to communicate the DLIS



Requested Action

- Approve new contract with UCSD California Sea Grant in the amount of \$2,069,146 for a contract term of November 1, 2021 – October 31, 2024. Contract will support
 - 2022 Delta Science Fellows Program: 8 to 10 graduate and post-doctoral researchers
 - 2022-23 State Policy Fellows: 4 in 2022 and 5 in 2023. The additional State Policy Fellow in 2023 will support the Interagency Ecological Program Lead Scientist.

A large concrete bridge with multiple pillars spans across a wide body of water. The sky is overcast with grey clouds. The foreground shows some dry grass. The word "QUESTIONS?" is written in large, white, bold, sans-serif font across the center of the image.

QUESTIONS?