

SMITH CANAL GATE PROJECT

A COMPONENT OF THE
LOWER SAN JOAQUIN RIVER PROJECT

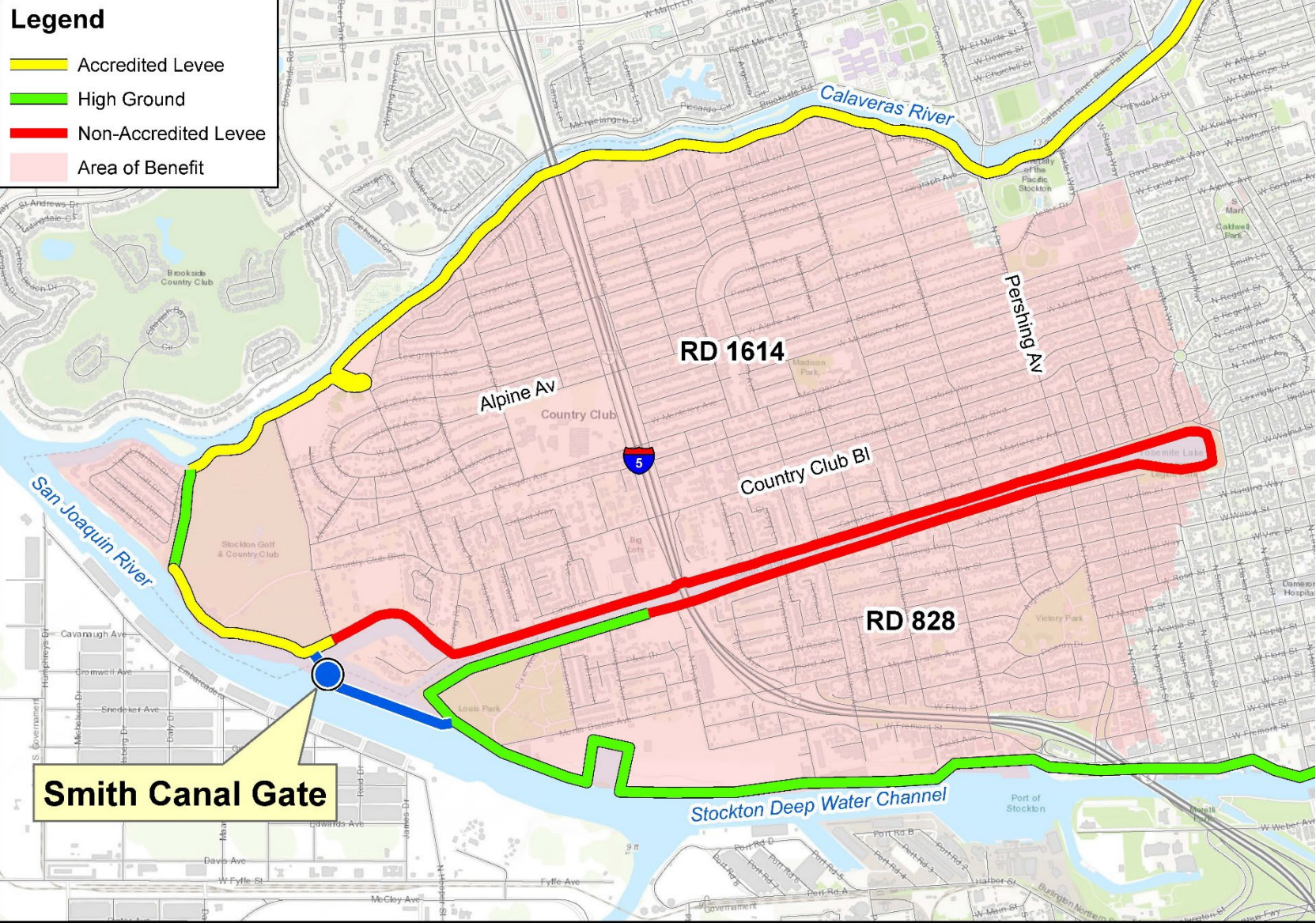
PRESENTATION TO DELTA STEWARDSHIP COUNCIL

JUNE 22, 2023

Project Background

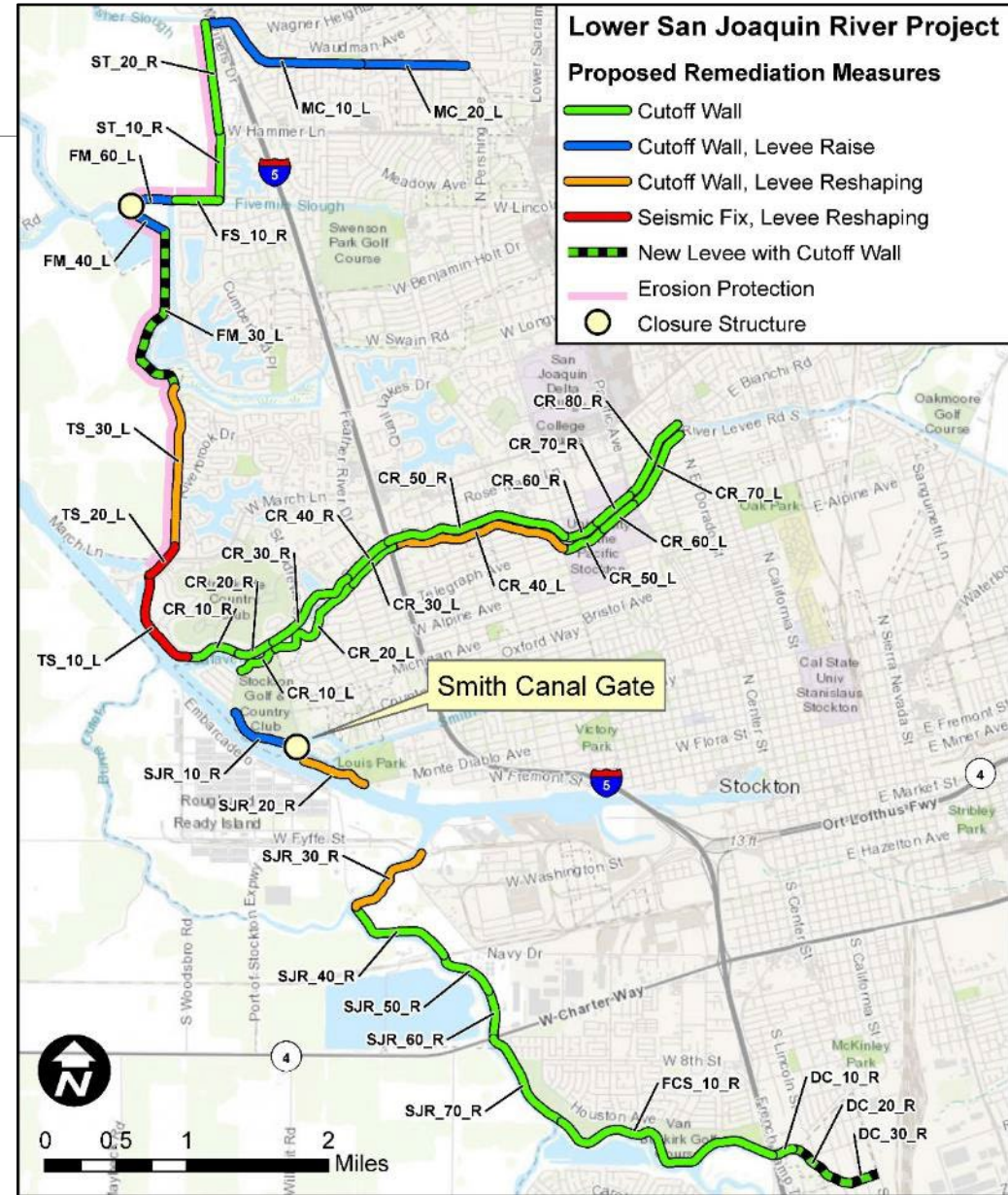
Legend

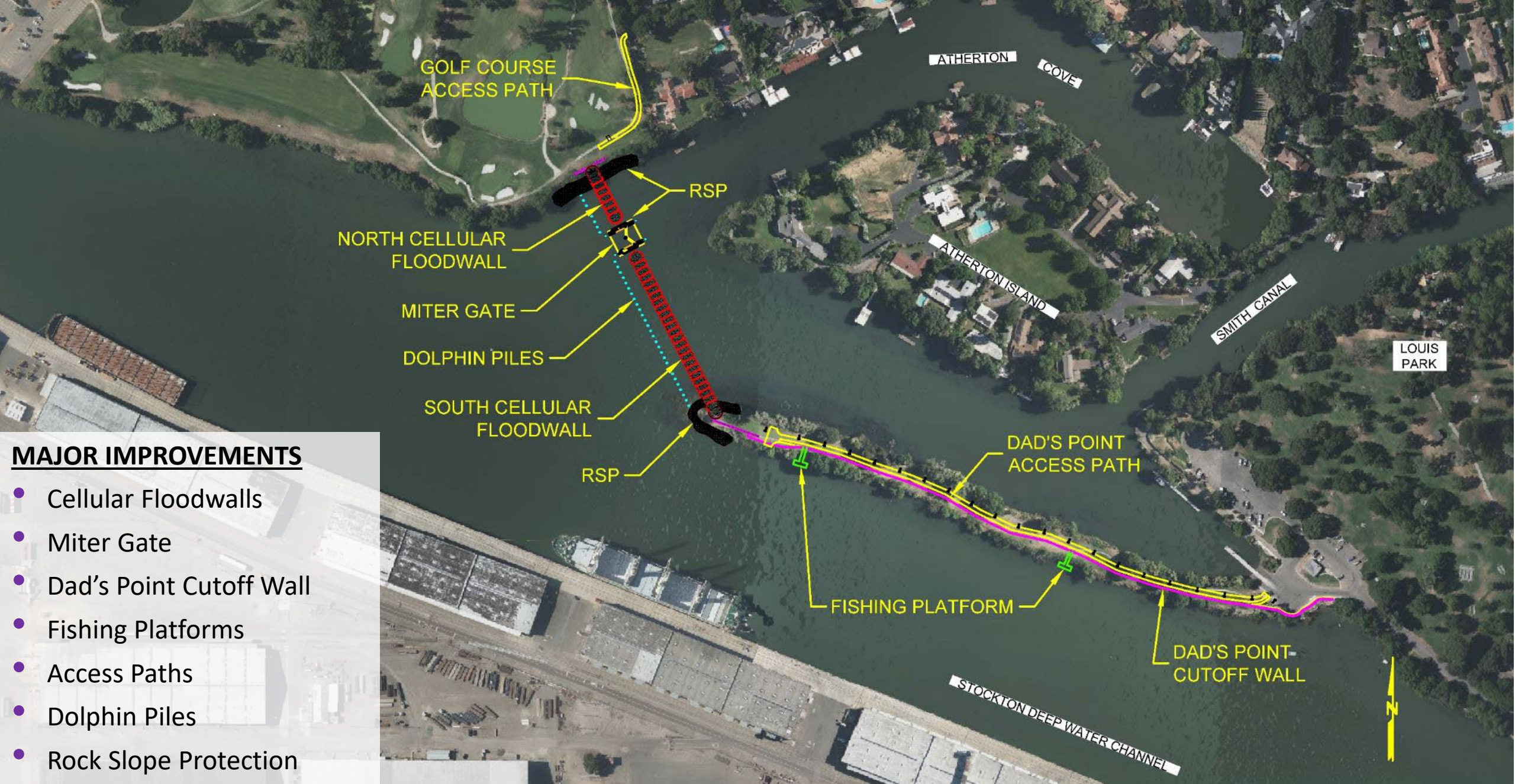
- Accredited Levee
- High Ground
- Non-Accredited Levee
- Area of Benefit



- Smith Canal is navigable and tidally influenced
- Smith Canal levees are heavily encroached by residential structures
- Project will prevent flooding from Delta during high water events and
- Project protects a large portion of Central Stockton
- DSC completed appeals action & Consistency Determination for Project in 2019

Lower San Joaquin River Project





GOLF COURSE
ACCESS PATH

RSP

NORTH CELLULAR
FLOODWALL

MITER GATE

DOLPHIN PILES

SOUTH CELLULAR
FLOODWALL

RSP

ATHERTON

COVE

ATHERTON ISLAND

SMITH CANAL

LOUIS
PARK

DAD'S POINT
ACCESS PATH

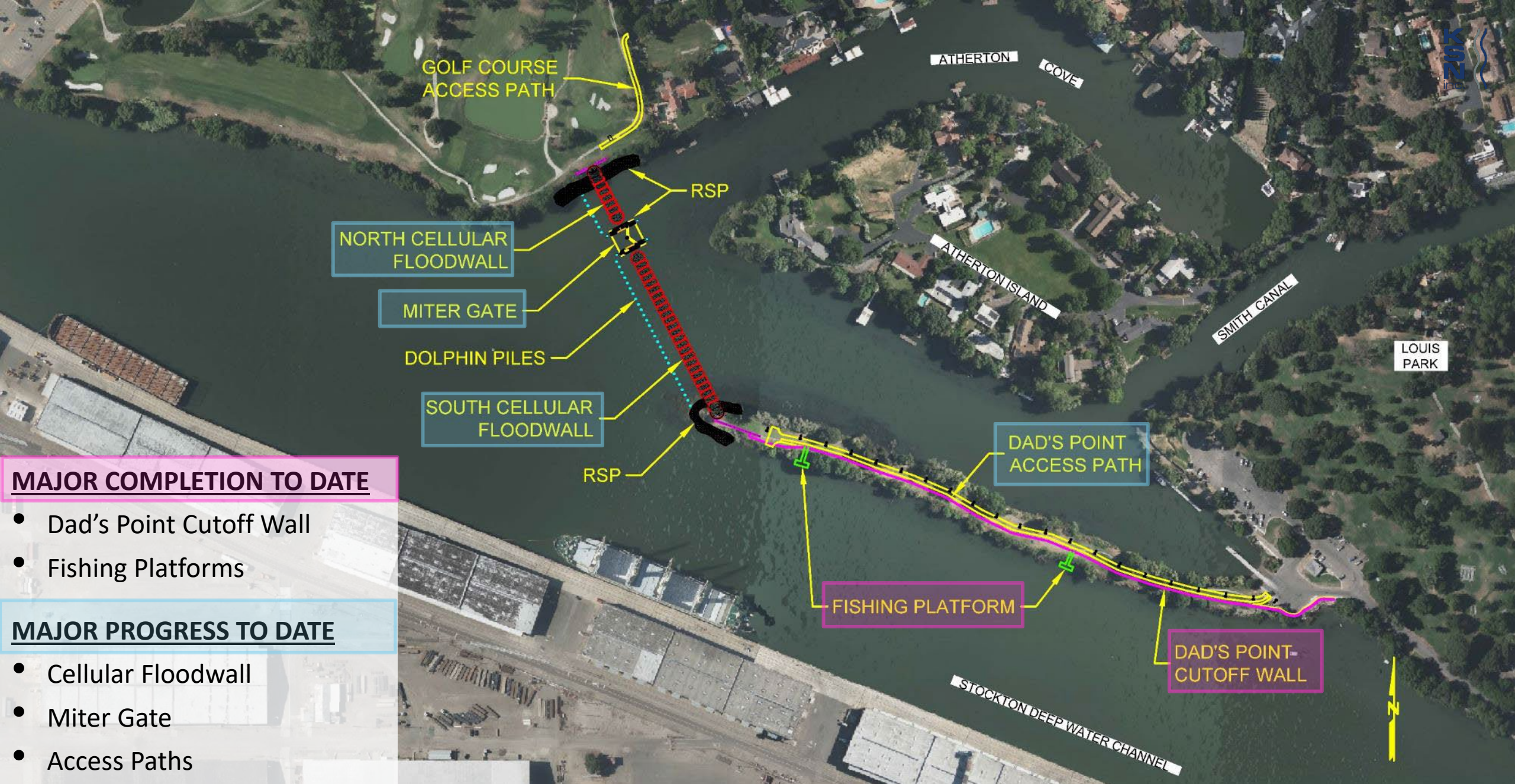
FISHING PLATFORM

DAD'S POINT-
CUTOFF WALL

STOCKTON DEEP WATER CHANNEL

MAJOR IMPROVEMENTS

- Cellular Floodwalls
- Miter Gate
- Dad's Point Cutoff Wall
- Fishing Platforms
- Access Paths
- Dolphin Piles
- Rock Slope Protection



MAJOR COMPLETION TO DATE

- Dad's Point Cutoff Wall
- Fishing Platforms

MAJOR PROGRESS TO DATE

- Cellular Floodwall
- Miter Gate
- Access Paths

CELLULAR FLOODWALL PROGRESS TO DATE



2022

2021

2022

MITER GATE FOUNDATION SEASON 1 – Summer 2020



Foundation Pipe Piles

Seepage Cutoff Wall

Temporary Cofferdam

Closure Pile

SOUTH CELLULAR FLOODWALL SEASON 2 – Summer/Fall 2021

Cofferdam

Pin piles for template

Dad's Point

SOUTH CELLULAR FLOODWALL SEASON 2 – Summer/Fall 2021



Cell A

Cell B

Cell C

Cell D

Cell E

Cofferdam

TEMPORARY TRESTLE SEASON 2 – Fall 2021

Temporary Trestle

Cofferdam

Cell S

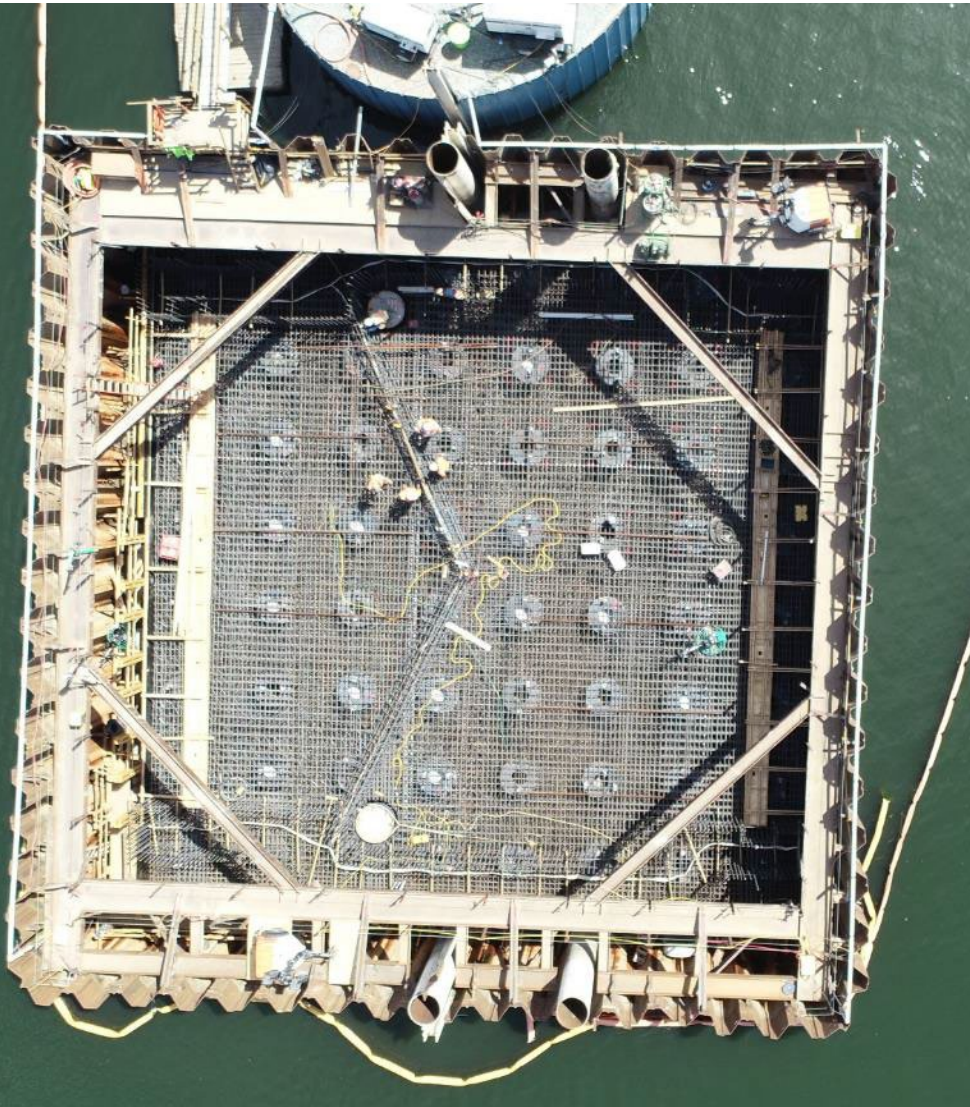
Dad's Point

DAD'S POINT CUTOFF WALL SEASON 2 – Summer/Fall 2021

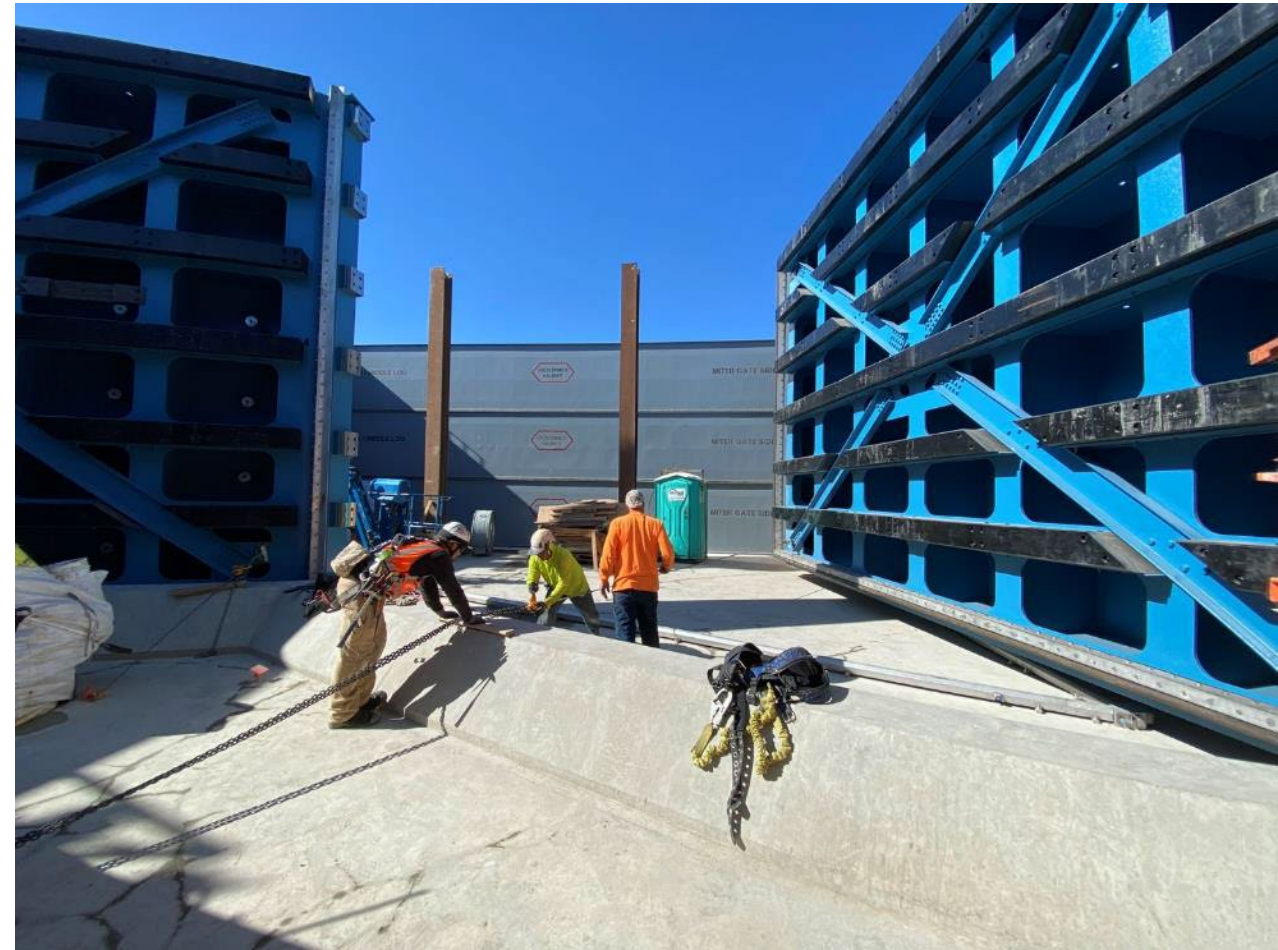
Z-Sheet Piles



MITER GATE FOUNDATION SEASON 3 – Winter/Spring 2022



MITER GATE SEASON 3 – Summer 2022



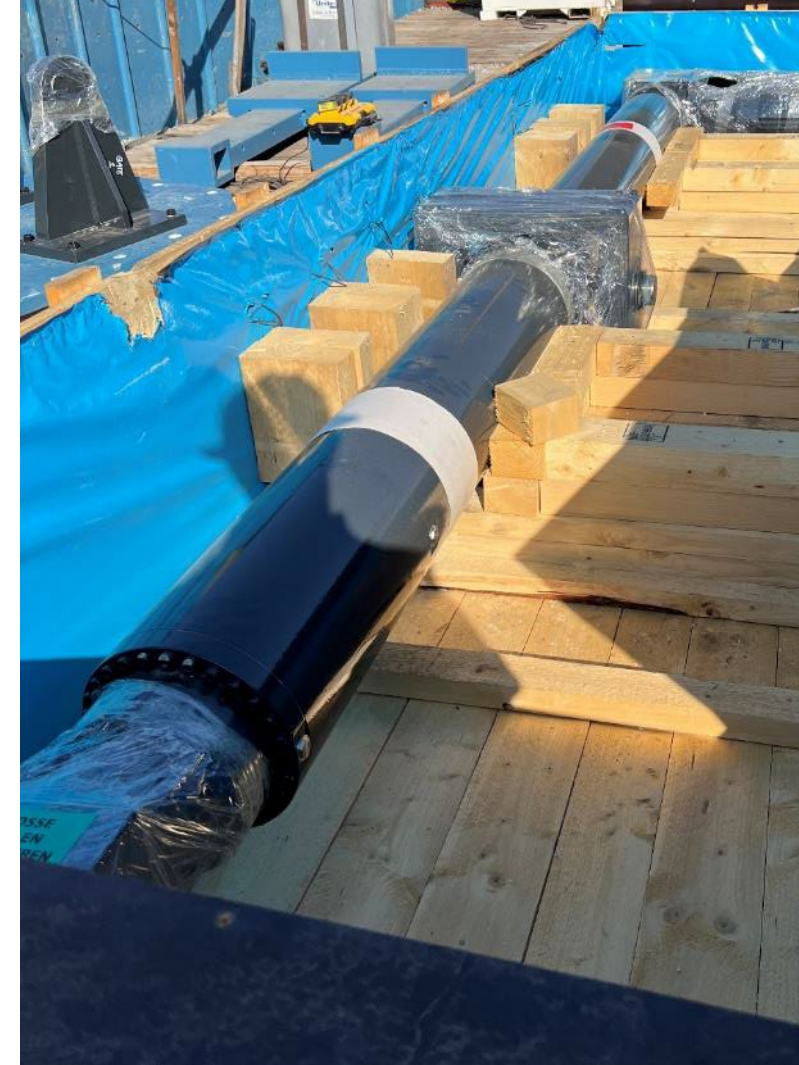
MITER GATE SEASON 3 – Summer 2022



MITER GATE Jet Spray & Pintle



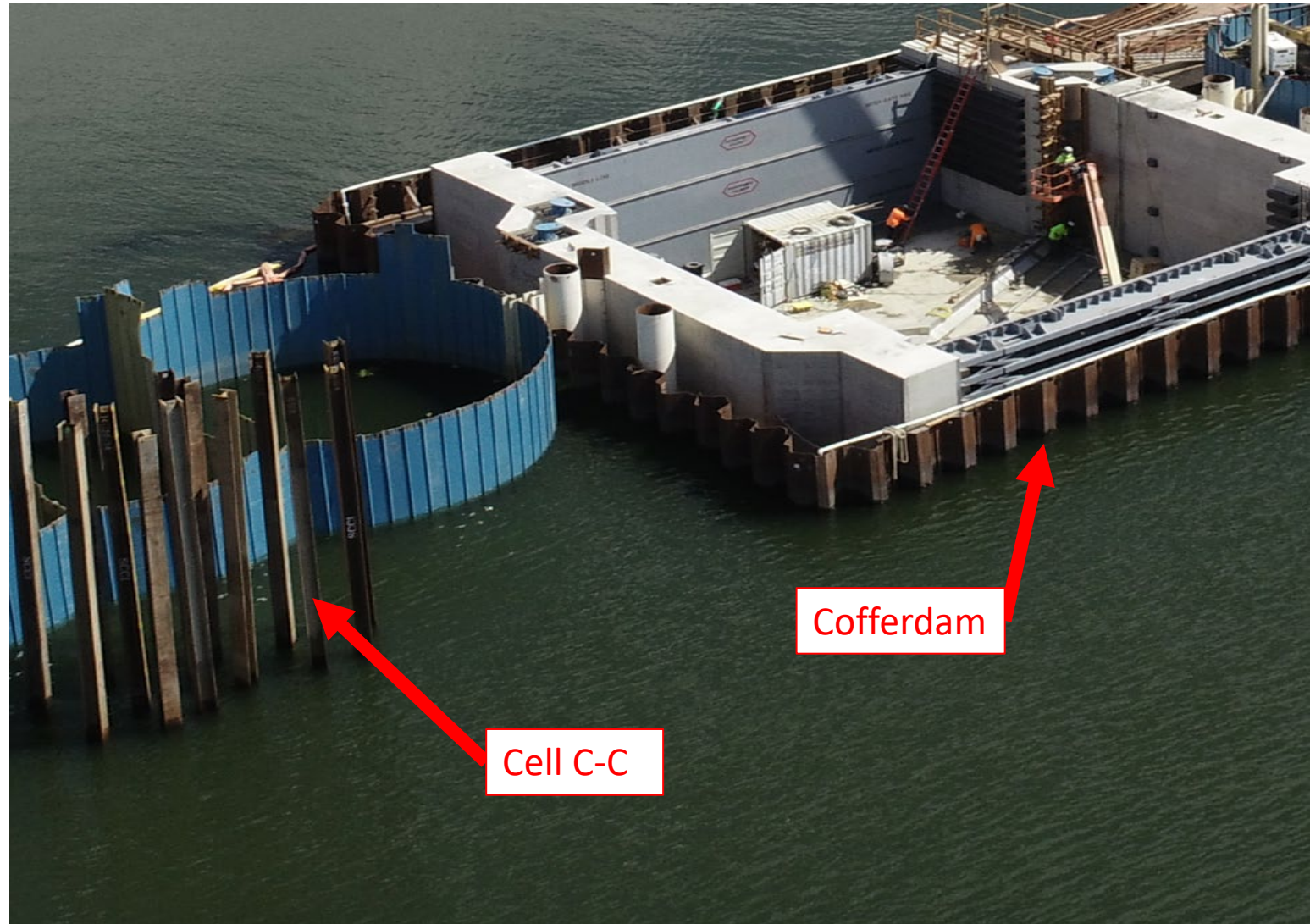
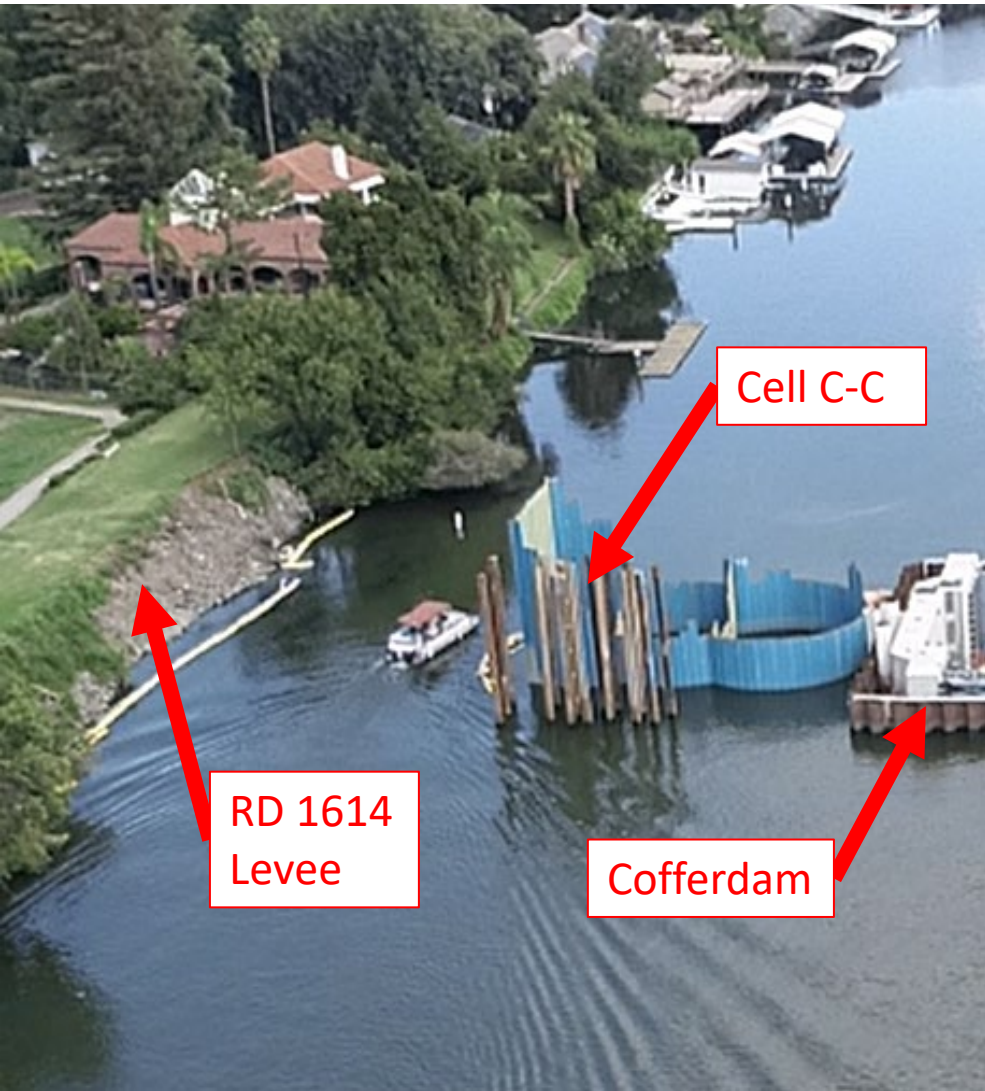
MITER GATE Actuator



MITER GATE Turnbuckles



NORTH CELLULAR FLOODWALL SEASON 3 – Summer 2022



SOUTH CELLULAR FLOODWALL SEASON 3 – Summer/Fall 2022

Cofferdam

Cell Z

DAD'S POINT ACCESS ROAD Winter 2023



DAD'S POINT ACCESS ROAD SEASON 3 – 2022



FISHING PLATFORMS SEASON 3 – 2022

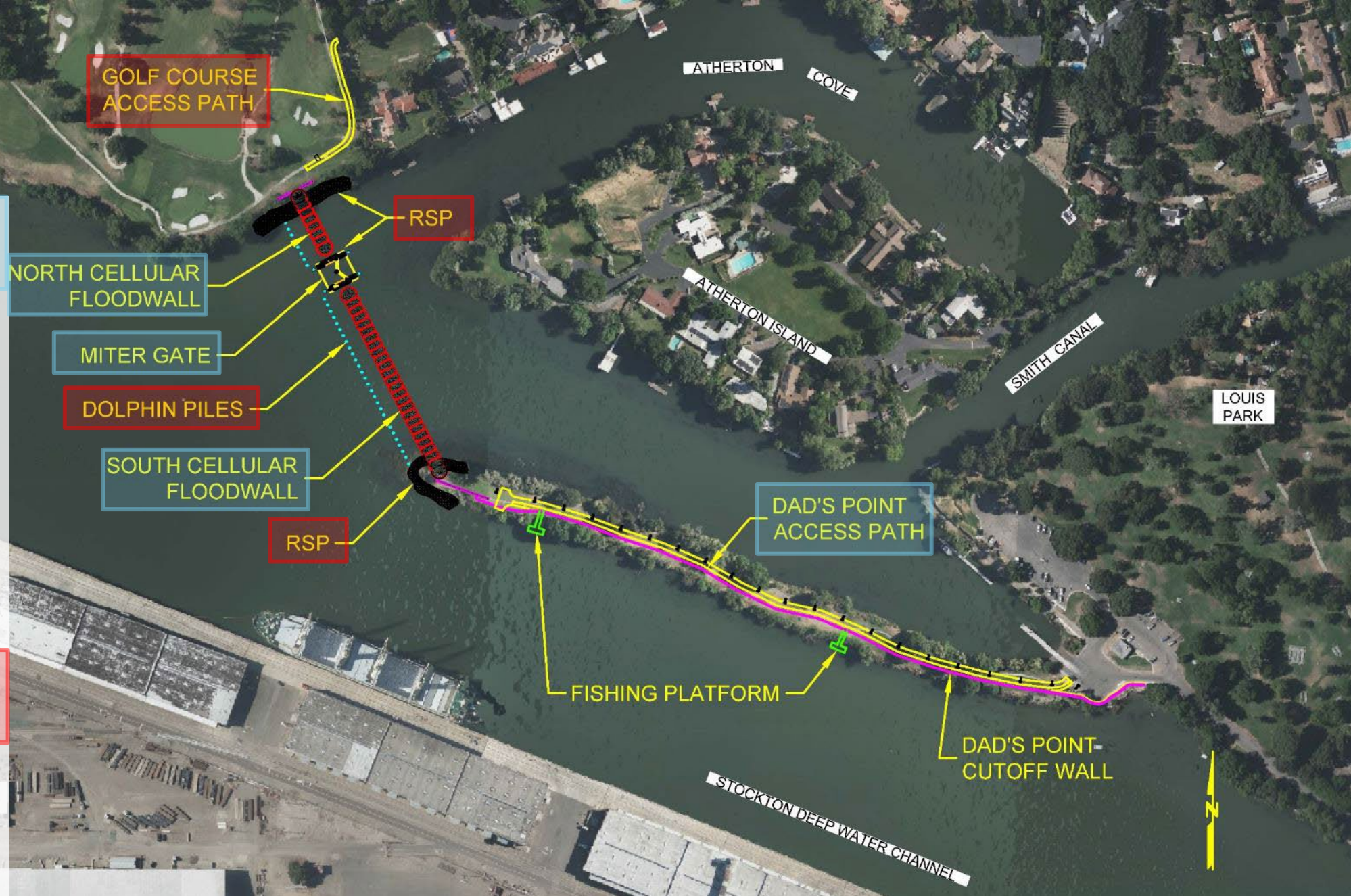


REMAINING ACTIVITIES IN PROGRESS

- North Cellular Floodwall (remaining cells)
- South Cellular Floodwall (remaining driving and repairs to Cells A & B)
- Miter Gate (cofferdam removal, testing, and electrical / controls)

REMAINING ACTIVITIES YET TO COMMENCE

- Access Paths
- Dolphin Piles
- Rock Slope Protection



Season 4 In-Water Activities July 1 – November 30, 2023

**Complete
Pile Driving
at
South
Cellular
Floodwall**

**Repairs to
Cells A & B**

**Cofferdam
Removal
at
Miter Gate**

**Remaining
Cells
at
North
Cellular
Floodwall**

Project Challenges

► Environmental constraints

- In-water work window
 - Only 3 months per year
 - Pile strike limits
 - Water temperature
 - Fish migration
- Nesting birds / Swainson's hawks
- Giant garter snake

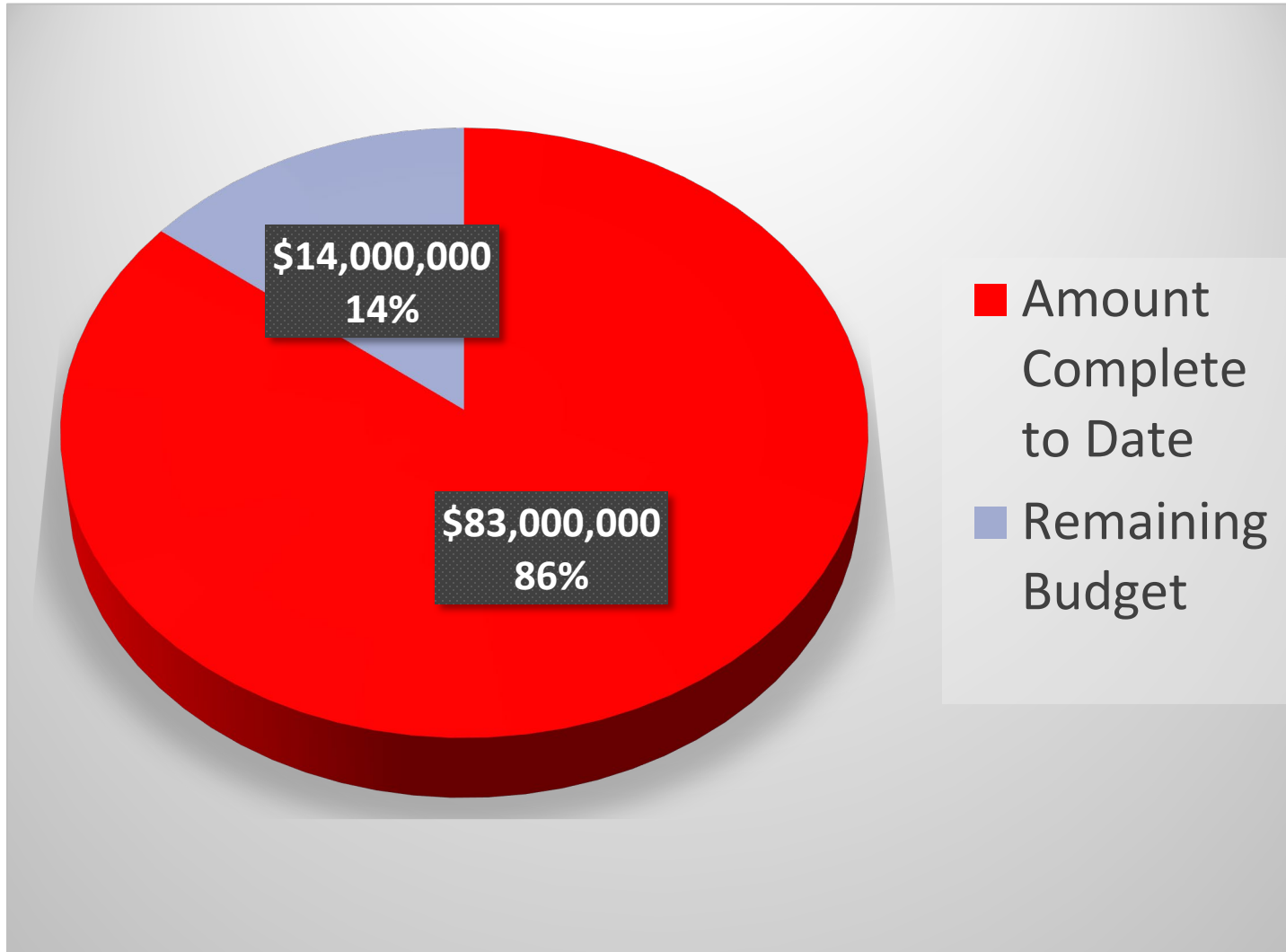
► Inflation / material cost escalation

► Technical complexity

- Unique cellular floodwall with flat sheet piles
- Miter gate intricacy
- Only project of its kind west of the Mississippi River

► COVID-19 / supply chain issue

Project Budget



Current Budget:

\$97 Million



QUESTIONS?