

July 24, 2024

# **‘By The Numbers’ explained**



**Delta  
Stewardship  
Council**

A CALIFORNIA STATE AGENCY

# 'By The Numbers'

A snapshot of current monthly conditions in the CA Delta

**Purpose:** Aid council and public in understanding the status of Delta water management

**Focus:** Key metrics of precipitation, reservoir storage, surface water flows, and water quality (temp & salinity)

**Note:** BTN is not a substitute for the Delta Plan Performance Measures Dashboard

<https://viewperformance.deltacouncil.ca.gov/>

## Precipitation<sup>1,2</sup>

Percent average to 7/24

### Northern Sierra

47.2" 90%



### Central Sierra

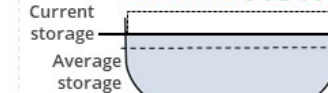
33.0" 84%



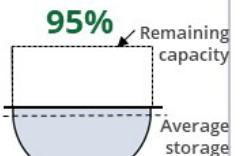
## Reservoir Storage<sup>4</sup>

Percent average to 7/24

### Oroville 119%



### San Luis 95%



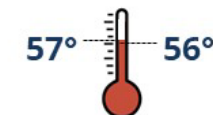
### Shasta 112%



## Water Temperature<sup>3</sup>

In degrees Fahrenheit

### Clear Creek



### Collinsville



### Clifton Court Forebay



## Water Flow and Quality<sup>4,5,6</sup>

Flow (cfs) | % of 20 year flow average | Salinity (µS/cm) | (ppm)

### Sacramento River - Freeport

21,137 cfs | 122% 107 µS/cm | 59 ppm

### San Joaquin River - Vernalis

1,039 cfs | 40% 225 µS/cm | 124 ppm

### Combined CVP + SWP - Diversion

8,749 cfs | 100% 194 µS/cm | 106 ppm

<sup>1</sup> <https://go.usa.gov/xQsUc> <sup>2</sup> <https://go.usa.gov/xQsUa> <sup>3</sup> <https://go.usa.gov/xURFU> <sup>4</sup> <https://go.usa.gov/xQsUr> <sup>5</sup> <https://go.usa.gov/xQsU2> <sup>6</sup> <https://go.usa.gov/xQsUT>



# What is CDEC?

## California Data Exchange Center

- Database maintained by DWR
- Hydrologic and climate information
- Composed of sensors from many agencies
- Historical data



### WELCOME TO CALIFORNIA DATA EXCHANGE CENTER

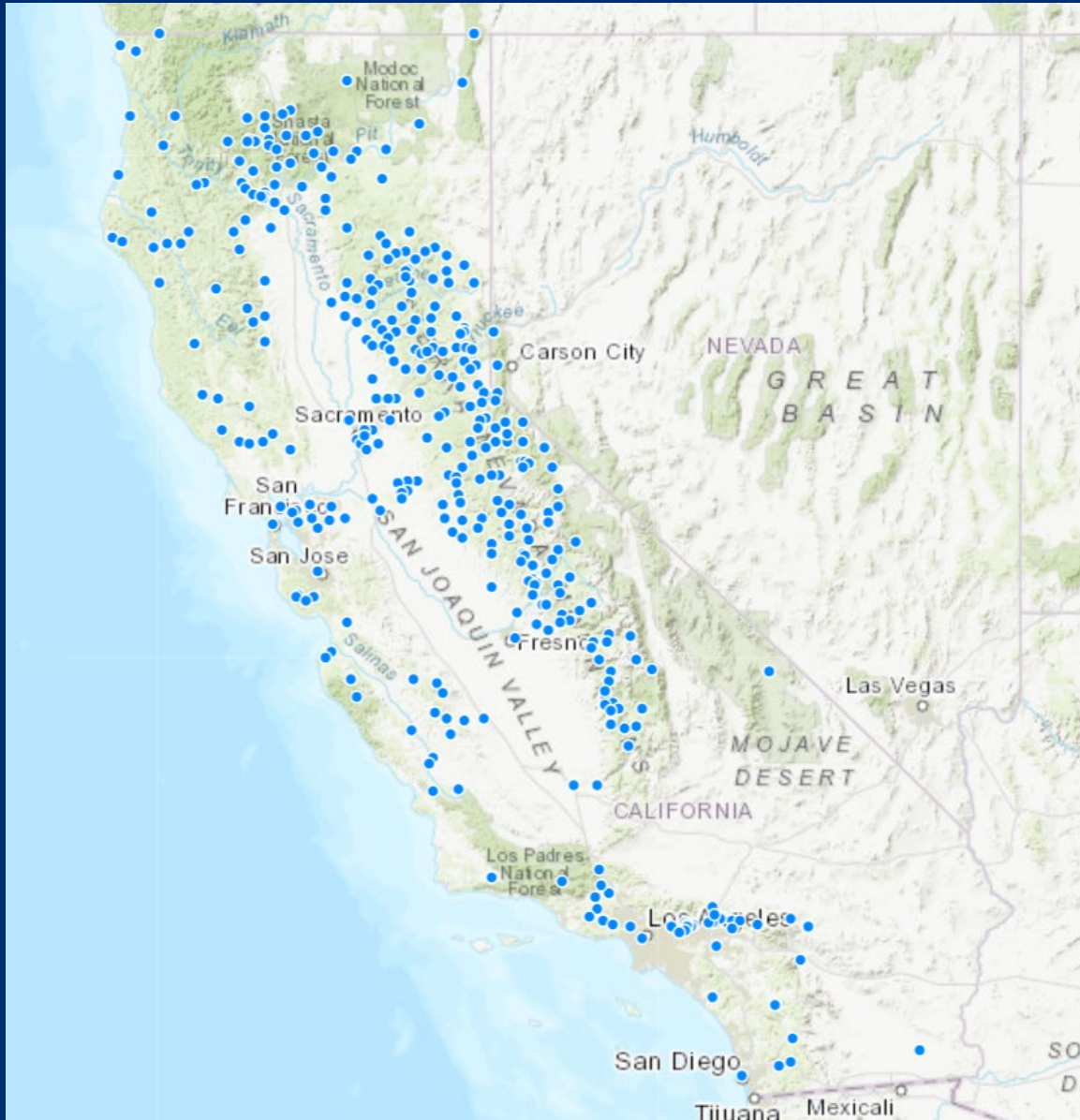
#### CURRENT CONDITIONS

- > [River Conditions](#)
- > [River Guidance Plots](#)
- > [Water Supply](#)
- > [Statewide Water Conditions](#)
- > [Daily Hydrologic and Climate Information Summary](#)
- > [Daily Statewide Hydrologic Update \(Interactive\)](#)
- > [Daily Water Quality Data](#)
- > [California Burn Areas](#)
- > [Current Reports](#)

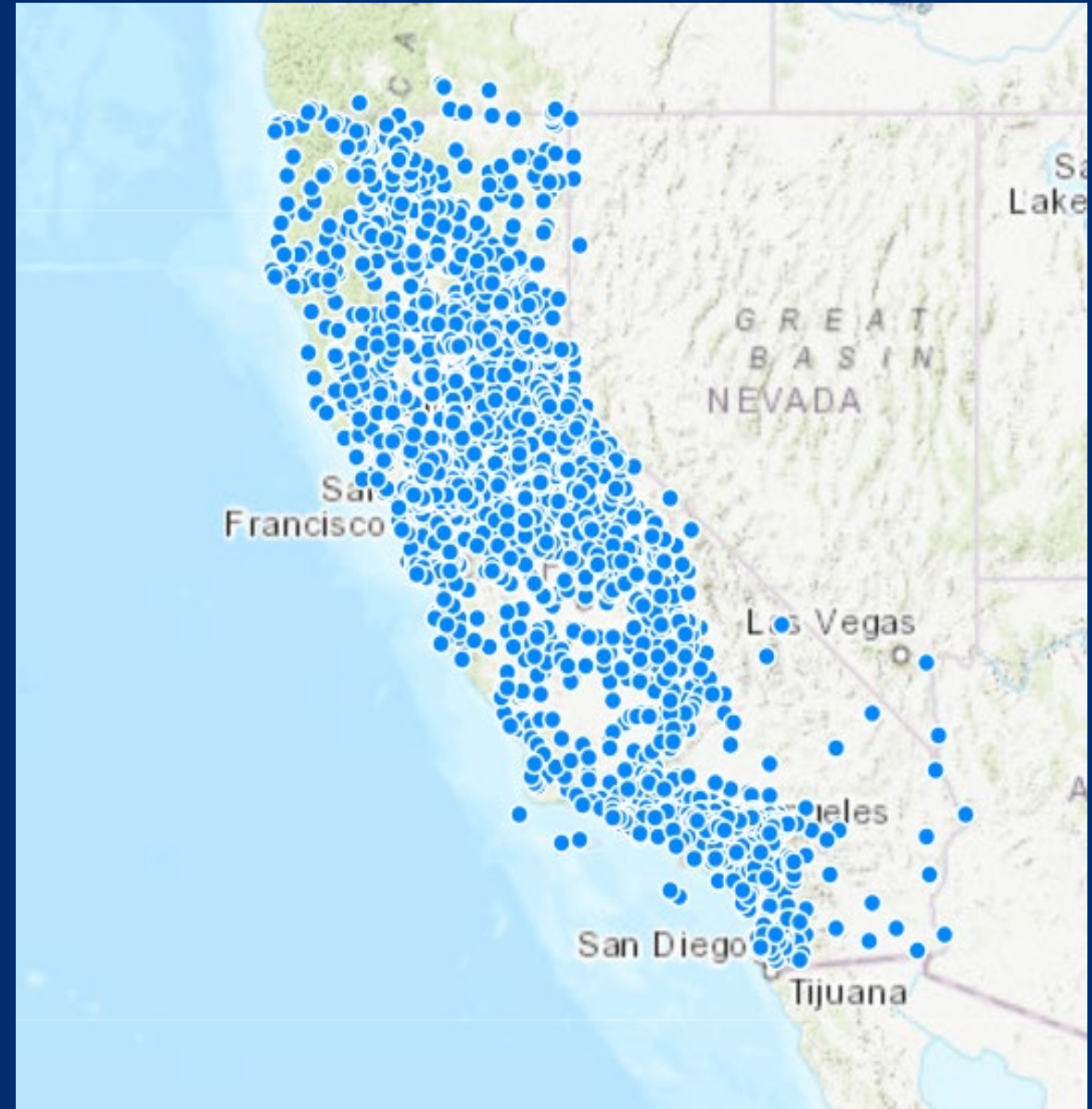
#### MORE INFORMATION

- > [Web Apps API Docs: Real-Time](#) | [Web-Services](#) | [Daily-Monthly](#) **UPDATED**
- > [What's New](#) **UPDATED**
- > [General Information About CDEC](#)
- > [Contact CDEC Staff](#)
- > [Flood System Inspection Reports](#)
- > [Local Maintaining Agency Annual Report](#)
- > [California Cooperative Snow Surveys](#)
- > [Historical data](#)
- > [Other Related Data Sources](#)
- > [CDEC Station Search](#)
- > [CDEC Historical Plotter App](#) **UPDATED**
- > [CDEC Sensor Group Plotter App](#) **NEW**
- > [CDEC Station Locator Map](#)

# Precipitation Stations



# Water Flow and Quality Stations





# CA Reservoirs

- 208 reservoirs in CA record data daily
  - **Shasta** – Largest federal reservoir
  - **Oroville** – Largest state reservoir
  - **San Luis** – Good indicator of S. Delta water supply



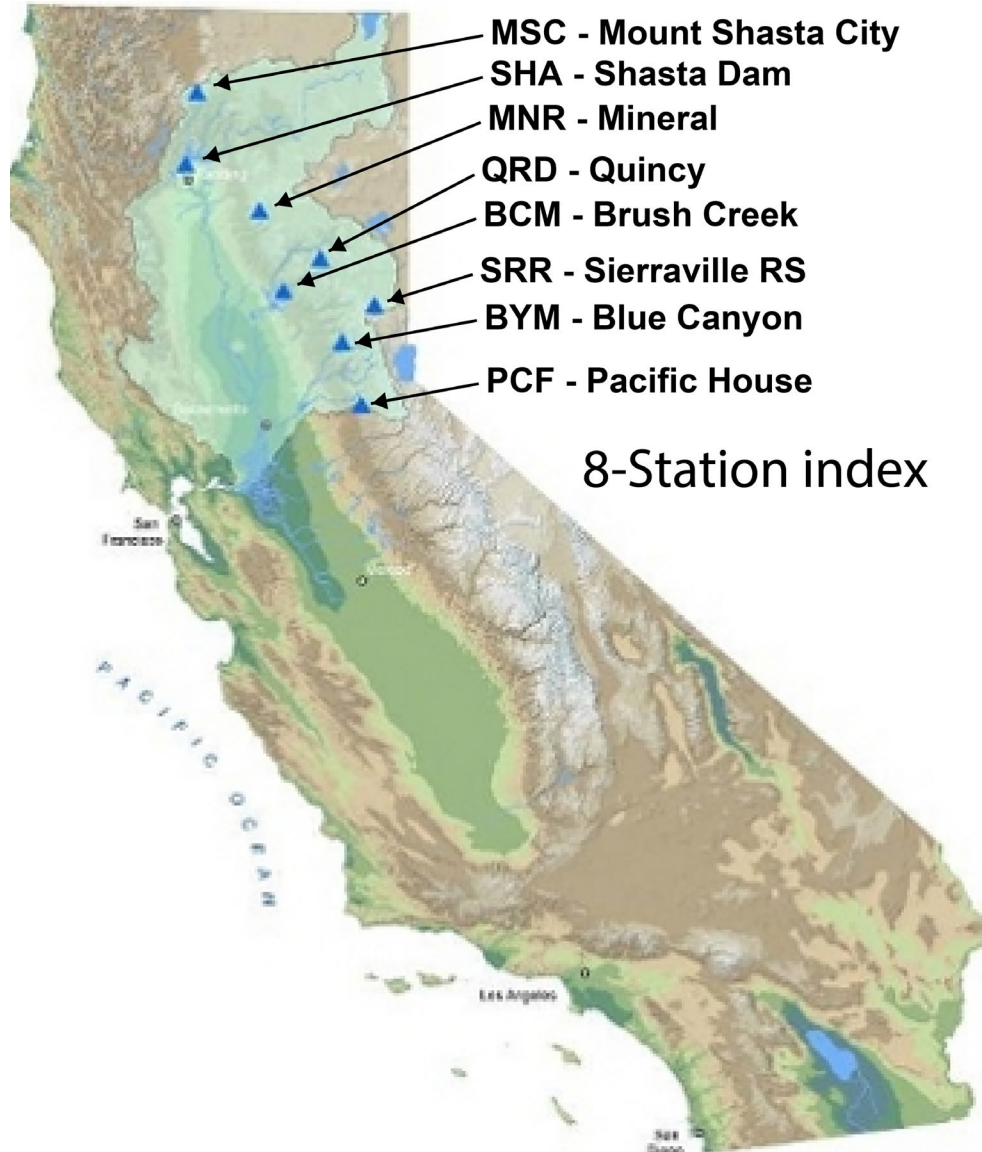
# Snow Pack Stations

- Winter months we report snowpack
- Northern Sierra – 22 stations
- Central Sierra – 37 stations
- State Average – 85 stations





# Precipitation



### Precipitation<sup>1,2</sup>

Percent average to 7/24

#### Northern Sierra



#### Central Sierra



### Water Temperature<sup>3</sup>

In degrees Fahrenheit

#### Clear Creek



#### Collinsville



#### Clifton Court Forebay



### Water Flow and Quality<sup>4,5,6</sup>

Flow (cfs) | % of 20 year flow average Salinity (µS/cm) | (ppm)

#### Sacramento River - Freeport

21,137 cfs | 122% 107 µS/cm | 59 ppm

#### San Joaquin River - Vernalis

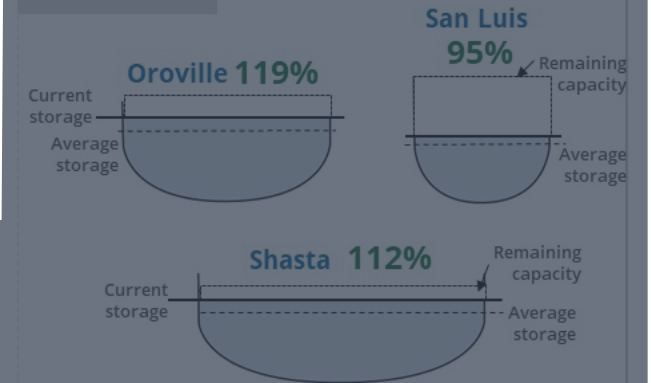
1,039 cfs | 40% 225 µS/cm | 124 ppm

#### Combined CVP + SWP - Diversion

8,749 cfs | 100% 194 µS/cm | 106 ppm

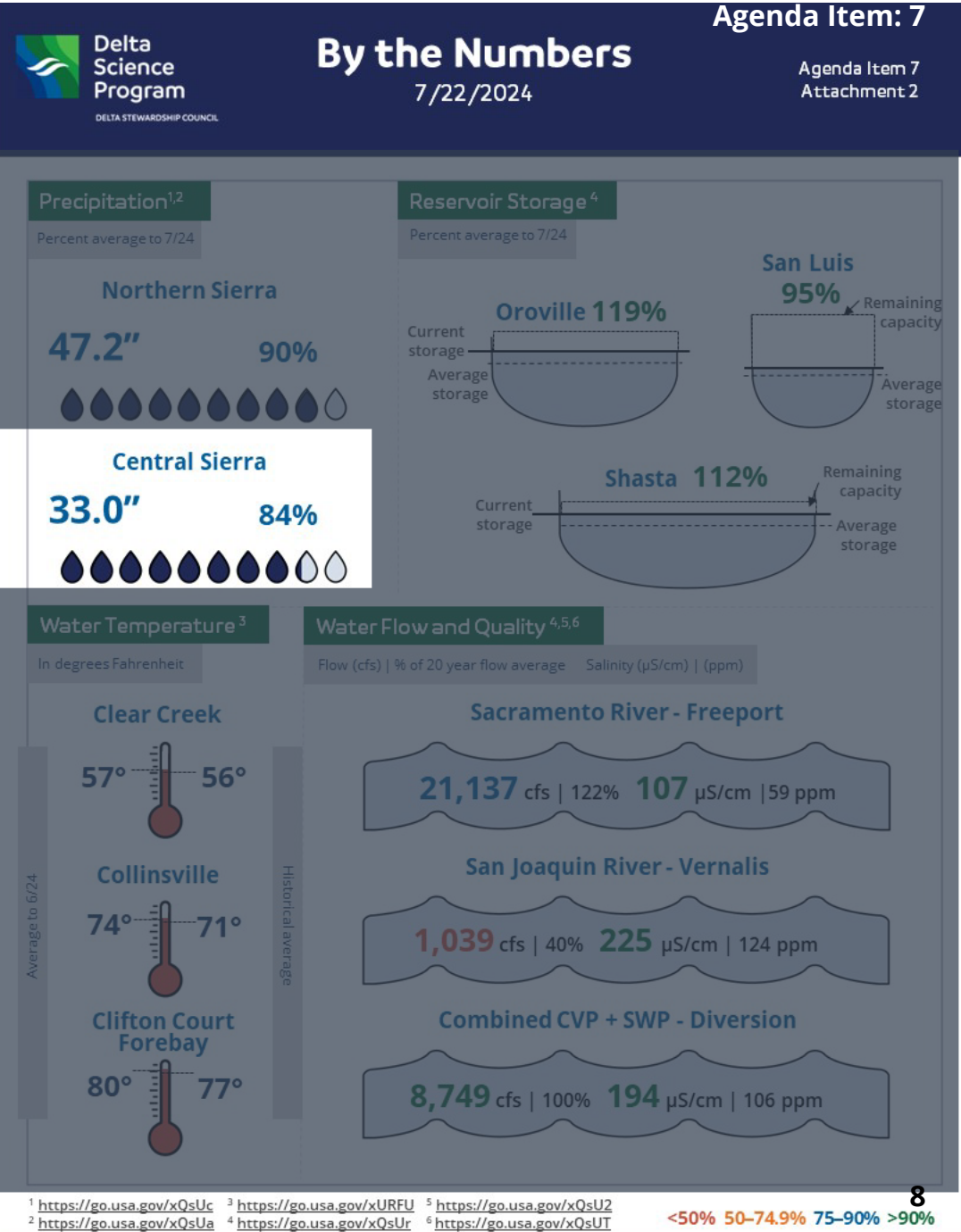
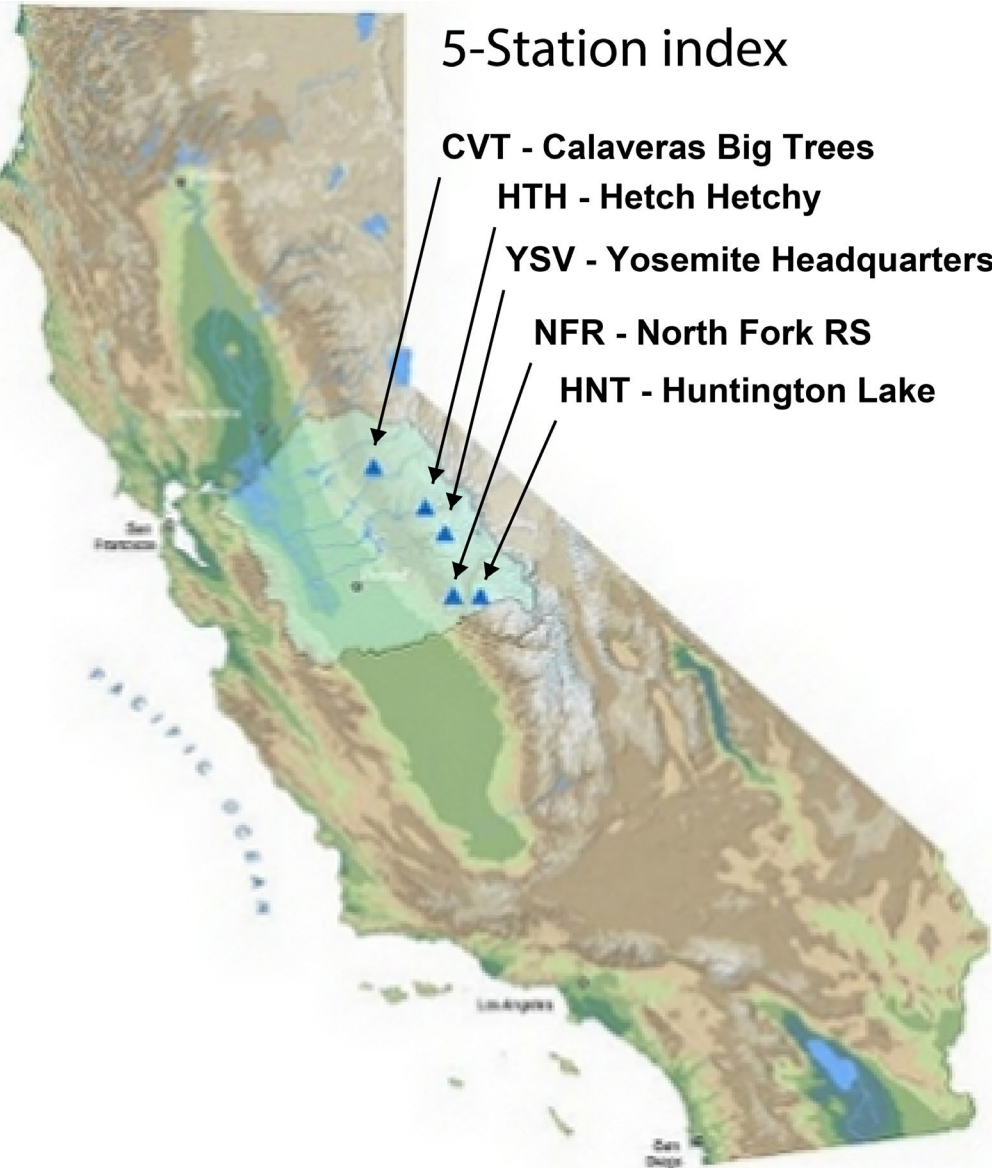
### Reservoir Storage<sup>4</sup>

Percent average to 7/24



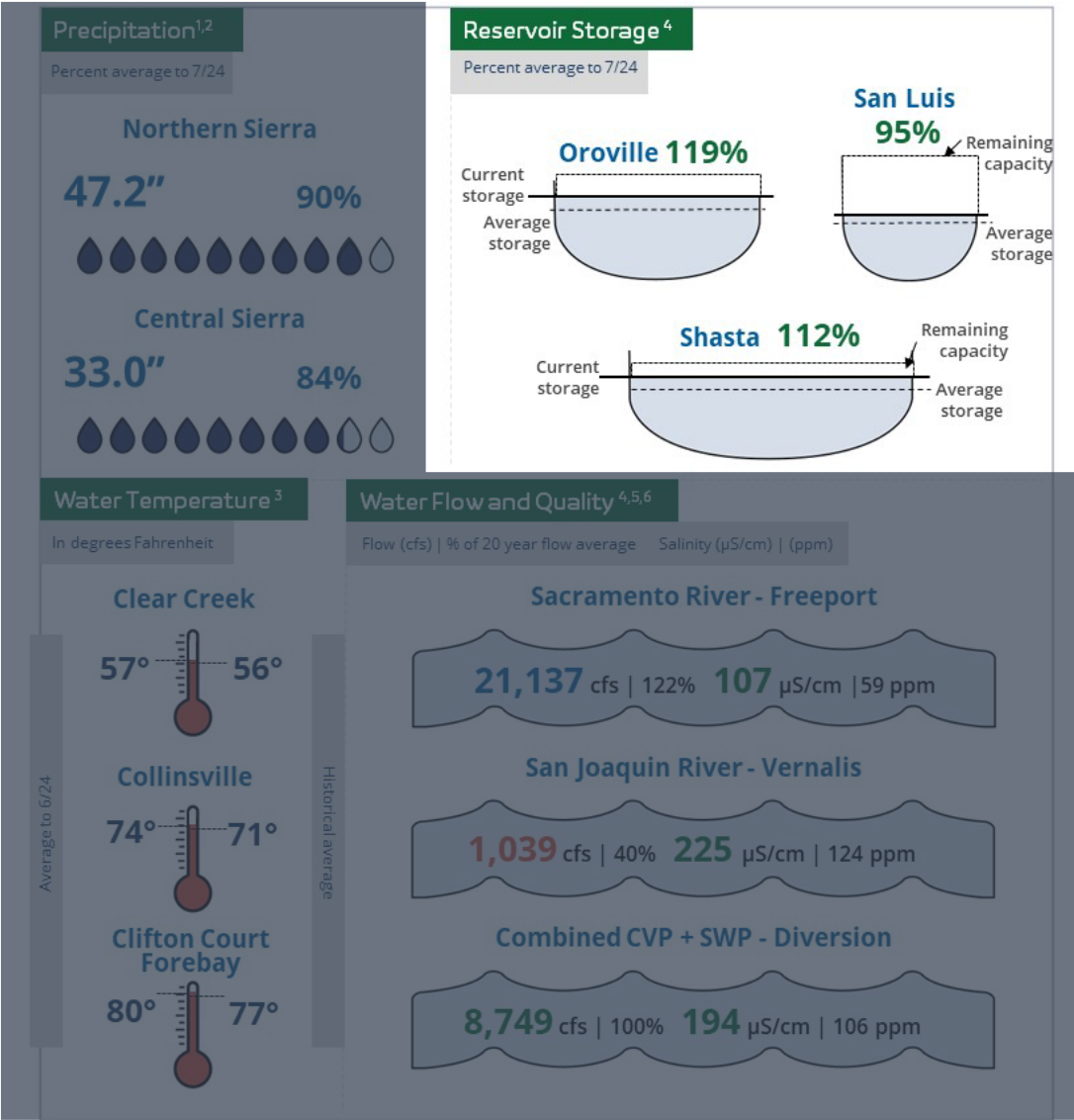
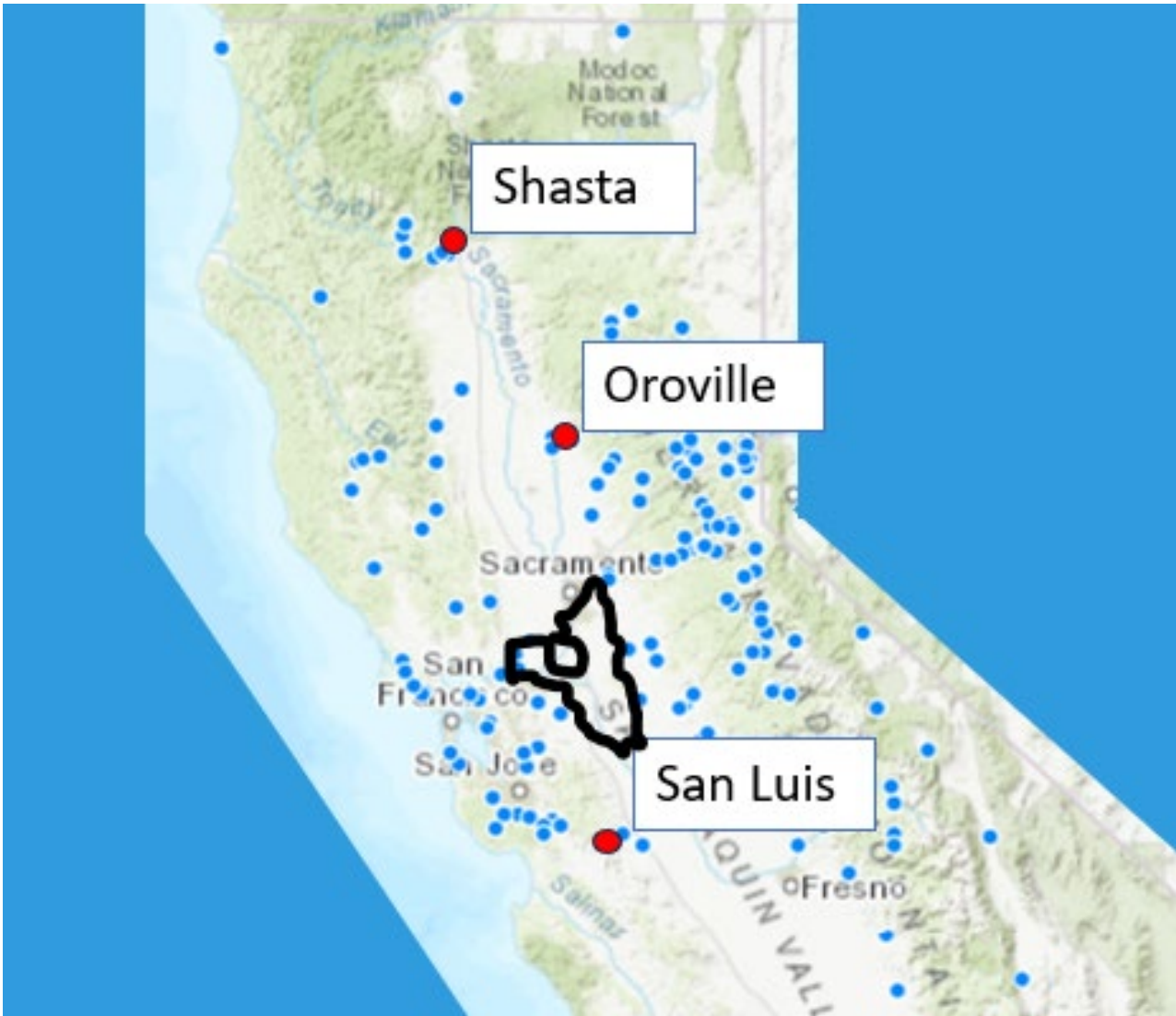
<sup>1</sup> <https://go.usa.gov/xQsUc> <sup>3</sup> <https://go.usa.gov/xURFU> <sup>5</sup> <https://go.usa.gov/xQsU2>  
<sup>2</sup> <https://go.usa.gov/xQsUa> <sup>4</sup> <https://go.usa.gov/xQsUr> <sup>6</sup> <https://go.usa.gov/xQsUT>

# Precipitation





# Reservoir Storage



<sup>1</sup> <https://go.usa.gov/xQsUc>

<sup>2</sup> <https://go.usa.gov/xQsUa>

<sup>3</sup> <https://go.usa.gov/xURFU>

<sup>4</sup> <https://go.usa.gov/xQsUr>

<sup>5</sup> <https://go.usa.gov/xQsU2>

<sup>6</sup> <https://go.usa.gov/xQsUT>

# Water Temperature



Delta Science Program  
DELTA STEWARDSHIP COUNCIL

## By the Numbers

7/22/2024

Agenda Item: 7  
Agenda Item 7  
Attachment 2

Precipitation<sup>1,2</sup>  
Percent average to 7/24

Northern Sierra

47.2" 90%

Central Sierra

33.0" 84%

Reservoir Storage<sup>4</sup>  
Percent average to 7/24

Oroville 119%

San Luis 95%

Shasta 112%

Water Temperature<sup>3</sup>  
In degrees Fahrenheit

Average to 6/24

Clear Creek  
57° 56°

Collinsville  
74° 71°

Clifton Court Forebay  
80° 77°

Historical average

Water Flow and Quality<sup>4,5,6</sup>  
Flow (cfs) | % of 20 year flow average    Salinity (µS/cm) | (ppm)

Sacramento River - Freeport  
21,137 cfs | 122% 107 µS/cm | 59 ppm

San Joaquin River - Vernalis  
1,039 cfs | 40% 225 µS/cm | 124 ppm

Combined CVP + SWP - Diversion  
8,749 cfs | 100% 194 µS/cm | 106 ppm

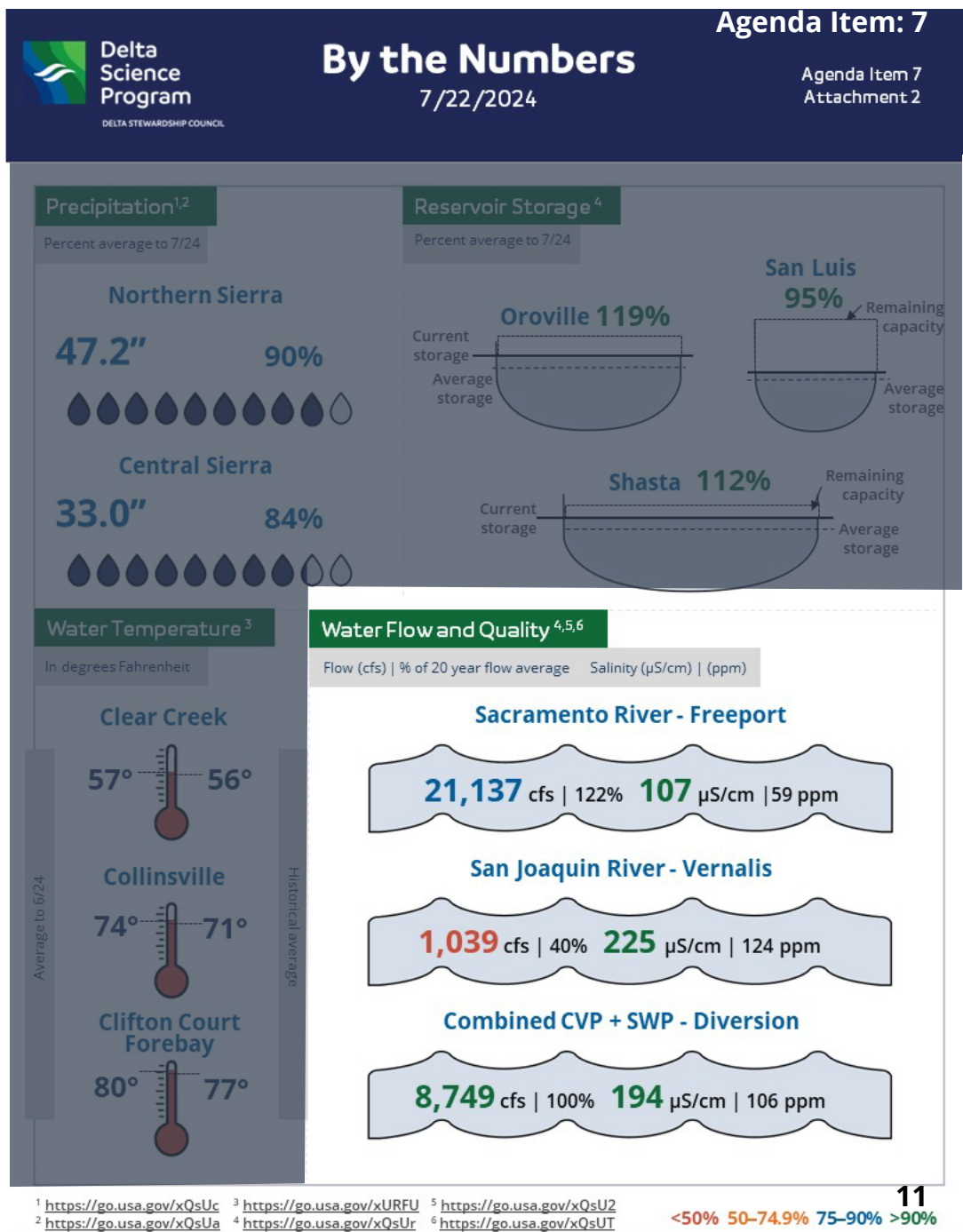
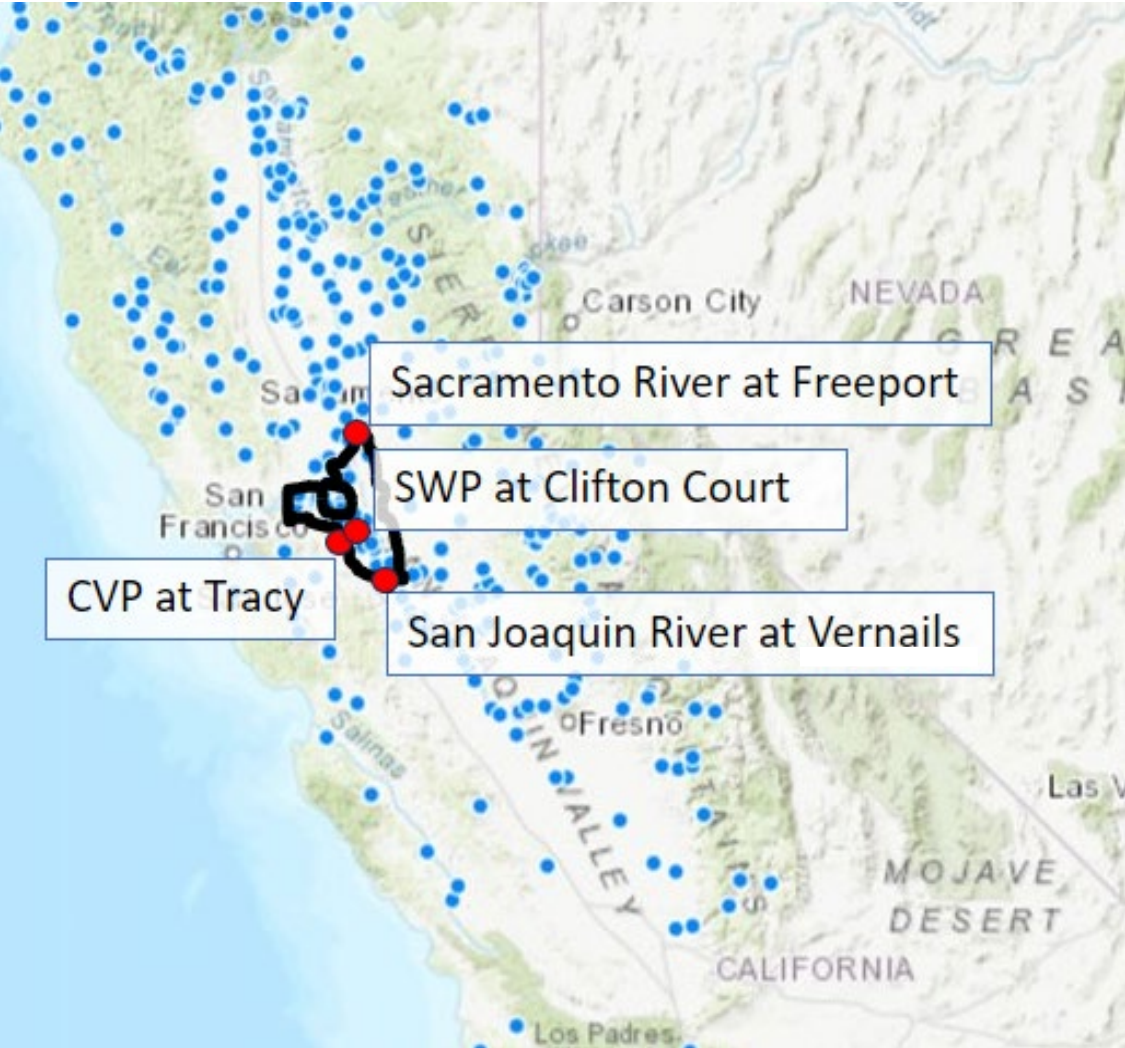
<sup>1</sup> <https://go.usa.gov/xQsUc>  
<sup>2</sup> <https://go.usa.gov/xQsUa>  
<sup>3</sup> <https://go.usa.gov/xURFU>  
<sup>4</sup> <https://go.usa.gov/xQsUr>  
<sup>5</sup> <https://go.usa.gov/xQsU2>  
<sup>6</sup> <https://go.usa.gov/xQsUT>

<50% 50-74.9% 75-90% >90%

10

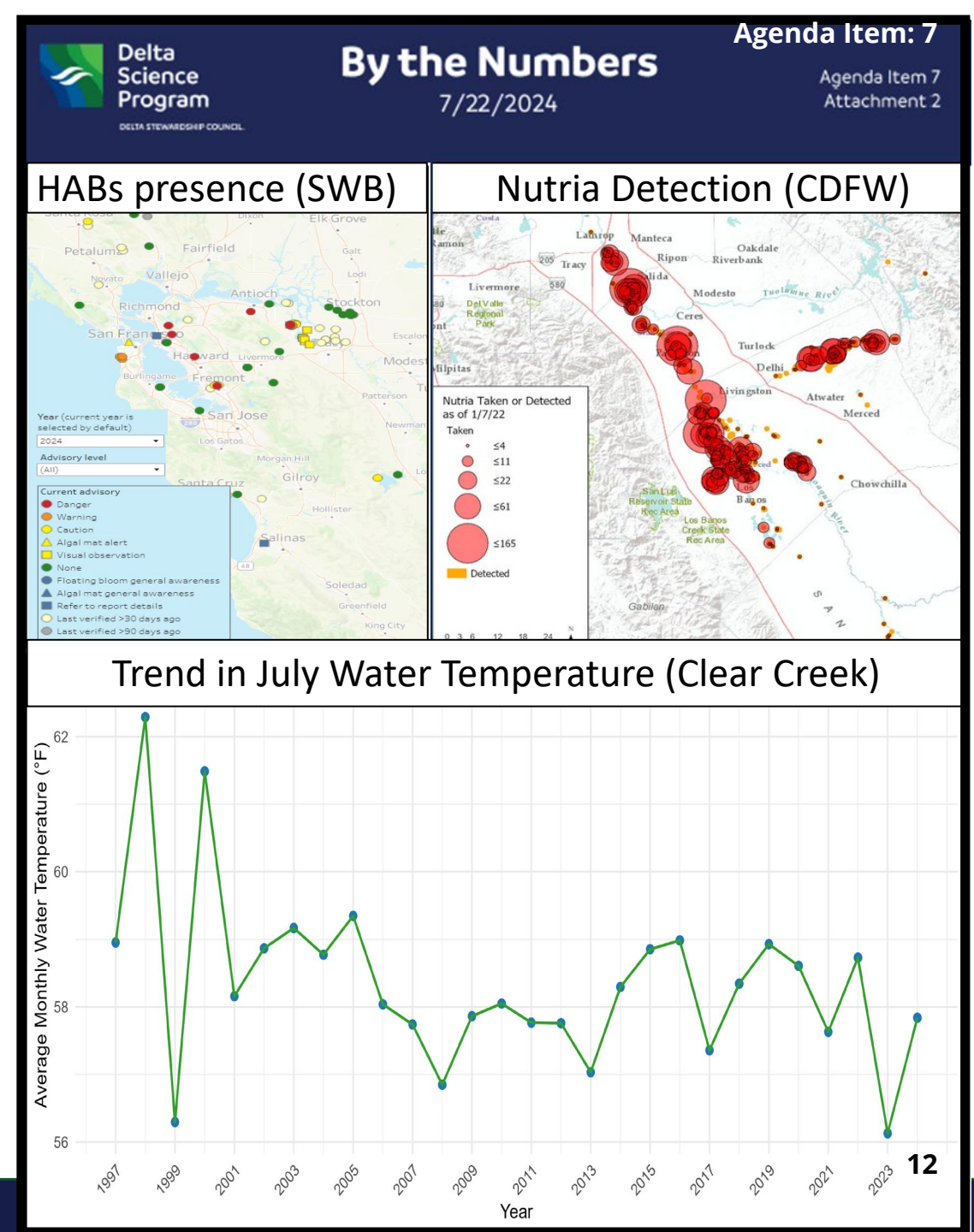


# Water Flow and Quality



# Possible changes/additions to BTN

- Trends in water metrics?
  - Year on year
- Alternate sites or spatial distribution?
- Additional environmental snapshots?
  - Salmon runs / migration
  - Nutria takes
  - Harmful Algal Blooms (HABs) occurrences
  - Invasive aquatic vegetation
  - Allocations





**WHAT WOULD YOU  
LIKE TO SEE REPORTED  
IN 'BY THE NUMBERS?'**



# Thank you

Connect with us



Scan the QR code to  
subscribe to our email  
announcements



[Deltacouncil.ca.gov](http://Deltacouncil.ca.gov)



@DeltaCouncil



@deltastewardshipcouncil



Delta Stewardship Council



@deltastewardshipcouncil