

JUNE 2021

# DELTA ADAPTS: CREATING A CLIMATE RESILIENT FUTURE



**Delta  
Stewardship  
Council**

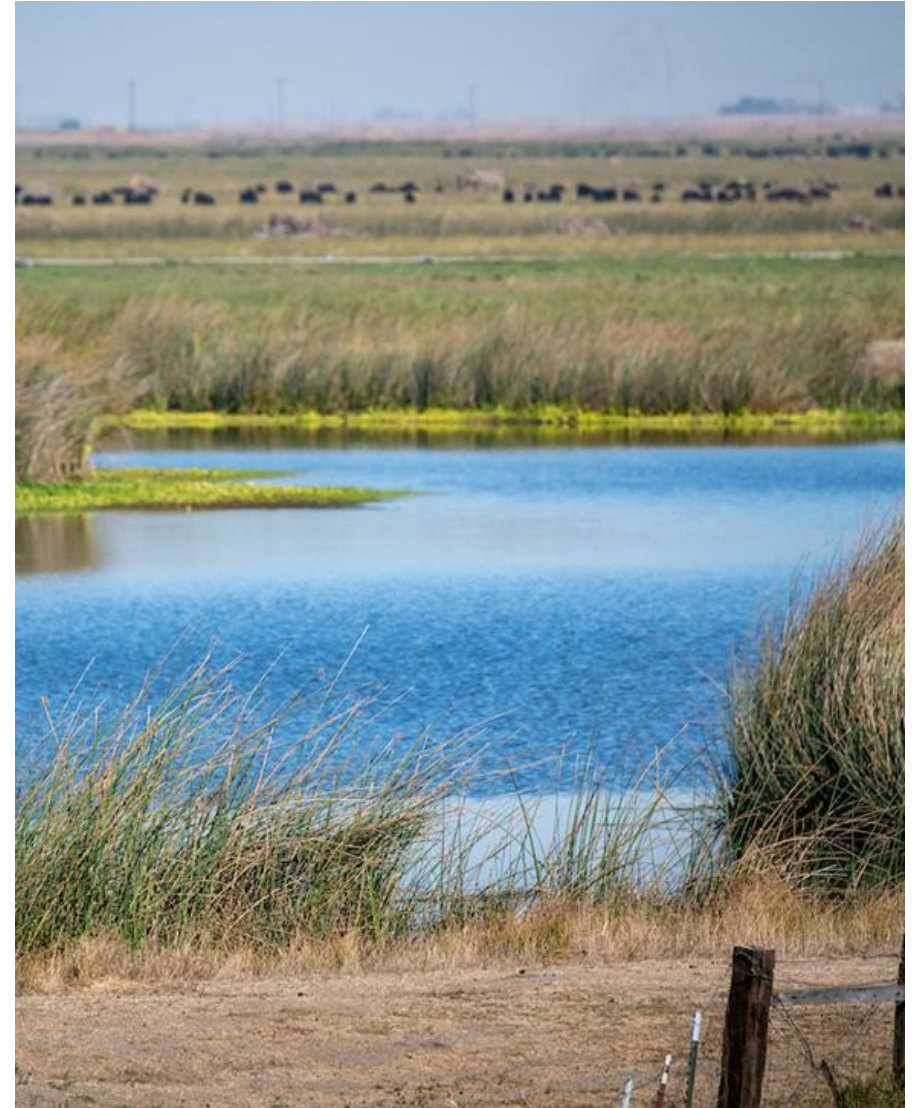
A CALIFORNIA STATE AGENCY

- Overview of Comments Received
- Council Questions & Input
- Public Comment
- Council Action



# Recommendation for Council Action

- Adopt proposed Resolution to find that that the Vulnerability Assessment with attachments are exempt from CEQA
- Approve Vulnerability Assessment with attachments
- Direct Executive Officer, or delegee, to take such steps and actions as appropriate to effect intent of Resolution



# Vulnerability Assessment

- 60-day public comment period ended on March 16, 2021
- 19 comment letters received
  - Individuals
  - State, regional, and local agencies
  - Flood control agencies and reclamation districts
  - Community based and non-profit organizations
  - Private entities



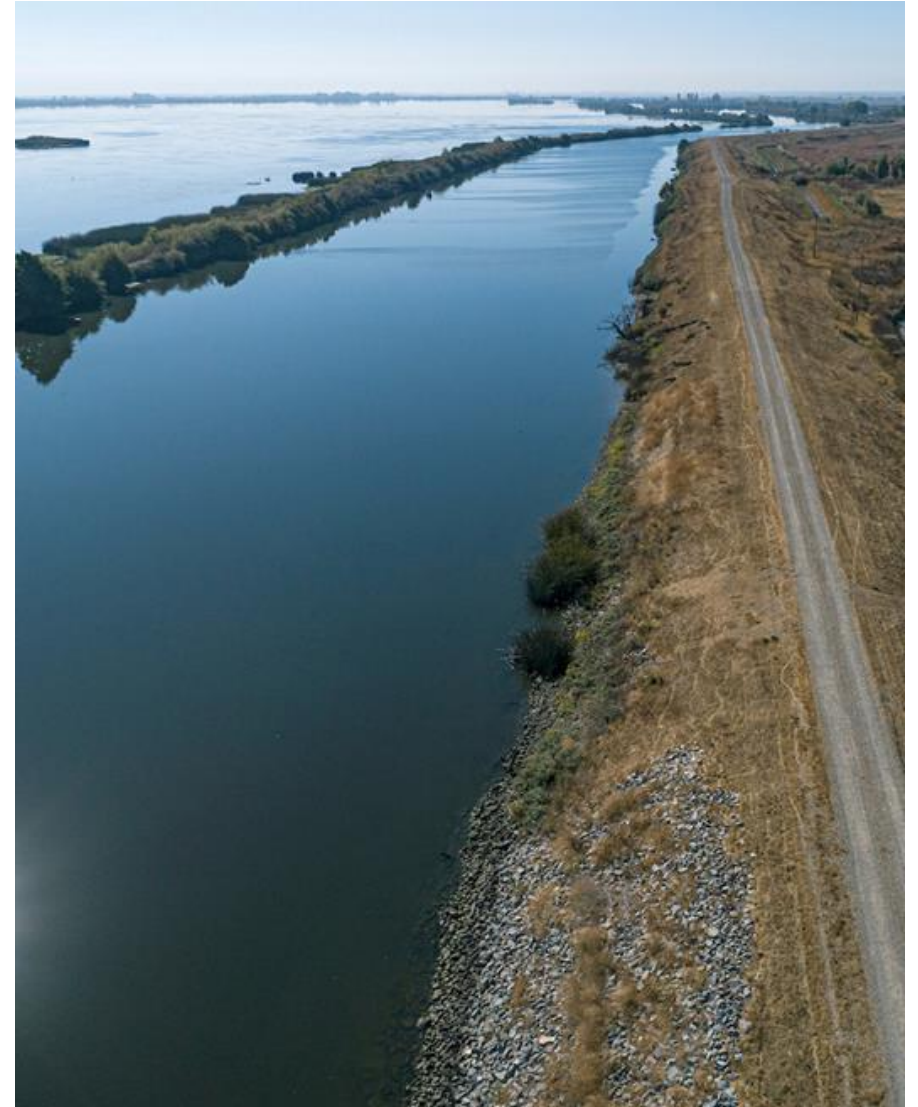
June 2021

## Delta Adapts: Creating a Climate Resilient Future



# Incorporation of Public Comments

- Considered comments
- Made revisions to Vulnerability Assessment
- Not recommending any models to be re-run
  - No significant change is anticipated
  - No alternative data or models were available
  - Revision would require making speculative assumptions
  - Would be addressed in Adaptation Strategy



# Comments Received

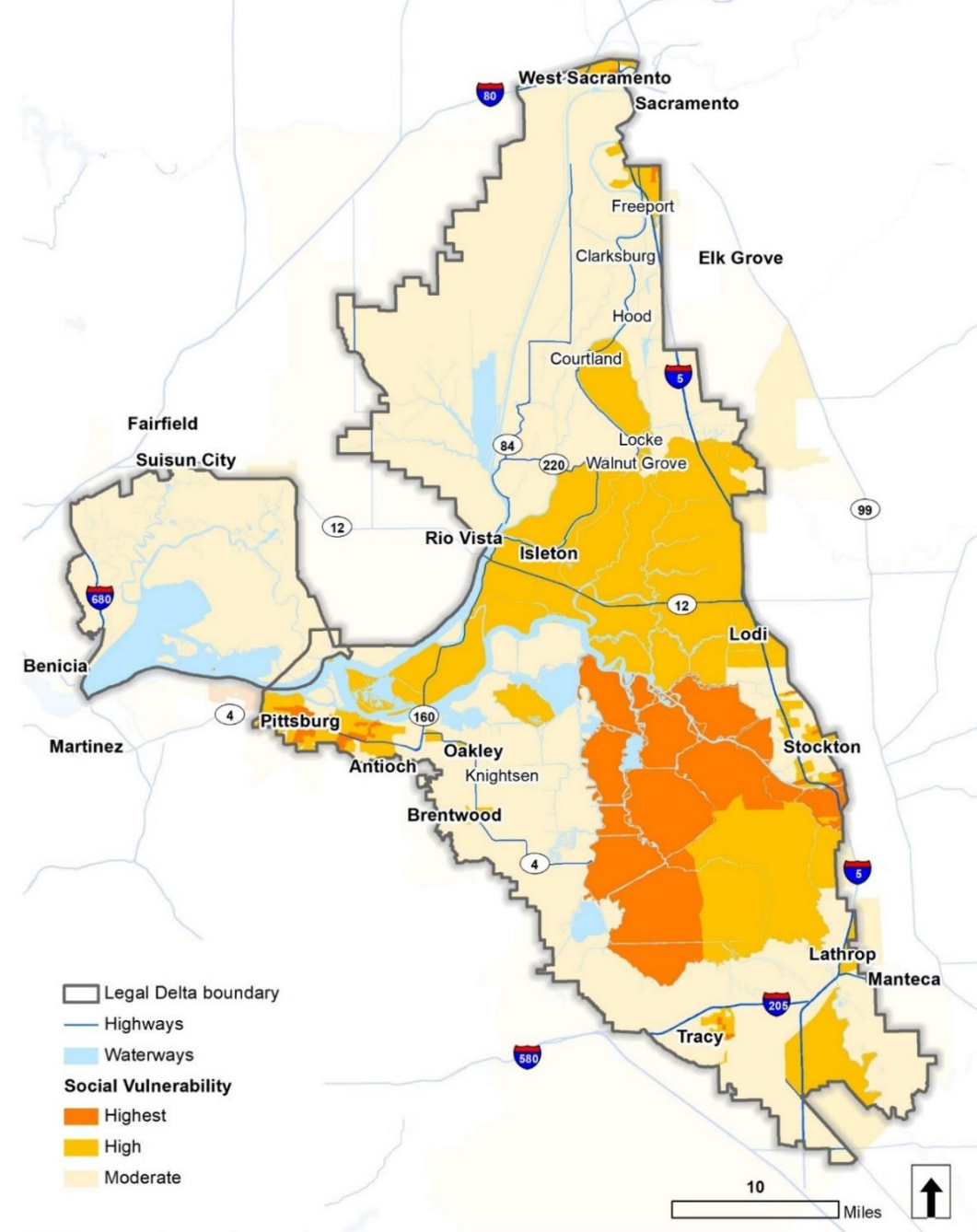
- Flooding
  - Due to other modes of levee failure → Added discussion
  - Consider other regulatory conditions and levee heights → Consider in adaptation
- Ecosystem
  - Consider secondary effects of climate change → Outside of scope of study
  - Consider social and institutional issues → Consider in adaptation
  - Consider impacts to a range of species and ecosystem functions → Outside of scope of study

# Water Supply and Drought

- Include additional metrics → Outside scope of study
- More analysis of impacts on reduced Delta exports on populations outside of Delta served by exports → Added discussion
- Emphasize potential impacts from SLR above 2' → Model constraints
- Consider water quality impacts → Outside scope of study

# Equity Analysis

- Expand coverage of social vulnerability index → **Consider in adaptation**
- Identify most socially vulnerable neighborhoods → **Clarified discussion**
- Did not adequately assess vulnerability of small, rural communities → **Added discussion**
- Include more detailed analysis of farm workers and students → **Consider in adaptation**
- Acknowledge Delta exports serve DACs outside of Delta → **Added discussion**





## CEQA Exemption

- Class 6 Categorical Exemption – Information Collection (*14 CCR section 15306*) (*State CEQA Guidelines*)
- Statutory Exemption – Feasibility and Planning Studies (*Public Resources Code section 21102; 14 CCR section 15262*) (*State CEQA Guidelines*)
- Common Sense Exemption (*14 CCR section 15061(b)(3)*) (*State CEQA Guidelines*)

## Next Steps

- Preparing detailed work plan on Adaptation Strategy
- Begin outreach efforts this summer



Questions?

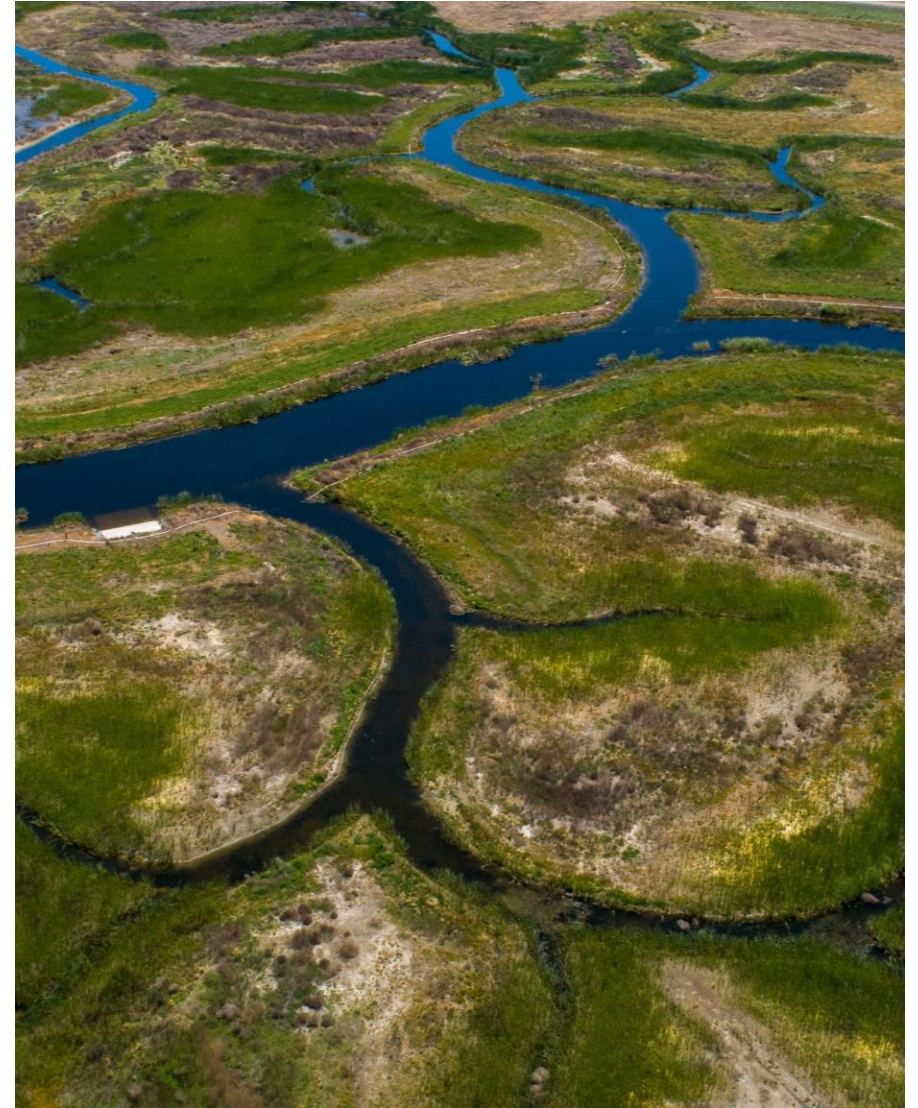


# PUBLIC COMMENT ON VULNERABILITY ASSESSMENT



# Recommendation for Council Action

- Adopt proposed Resolution to find that that the Vulnerability Assessment with attachments are exempt from CEQA
- Approve Vulnerability Assessment with attachments
- Direct Executive Officer, or delegee, to take such steps and actions as appropriate to effect intent of Resolution



# Connect with us

We want to hear from you!



Assistant Planning Director

**Harriet Ross**

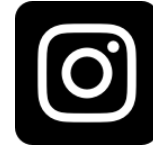
Harriet.Ross@deltacouncil.ca.gov



[bit.ly/DeltaAdapts](https://bit.ly/DeltaAdapts)



@deltastewardshipcouncil



@deltacouncil



@deltastewardshipcouncil



Delta Stewardship Council

A large concrete bridge with multiple pillars spans across a wide body of water. The sky is filled with heavy, grey clouds, and the water reflects the overcast light. In the foreground, there is a patch of dry, brown grass. The text "THANK YOU" is centered in a large, white, sans-serif font.

THANK YOU